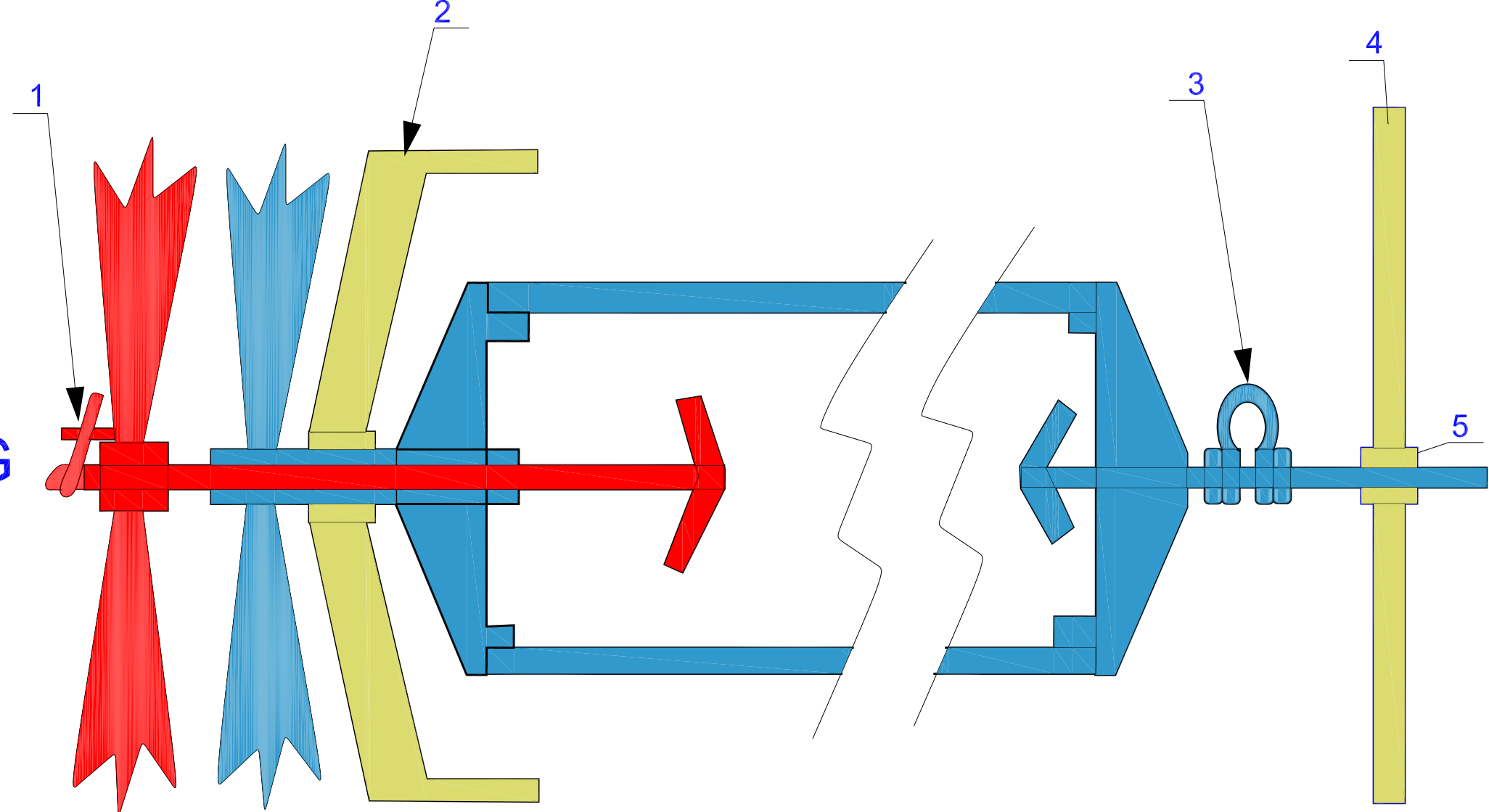


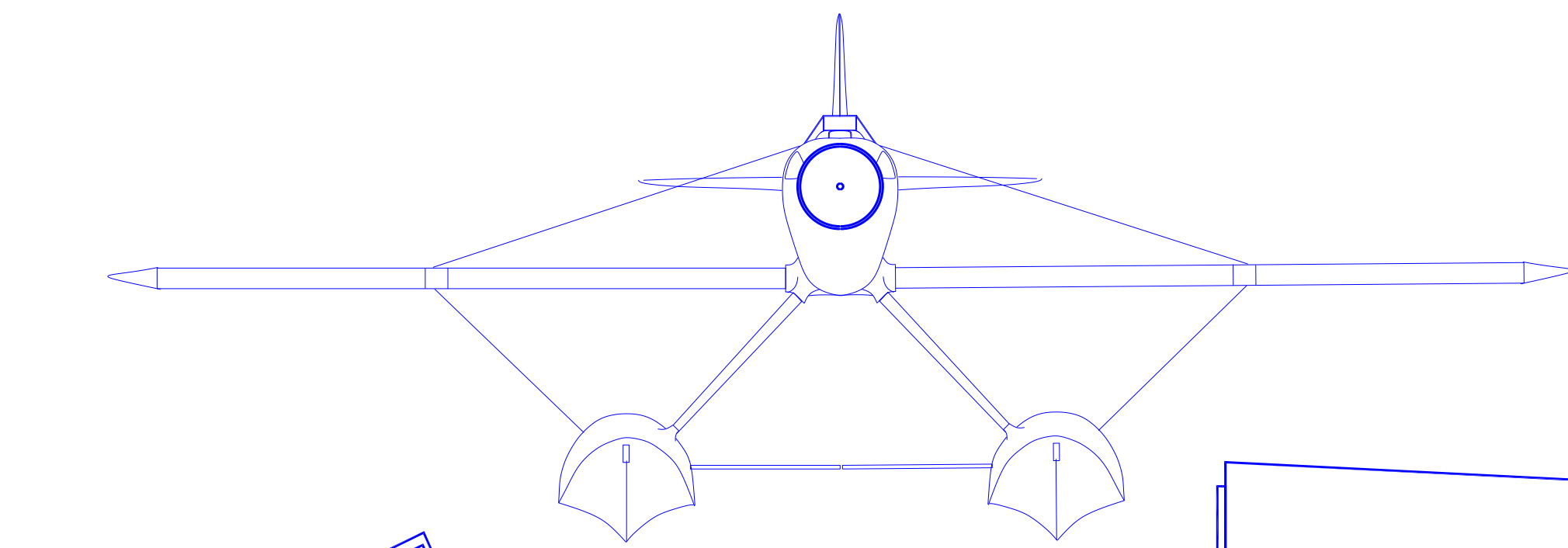
# Macchi Castoldi MC-72

DRAWN BY TOM AKERY 4 NOV 2016 MODIFIED FOR RUBBER POWER FREE FLIGHT 27" SPAN  
 CONTRA - ROTATING PROP ARRANGEMENT TAKEN FROM MB-5 BUILD ON HPA SITE  
 FROM ITALIAN PLAN FOUND ON THE NET FOR IC RC MODEL APPROXIMATELY 40" SPAN  
 - DESIGNER UNKNOWN

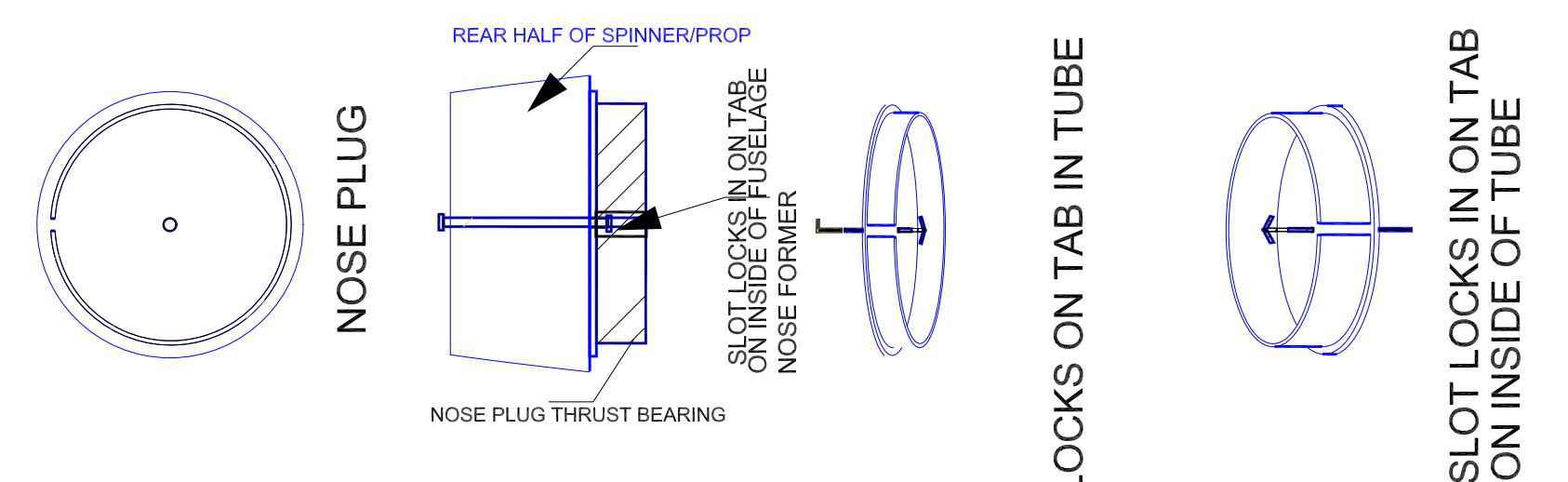
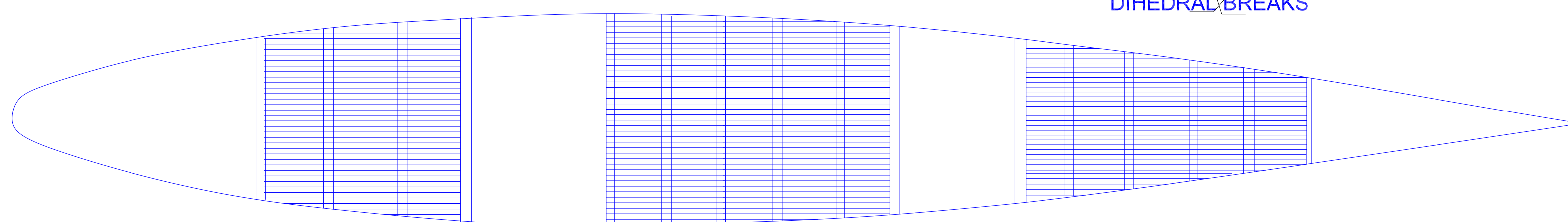
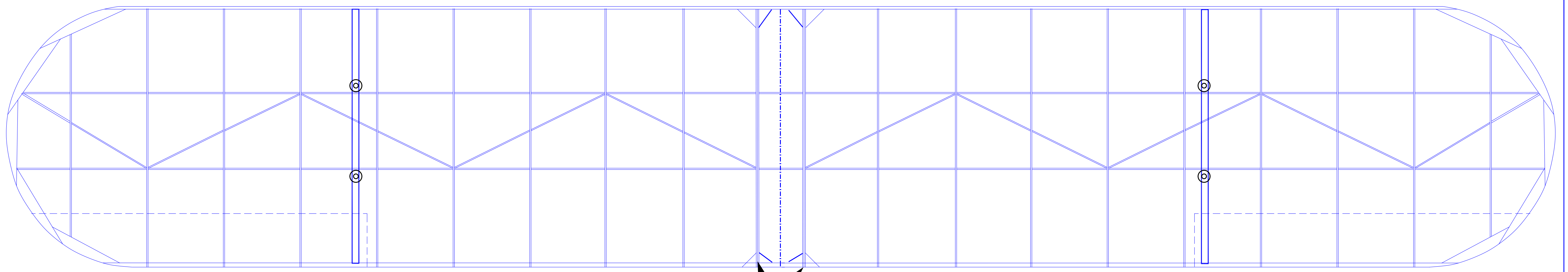
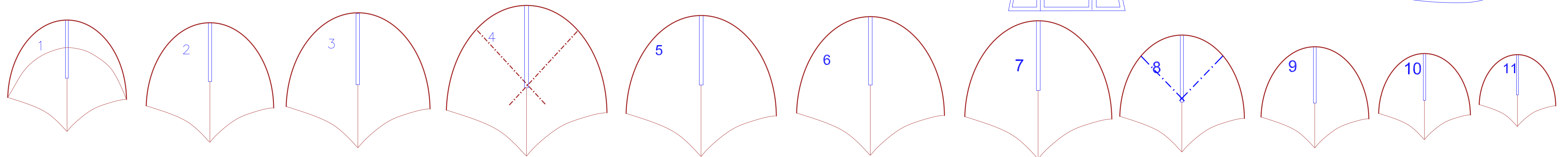
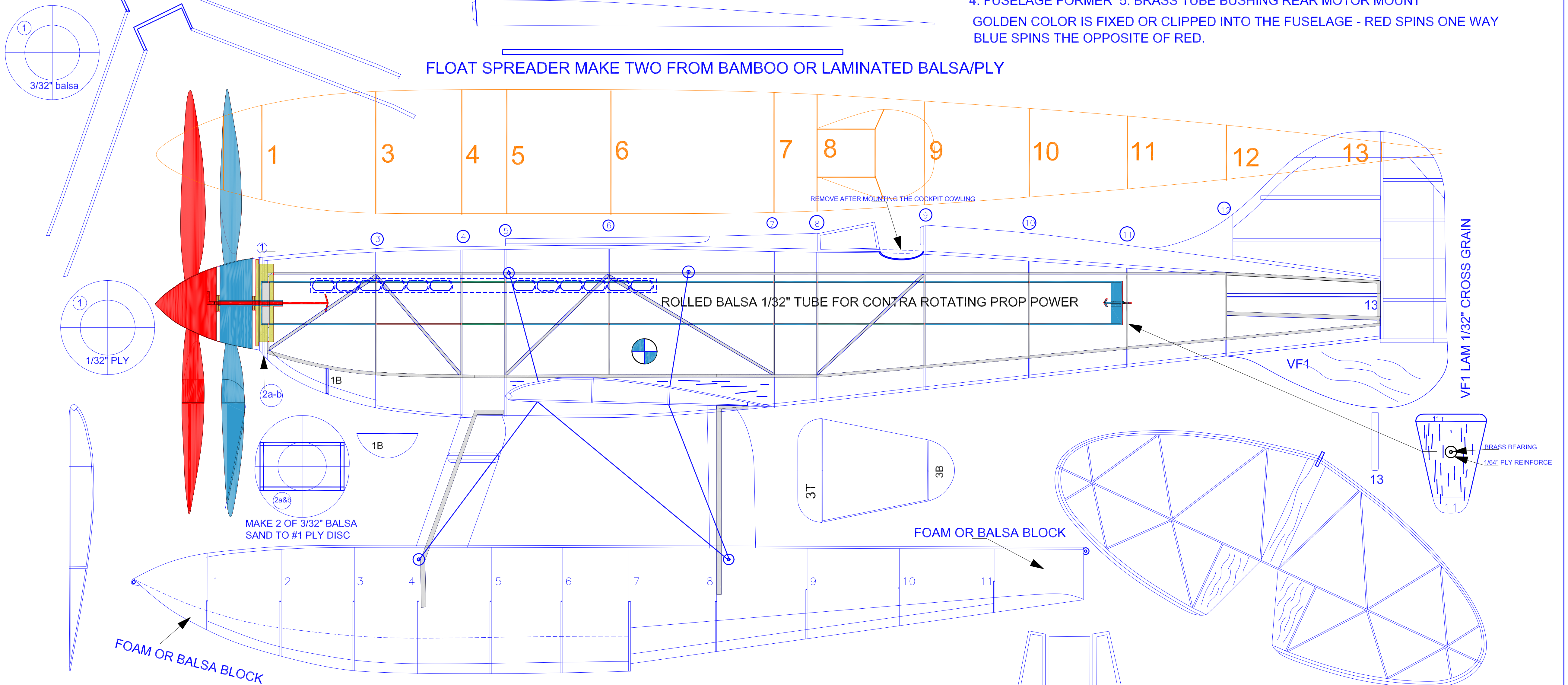
## CONTRA-ROTATING PROPELLER DRIVE



1. FREE WHEEL DEVICE
  2. NOSEBLOCK PROP BEARING
  3. MOTOR ANCHOR HOOP
  4. FUSELAGE FORMER
  5. BRASS TUBE BUSHING REAR MOTOR MOUNT
- GOLDEN COLOR IS FIXED OR CLIPPED INTO THE FUSELAGE - RED SPINS ONE WAY  
 BLUE SPINS THE OPPOSITE OF RED.



FLOAT SPREADER MAKE TWO FROM BAMBOO OR LAMINATED Balsa/PLY

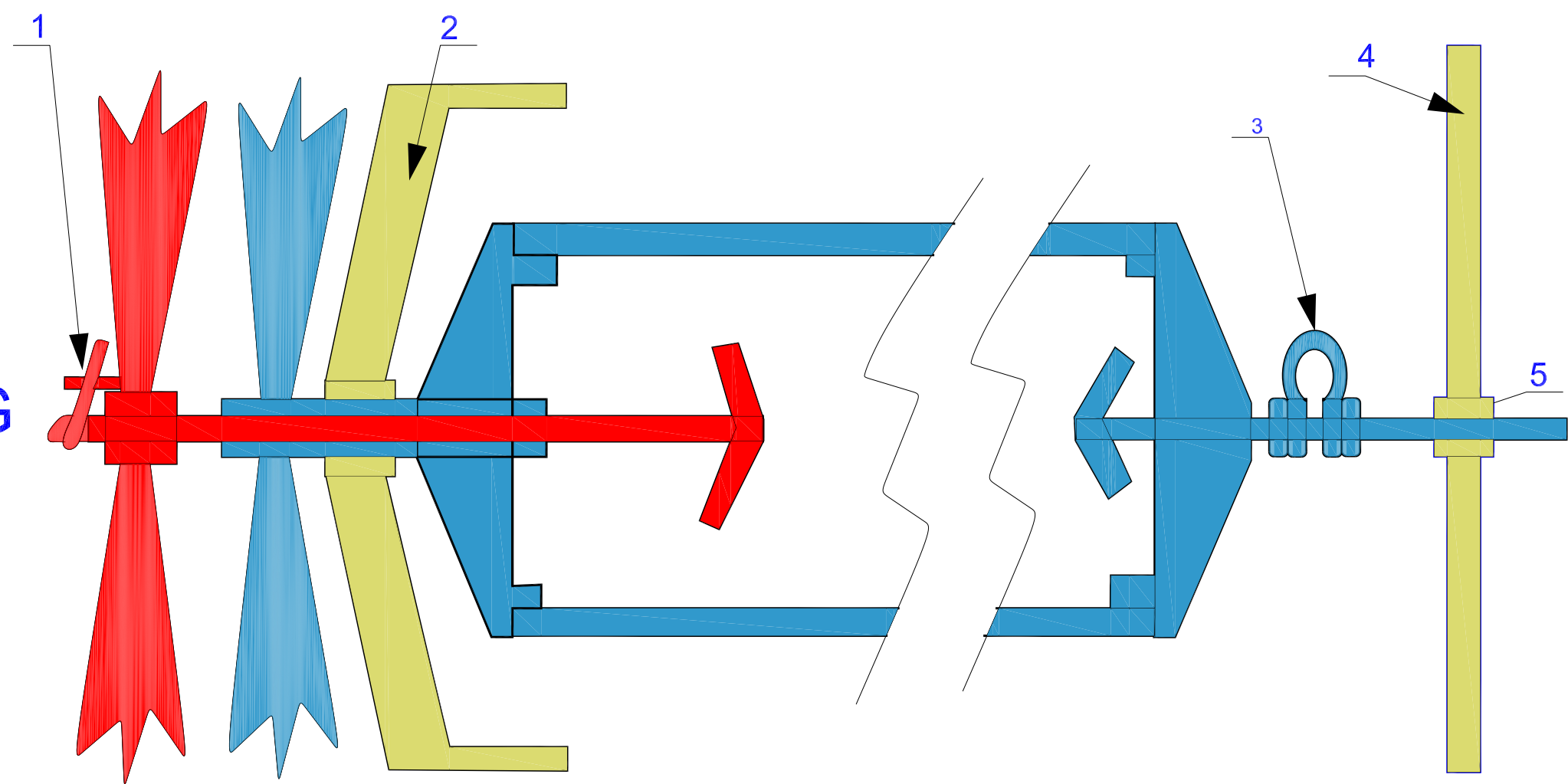




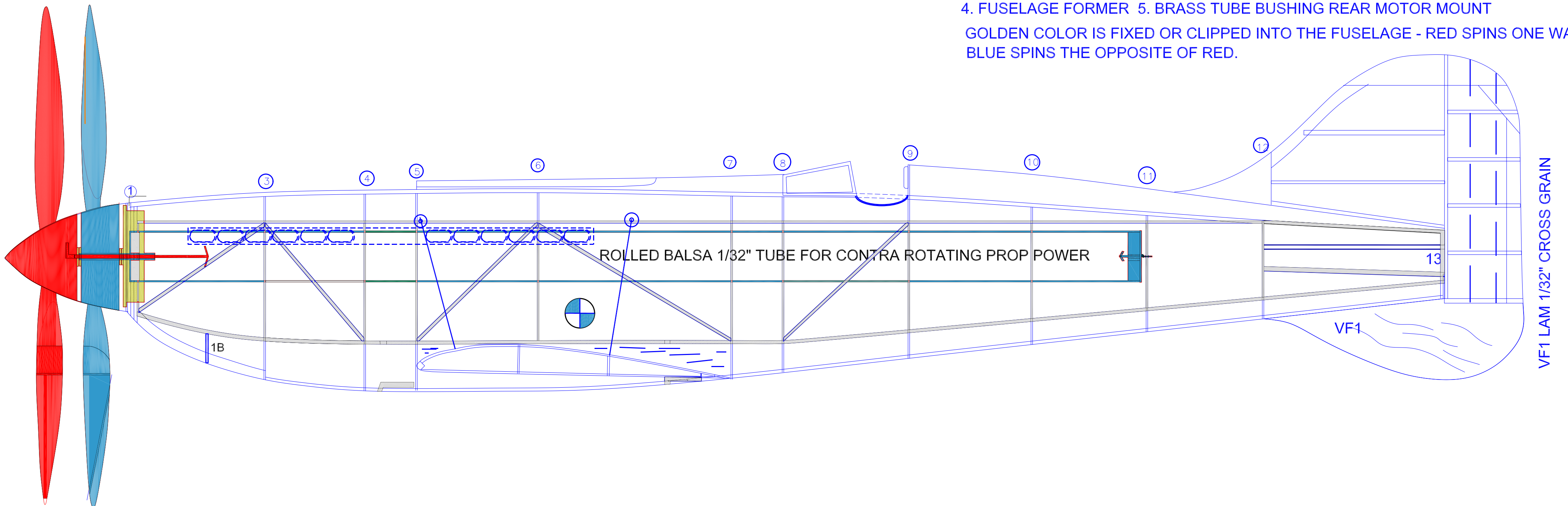
## CONTRA-ROTATING PROPELLER DRIVE

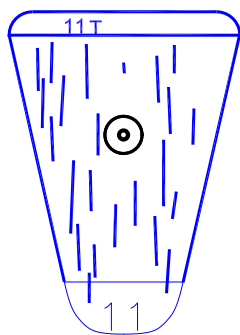
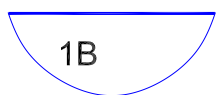
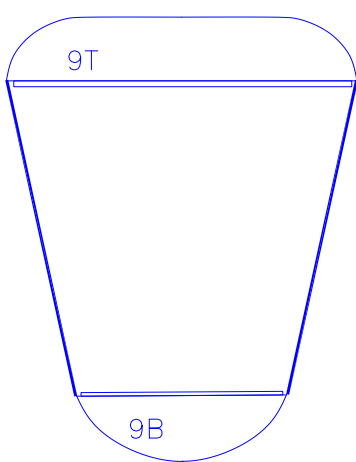
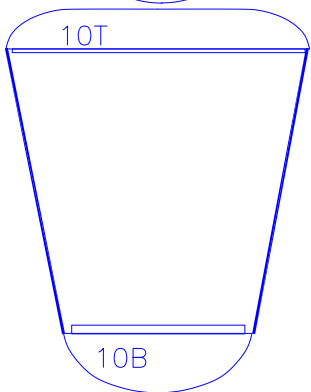
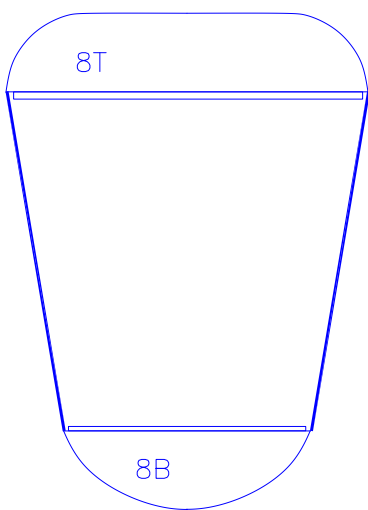
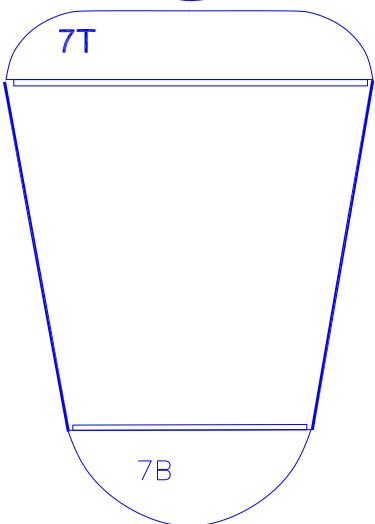
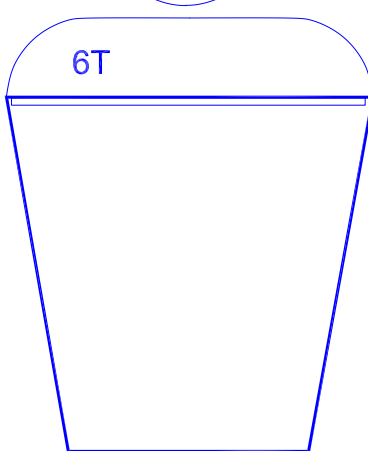
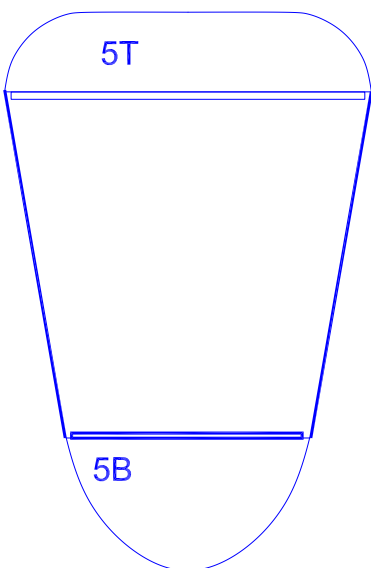
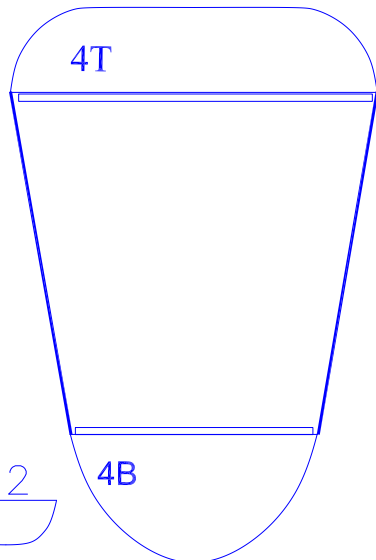
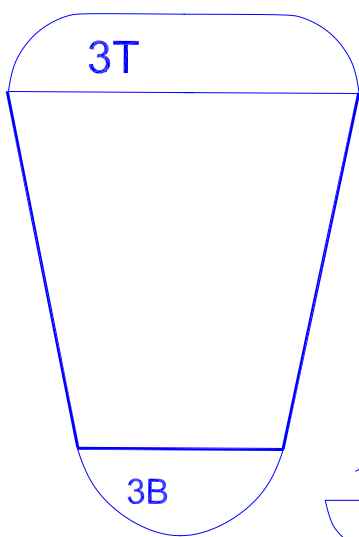
# Contra-Rotating Propellers

DRAWN BY TOM AKERY 4 NOV 2016 MODIFIED FOR RUBBER POWER FREE FLIGHT 27" SPAN  
 CONTRA - ROTATING PROP ARRANGEMENT TAKEN FROM MB-5 BUILD ON HPA SITE  
 FROM ITALIAN PLAN FOUND ON THE NET FOR IC RC MODEL APPROXIMATELY 40" SPAN  
 - DESIGNER UNKNOWN



- 1. FREE WHEEL DEVICE
  - 2. NOSEBLOCK PROP BEARING
  - 3. MOTOR ANCHOR HOOP
  - 4. FUSELAGE FORMER
  - 5. BRASS TUBE BUSHING REAR MOTOR MOUNT
- GOLDEN COLOR IS FIXED OR CLIPPED INTO THE FUSELAGE - RED SPINS ONE WAY  
 BLUE SPINS THE OPPOSITE OF RED.



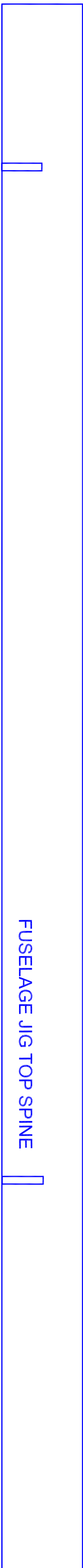


4

FUSELAGE JIG BOTTOM SPINE MAKE  
FROM FOAM BOARD

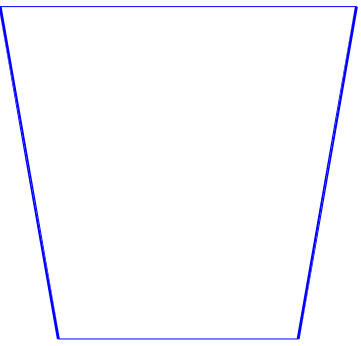
8

11



FUSELAGE JIG TOP SPINE

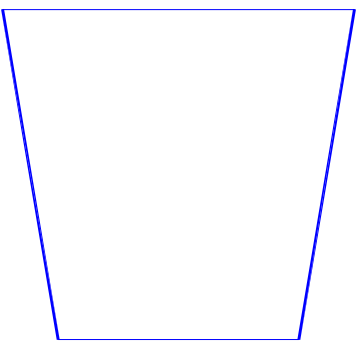
4T



FUSELAGE JIG



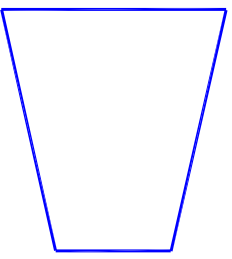
8



FUSELAGE JIG



11



FUSELAGE JIG

