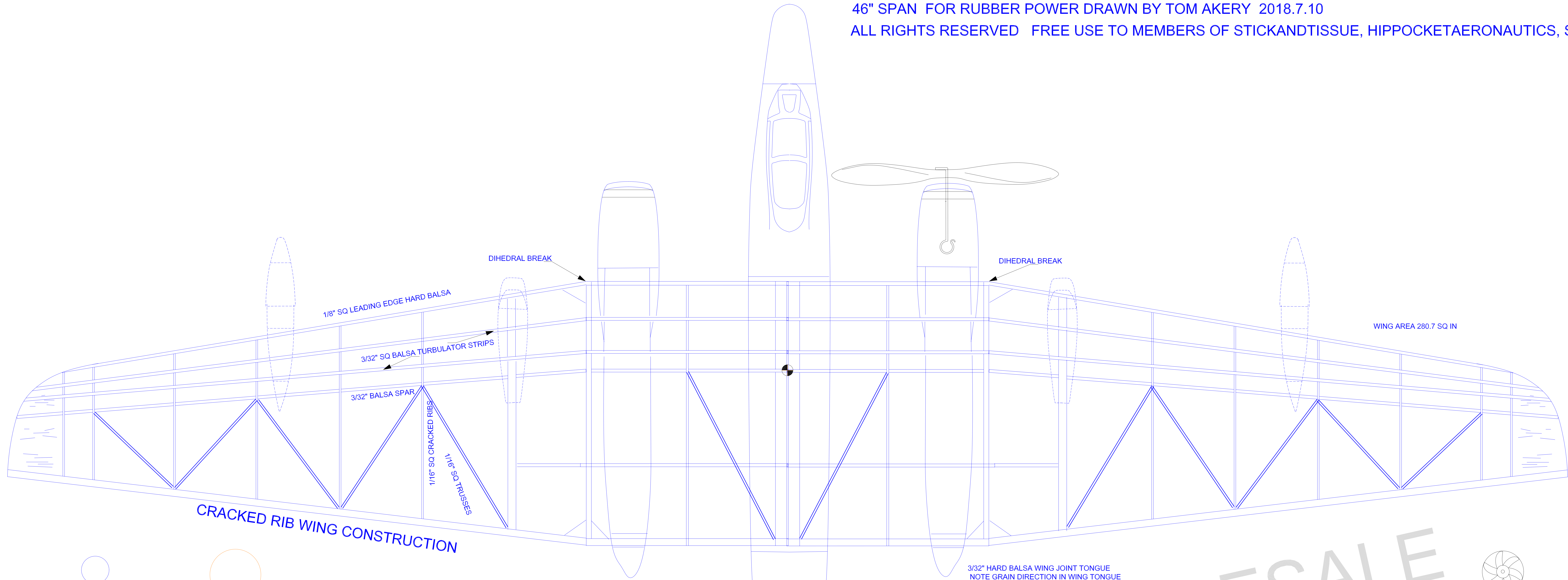


# MARTIN WB-57F CANBERRA

46" SPAN FOR RUBBER POWER DRAWN BY TOM AKERY 2018.7.10

ALL RIGHTS RESERVED FREE USE TO MEMBERS OF STICKANDTISSUE, HIPPOCKETAERONAUTICS, SMALLFLYING ARTS

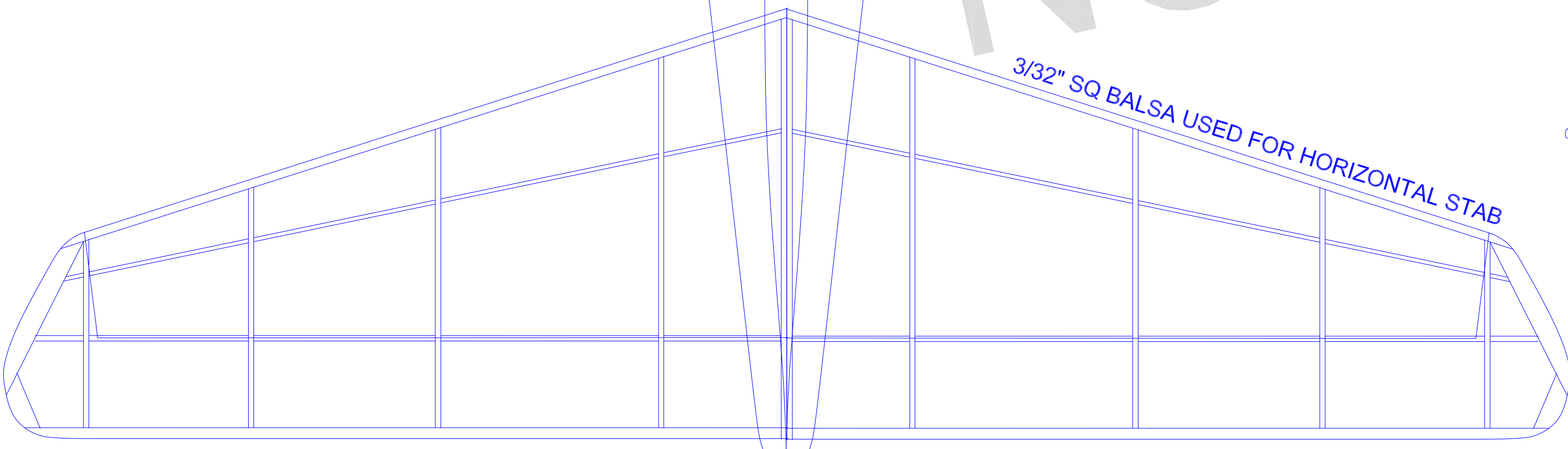
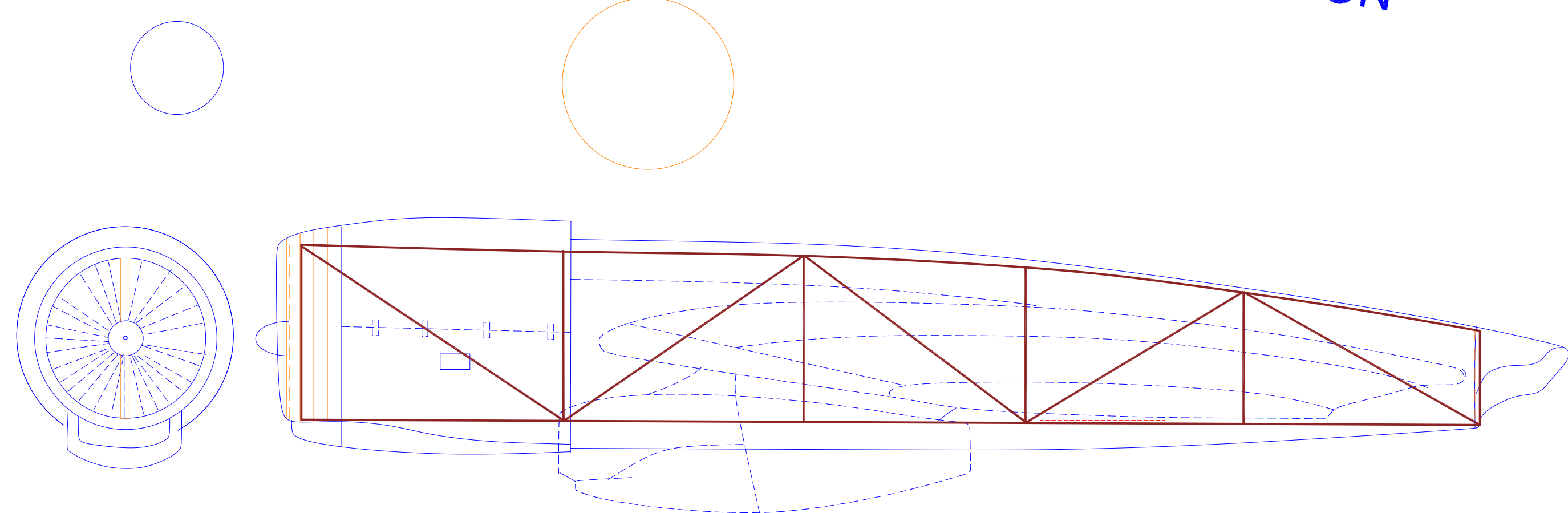


WING AREA 280.7 SQ IN

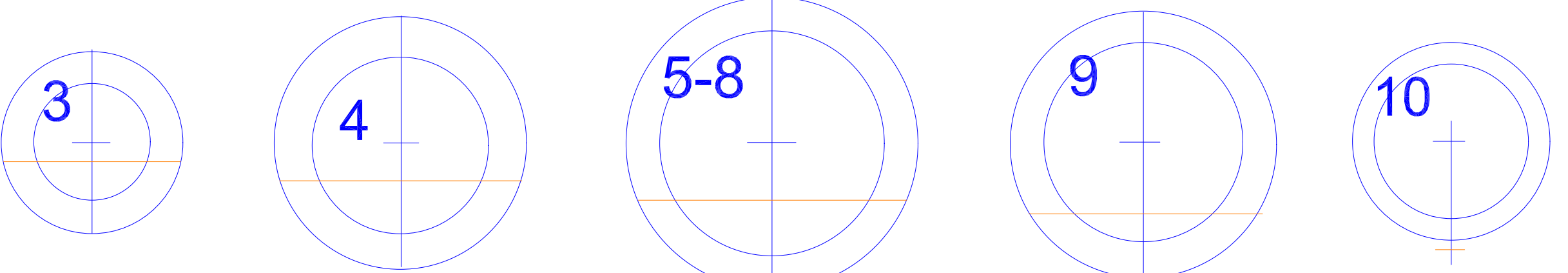
CRACKED RIB WING CONSTRUCTION

3/32" HARD BALSA WING JOINT TONGUE  
NOTE GRAIN DIRECTION IN WING TONGUE

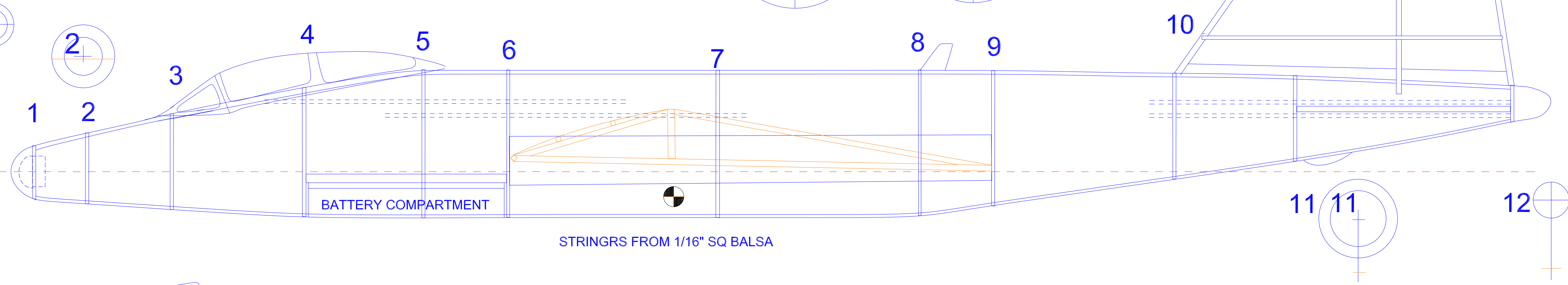
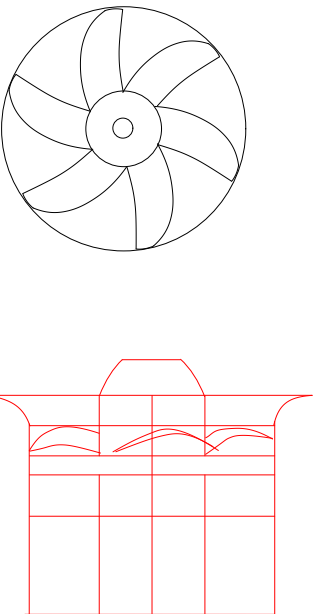
NOT FOR RESALE



BUILD STAB ADD 3/32" SQ ON TOP OR RIBS SAND TO AIRFOIL



VERTICAL STAB SPAR 1/16" BALS



STAB DIHEDRAL UNDER EACH TIP

WING DIHEDRAL AT TIP  
55/64 in

