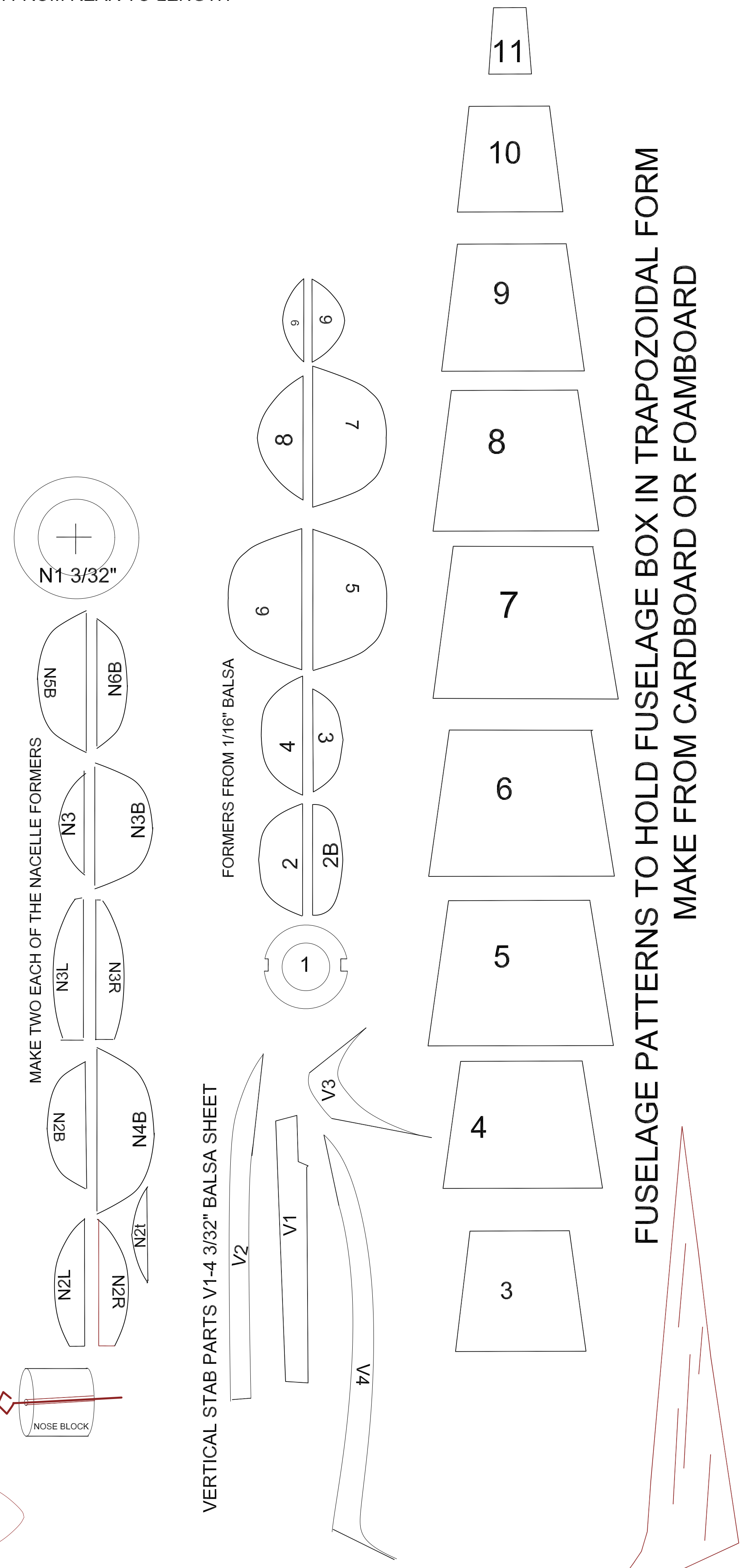
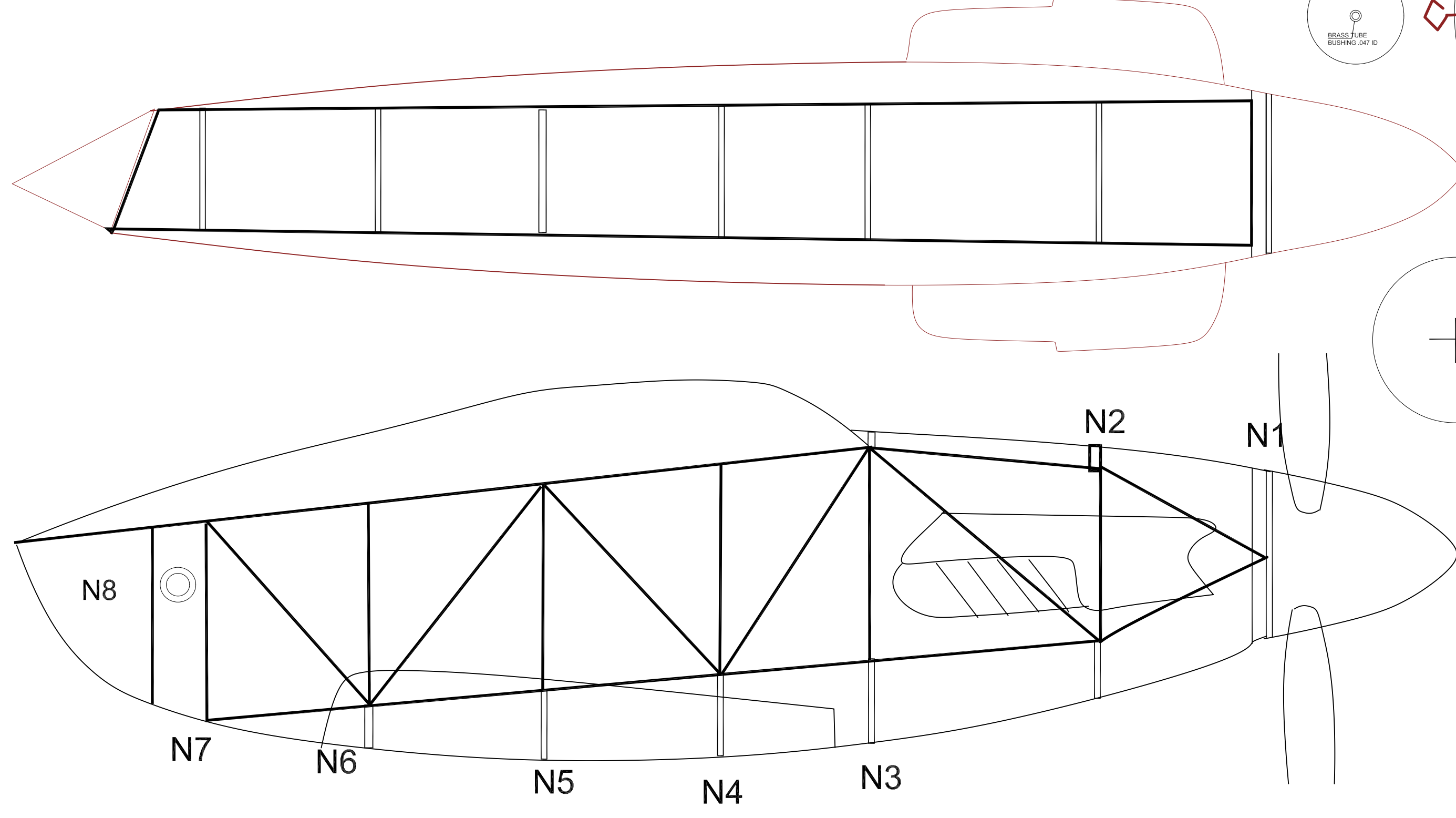
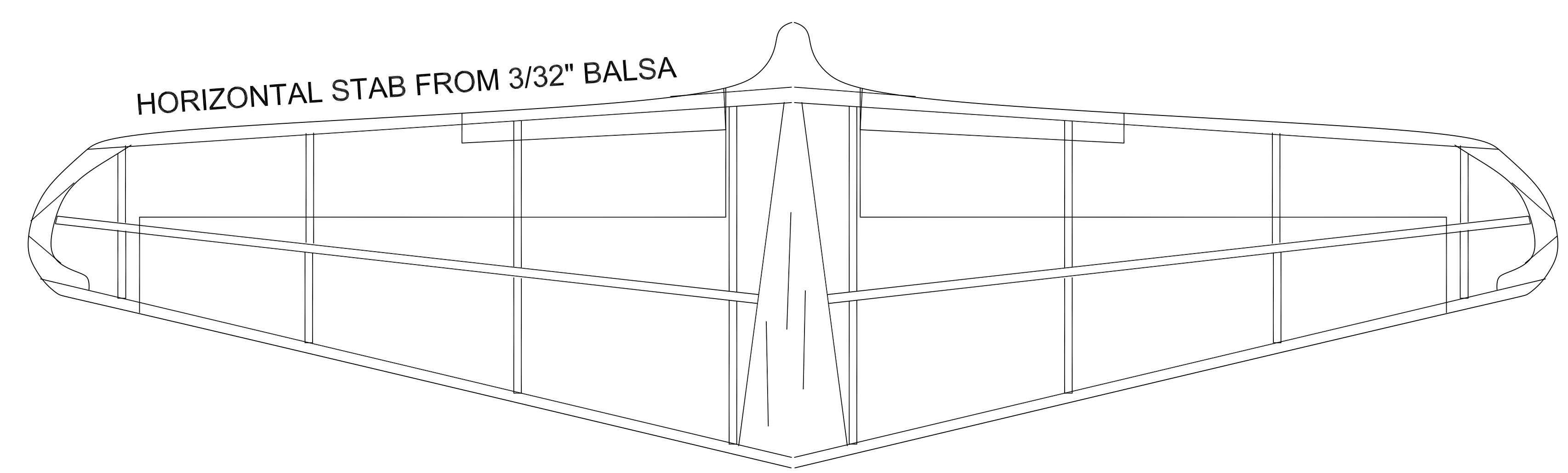
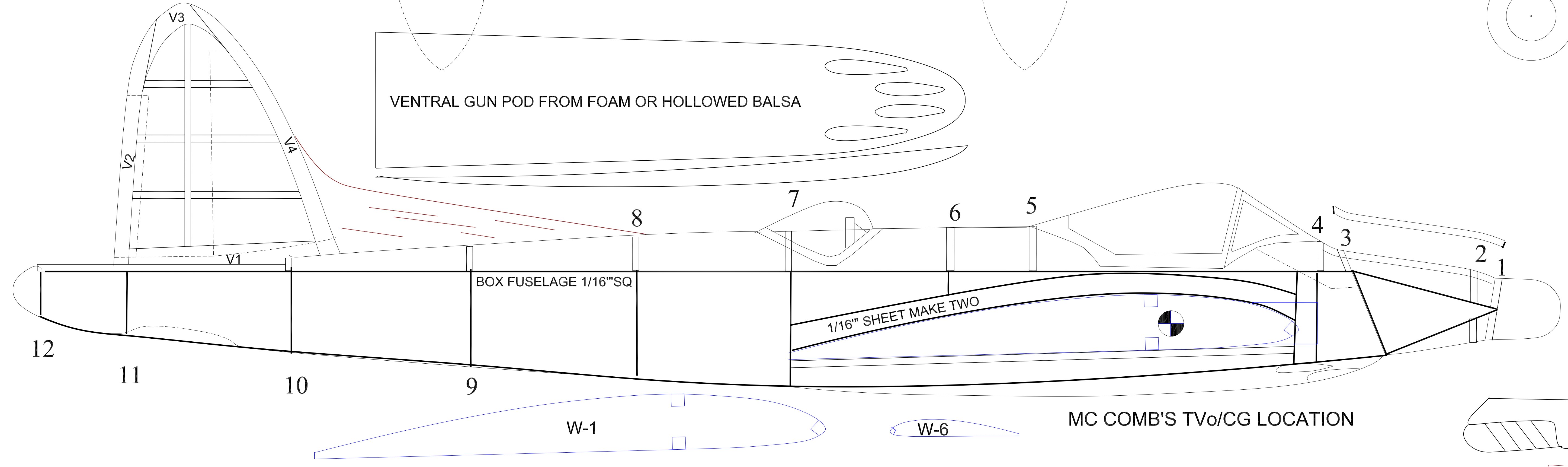
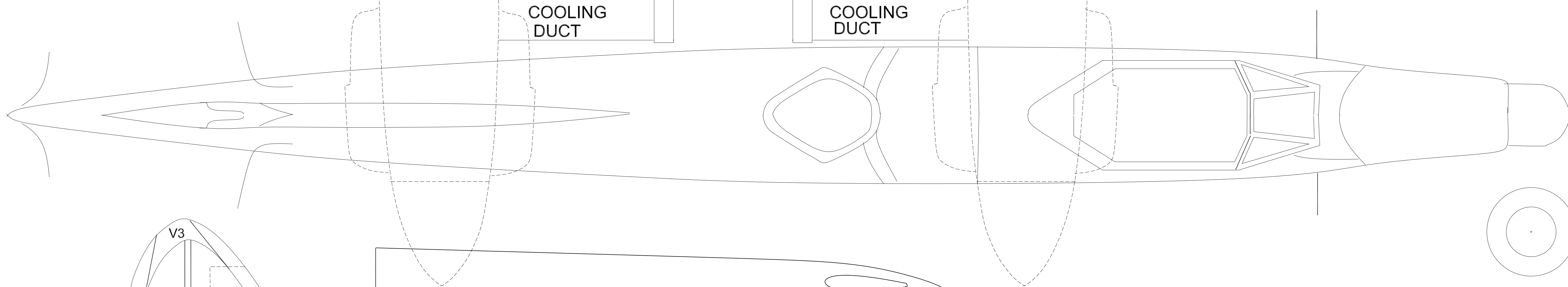
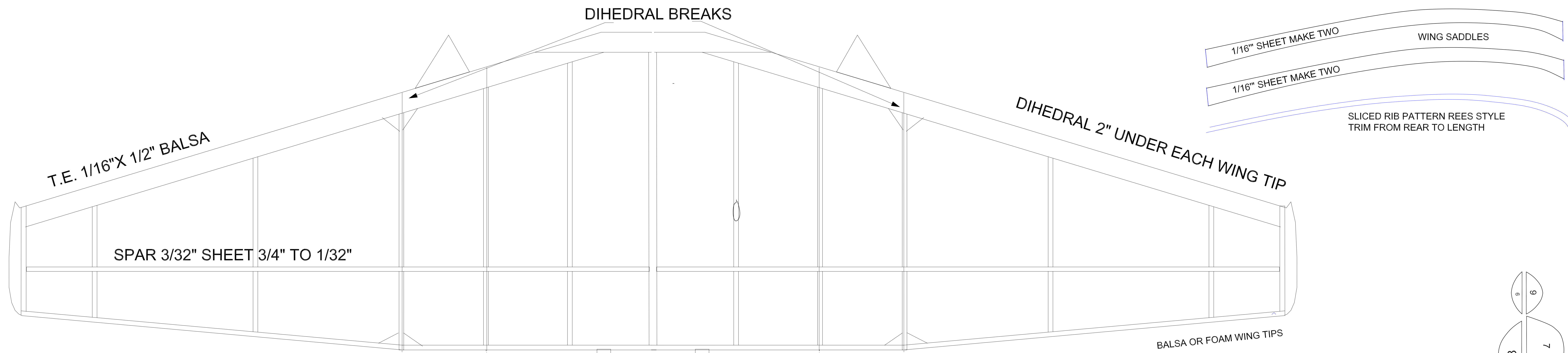


DE HAVILLAND DH-103 SEA HORNET NF-MK21

JUMBO SCALE TWIN RUBBER POWERED 37"

DRAWN BY TOM AKERY 1 NOV 22



FUSELAGE PATTERNS TO HOLD FUSELAGE BOX IN TRAPEZOIDAL FORM
MAKE FROM CARDBOARD OR FOAMBOARD