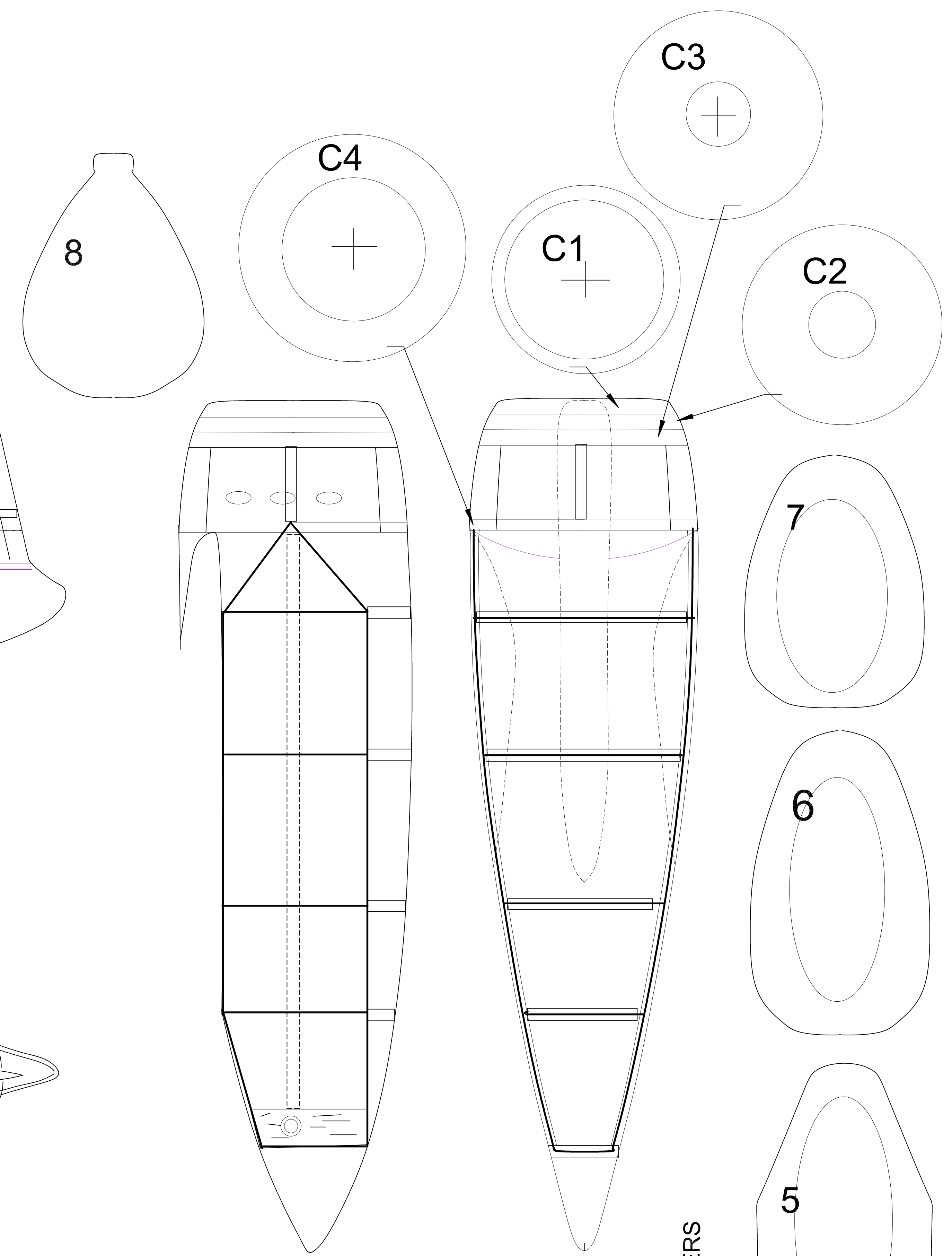
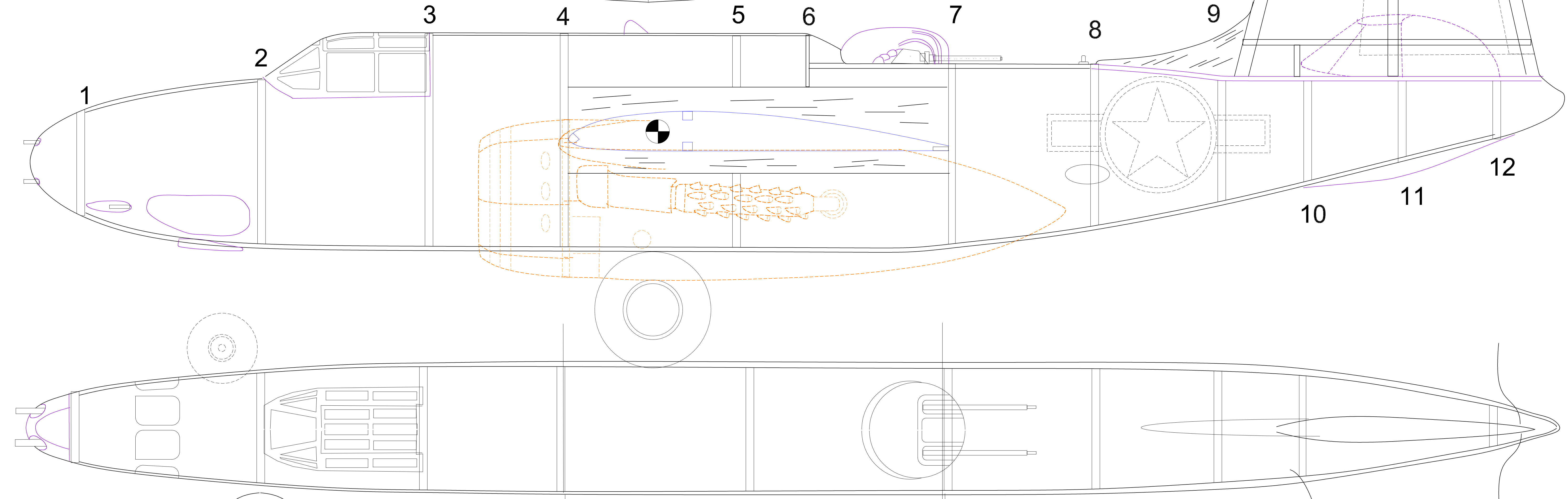
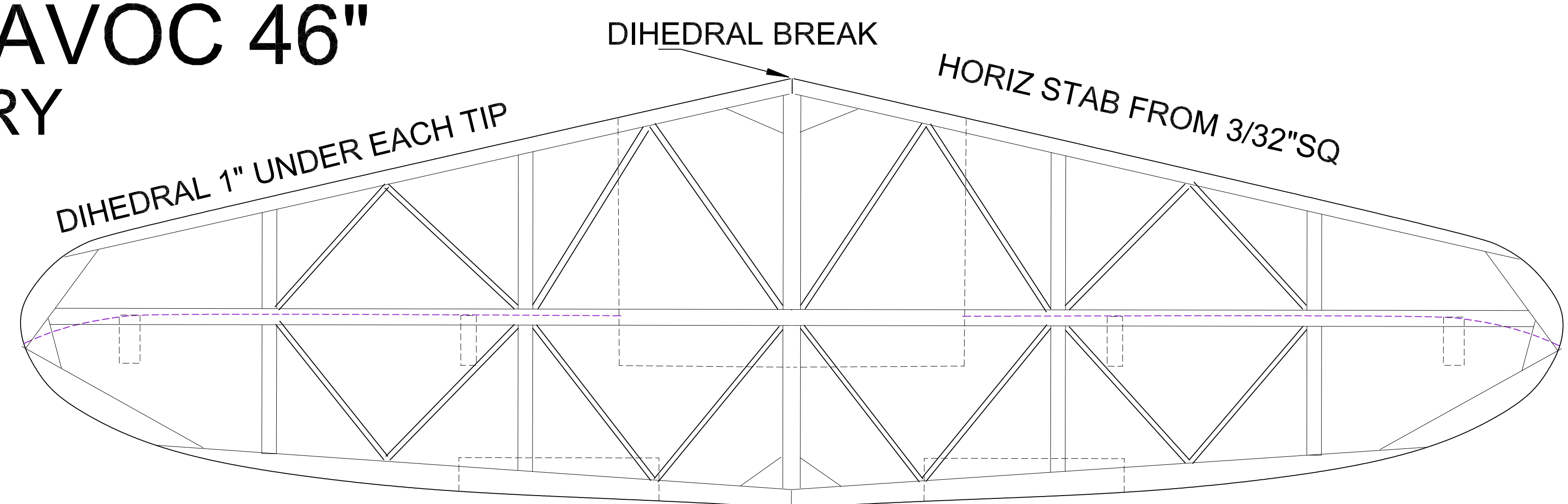


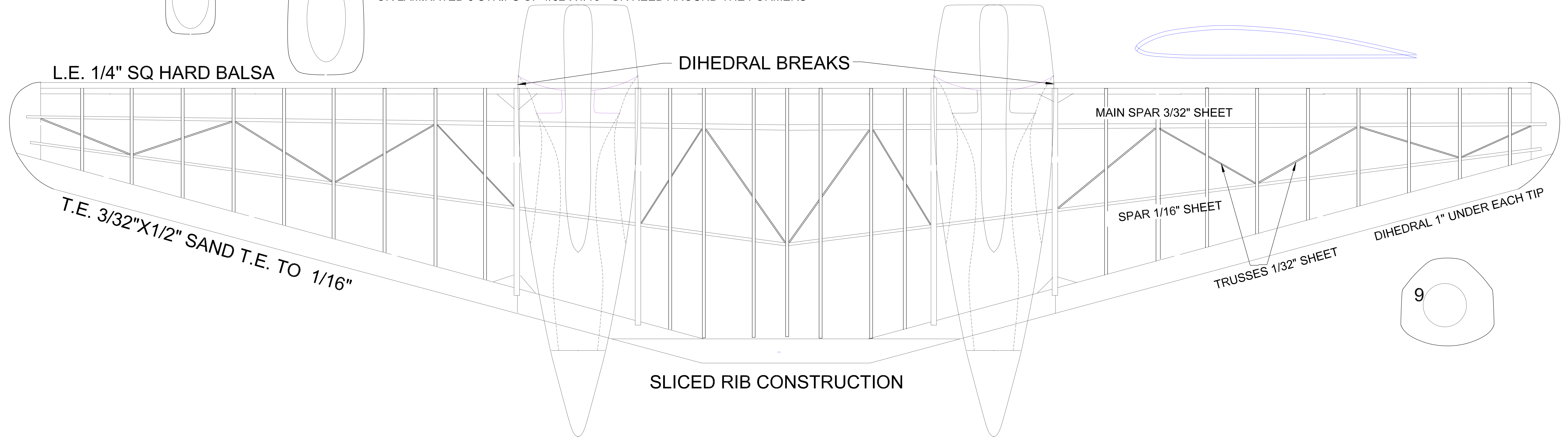
# DOUGLAS A-20 HAVOC 46"

DRAWN BY TOM AKERY

FROM 3VUE ON INTERNET  
30 APR 24



FUSELAGE FORMERS MAY BE MADE FROM 1/16" SHEET OR LAMINATED 3 STRIPS OF 1/32"X1/16" OR REED AROUND THE FORMERS



SLICED RIB CONSTRUCTION

FUSELAGE FORMERS MAY BE MADE FROM 1/16" SHEET OR LAMINATED 3 STRIPS OF 1/32"X1/16" OR REED AROUND THE FORMERS

