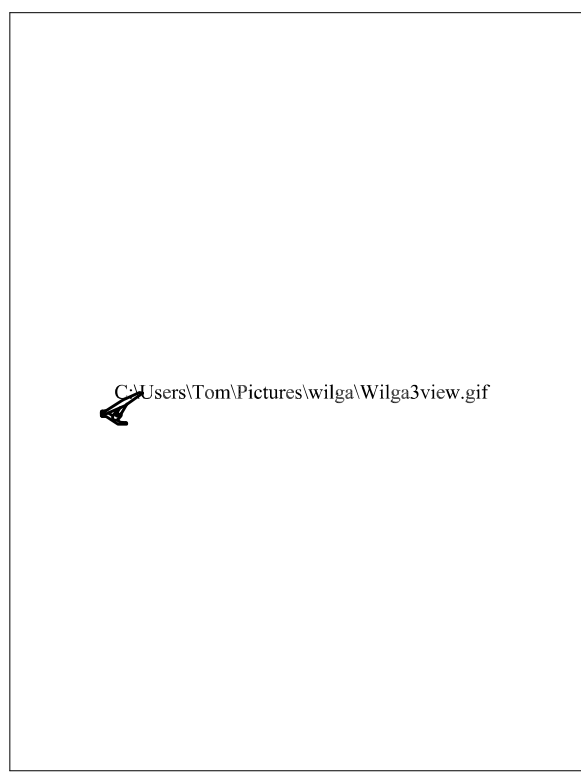
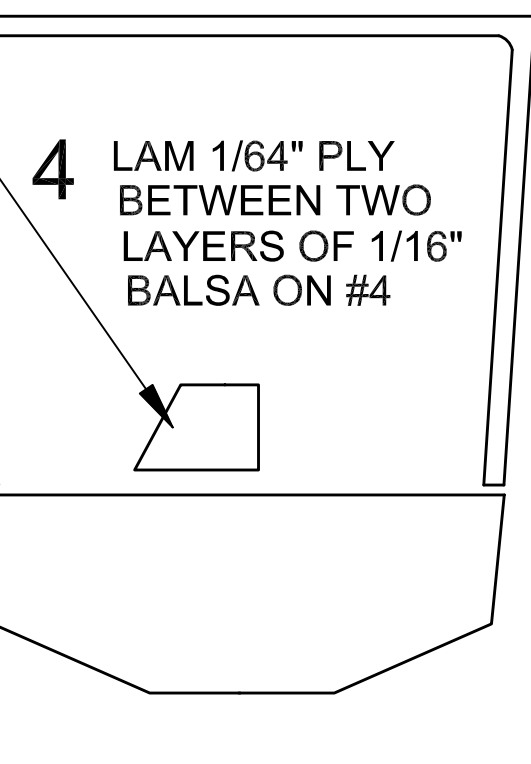
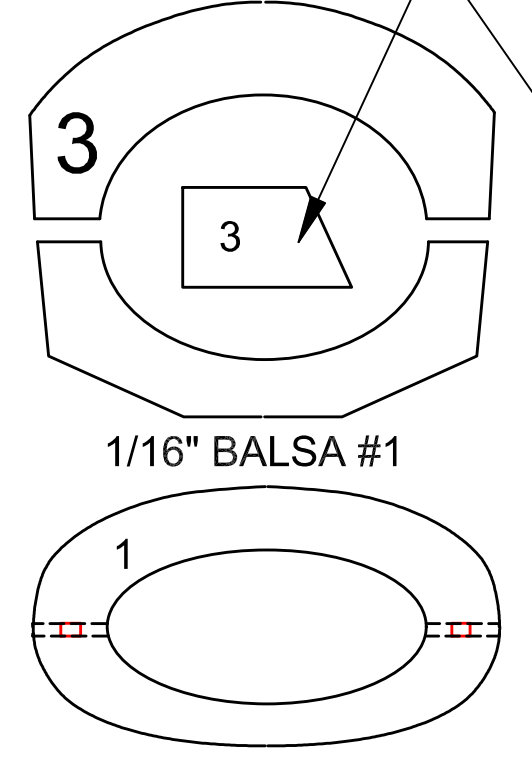


PZL 104 "WILGA C"

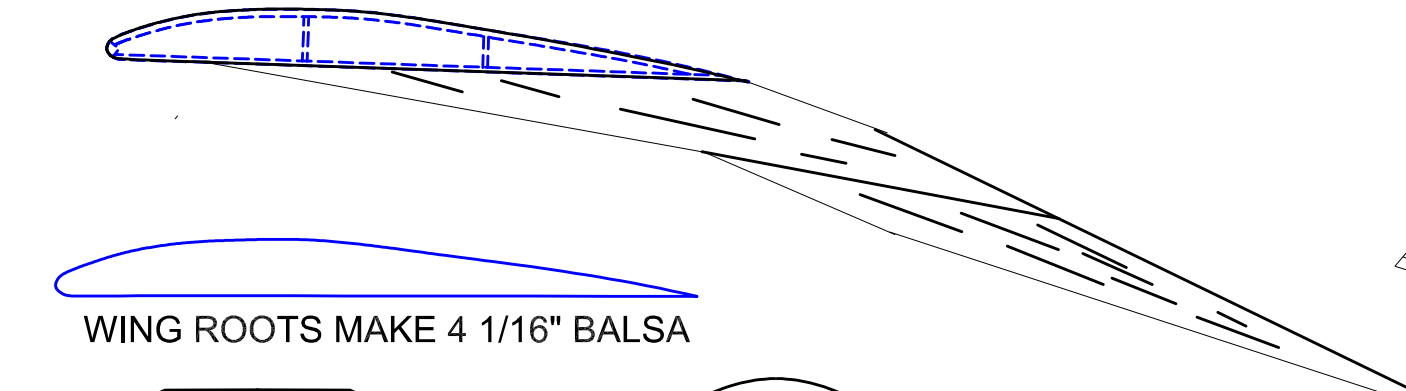
DRAWN BY TOM AKERY 20 JULY 2019
 27" SPAN RUBBER POWERED FREE FLIGHT MODEL FROM 3 VIEW
 FREE USE BY MEMBERS OF STICKANDTISSUE.COM
 HIPPOCKETAERONAUTICS.COM OR SMALLFLYINGARTS.COM
NOT FOR RESALE



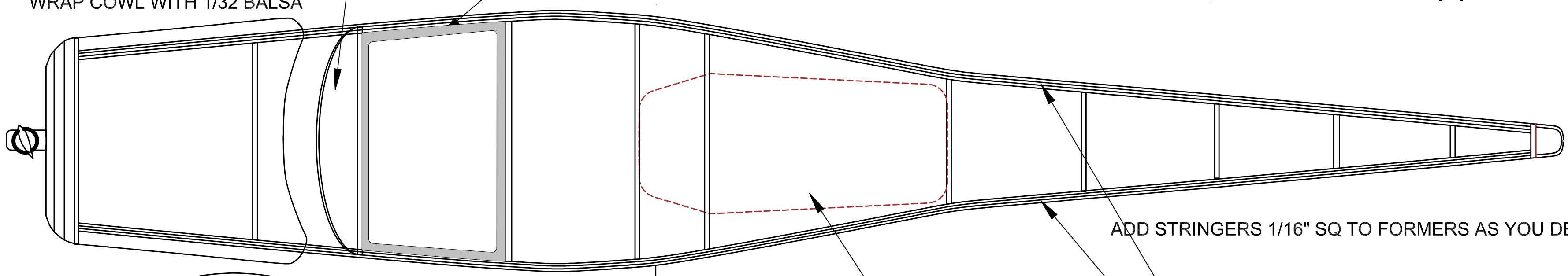
FORMER ANGLE GAUGE



ONE PIECE WING SITS ON TOP OF CABIN

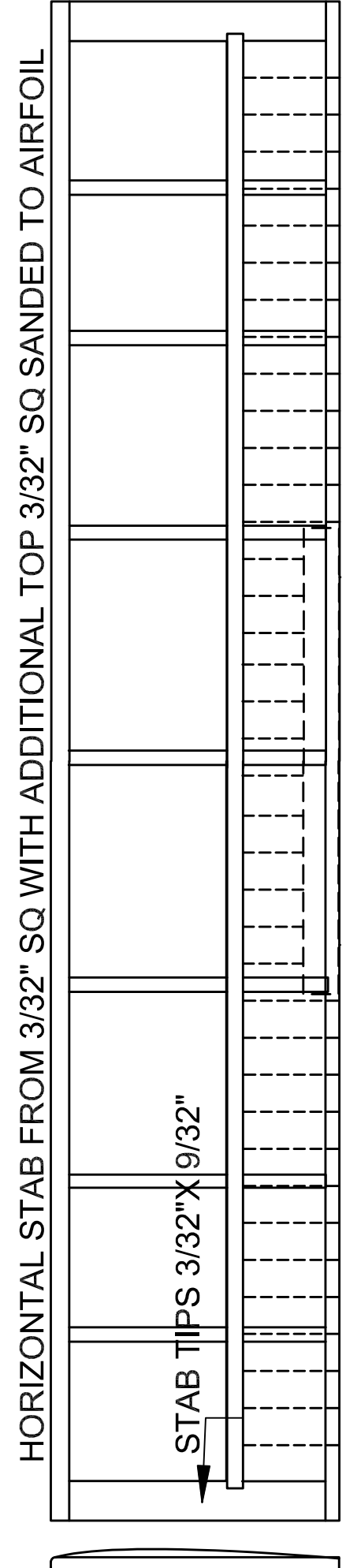


- 1
- 2
- 3
- 4
- 5
- 6
- 7
- 8
- 9
- 10
- 11
- 12



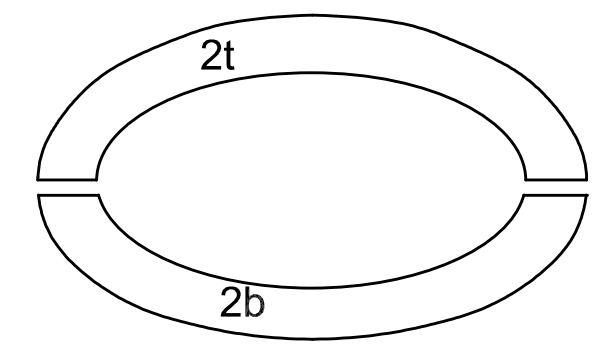
WRAP COWL WITH 1/32 Balsa

ADD STRINGERS 1/16" SQ TO FORMERS AS YOU DESIRE



HORIZONTAL STAB FROM 3/32" SQ WITH ADDITIONAL TOP 3/32" SQ SANDED TO AIRFOIL

STAB TIPS 3/32" X 9/32"

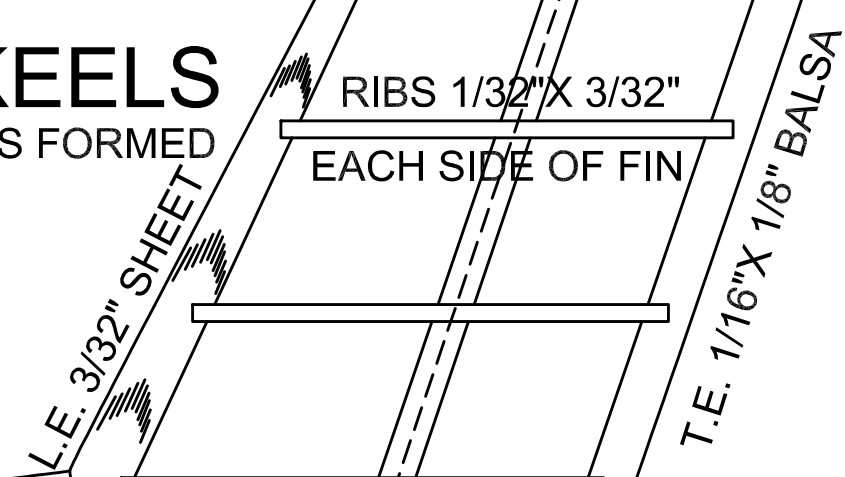


REAR WINDOW

HORIZONTAL KEELS
 3 LAMS 1/16 X 1/32 Balsa STRIPS FORMED

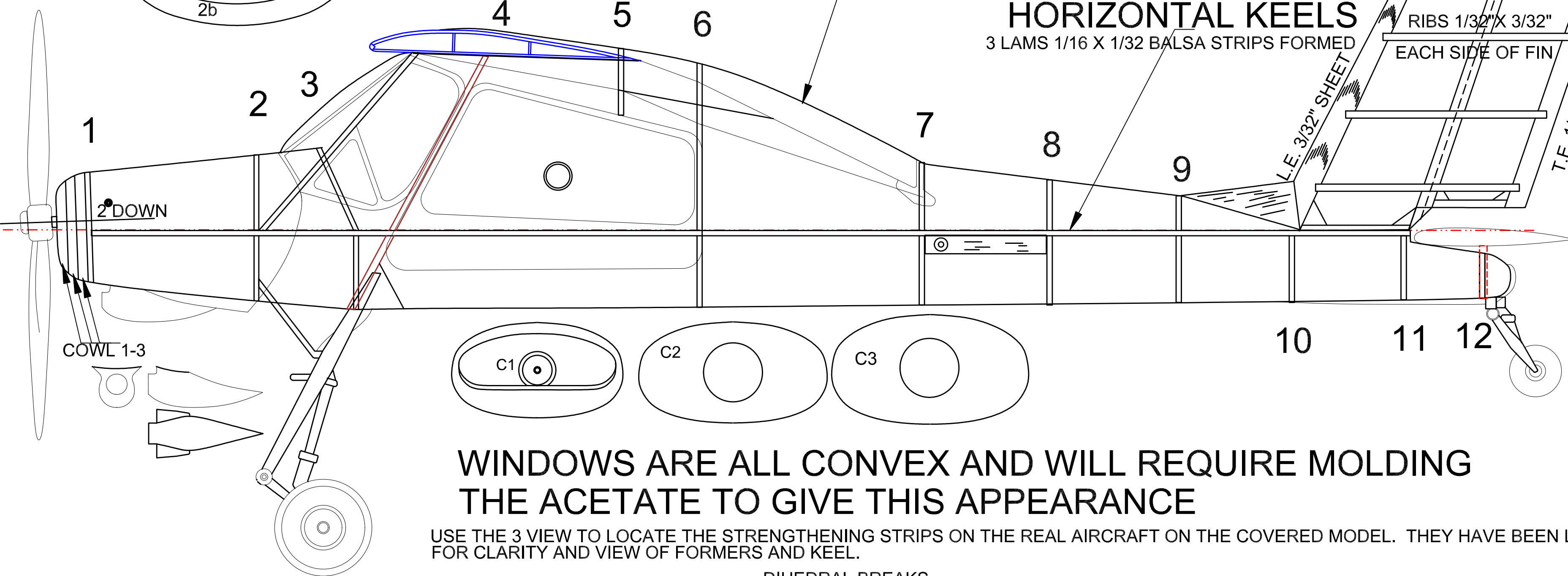
SPAR 3/32" SQ

RIBS 1/32" X 3/32"
 EACH SIDE OF FIN



L.E. 3/32" SHEET

T.E. 1/16" X 1/8" Balsa

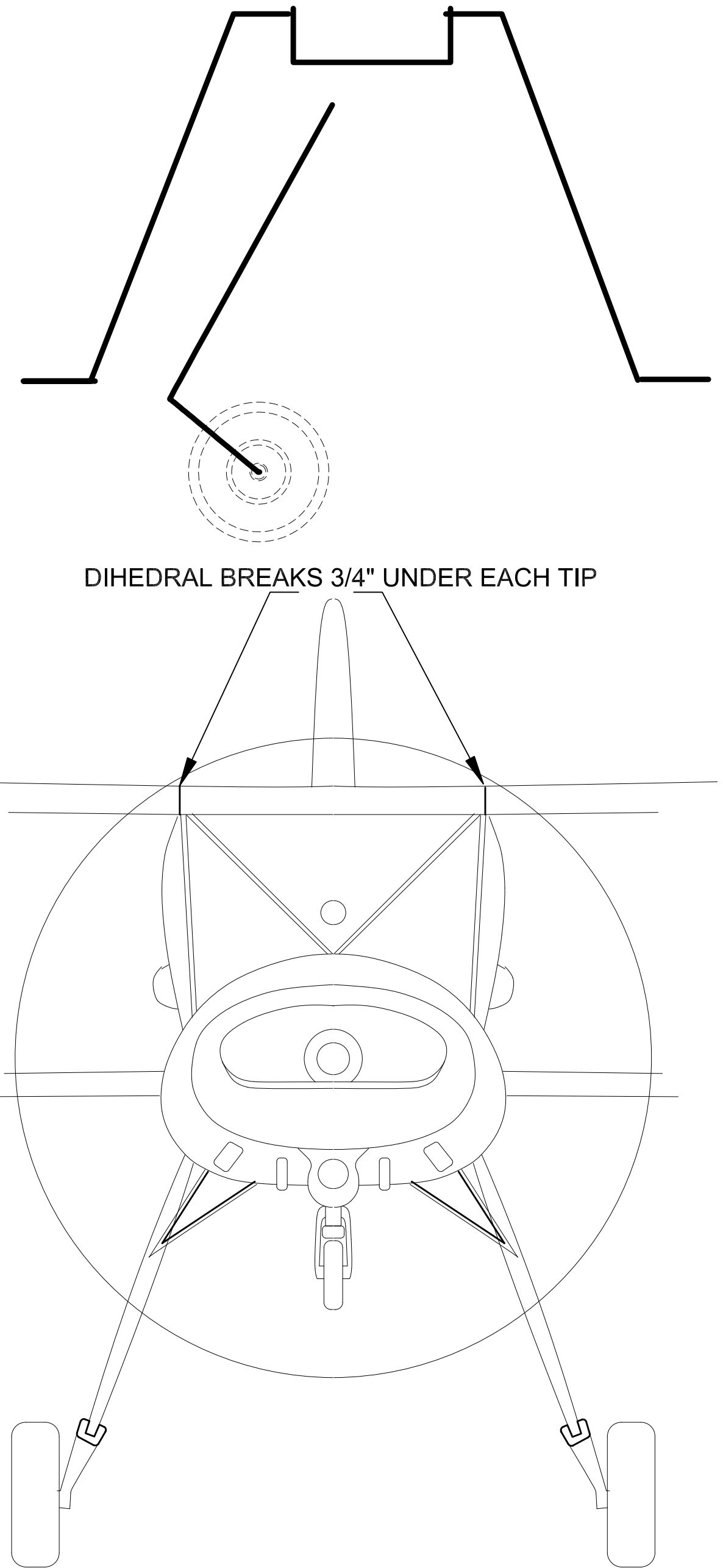


COWL 1-3

2 DOWN

WINDOWS ARE ALL CONVEX AND WILL REQUIRE MOLDING THE ACETATE TO GIVE THIS APPEARANCE

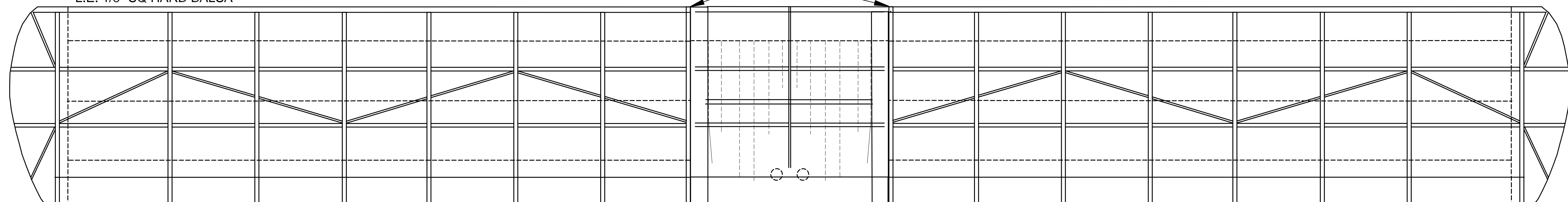
USE THE 3 VIEW TO LOCATE THE STRENGTHENING STRIPS ON THE REAL AIRCRAFT ON THE COVERED MODEL. THEY HAVE BEEN LEFT OFF PLAN FOR CLARITY AND VIEW OF FORMERS AND KEEL.



DIHEDRAL BREAKS 3/4" UNDER EACH TIP

L.E. 1/8" SQ HARD Balsa

DIHEDRAL BREAKS



T.E. 1/16" X 1/2" Balsa SHEET