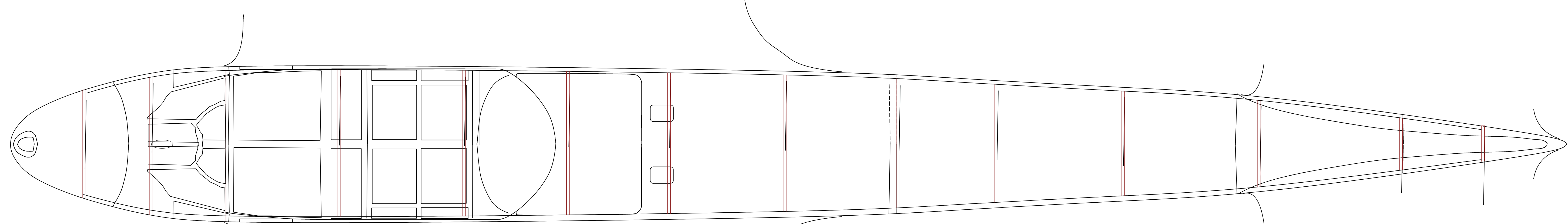
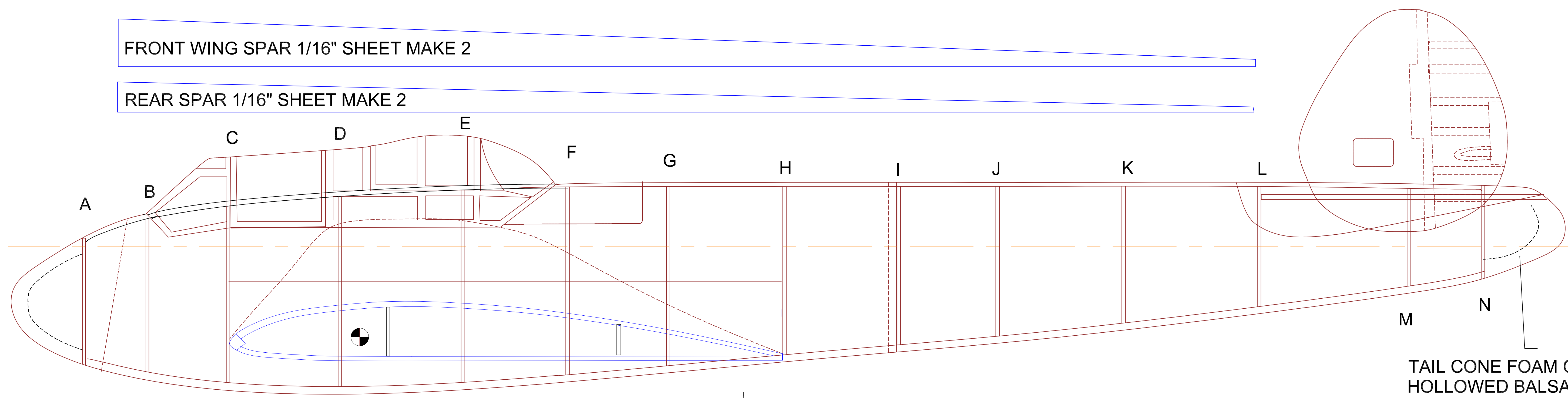
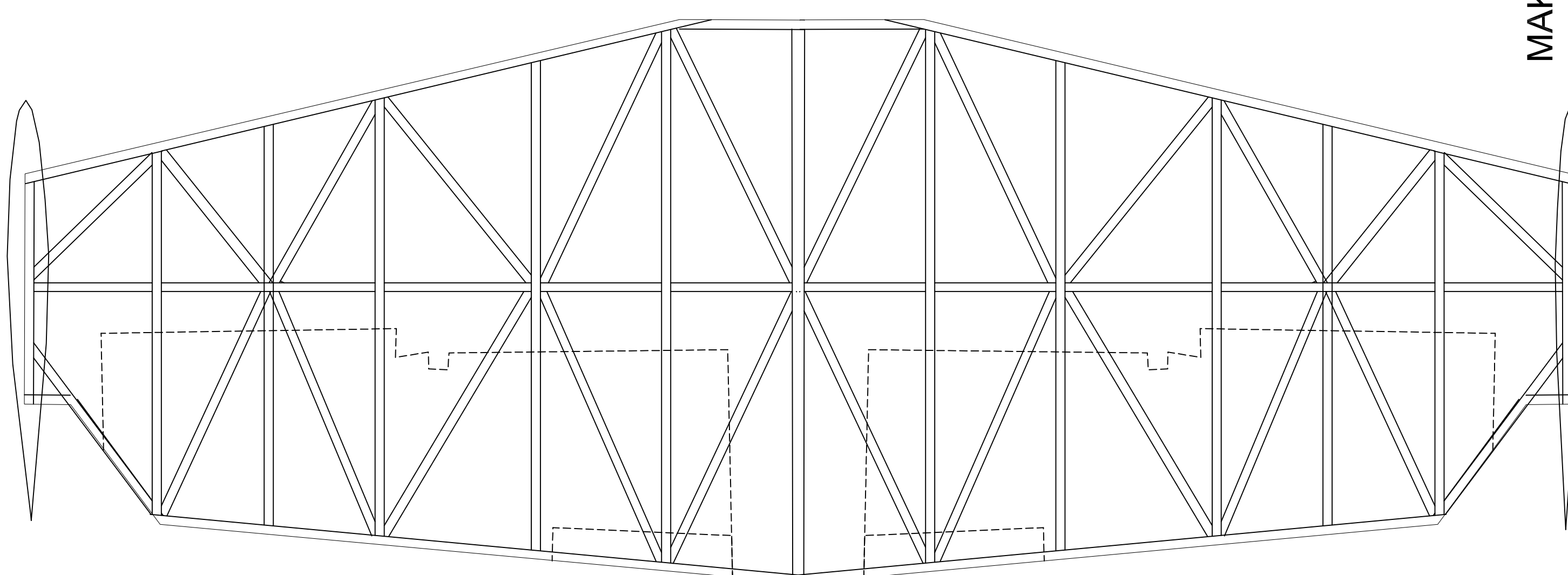


FRONT WING SPAR 1/16" SHEET MAKE 2

REAR SPAR 1/16" SHEET MAKE 2

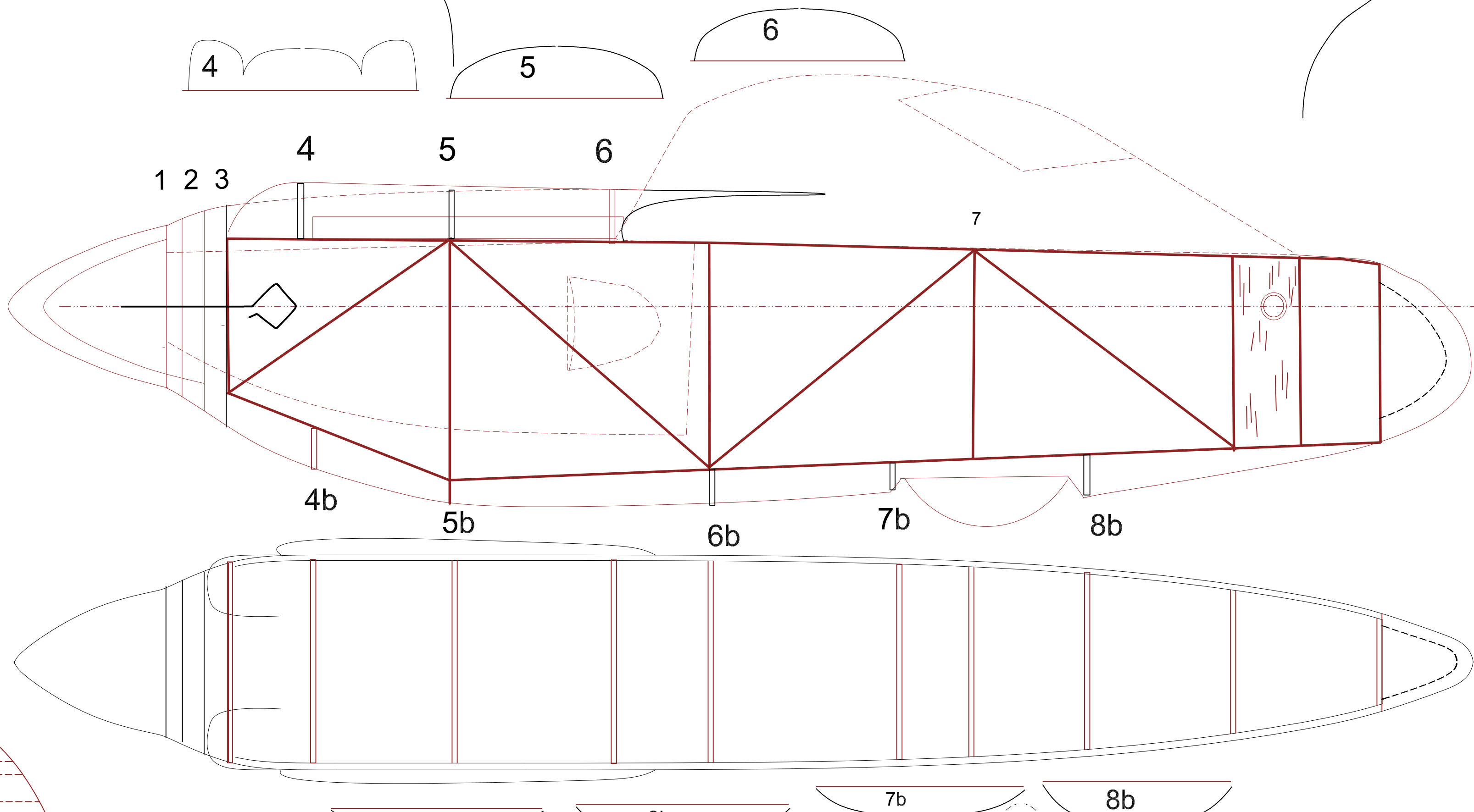
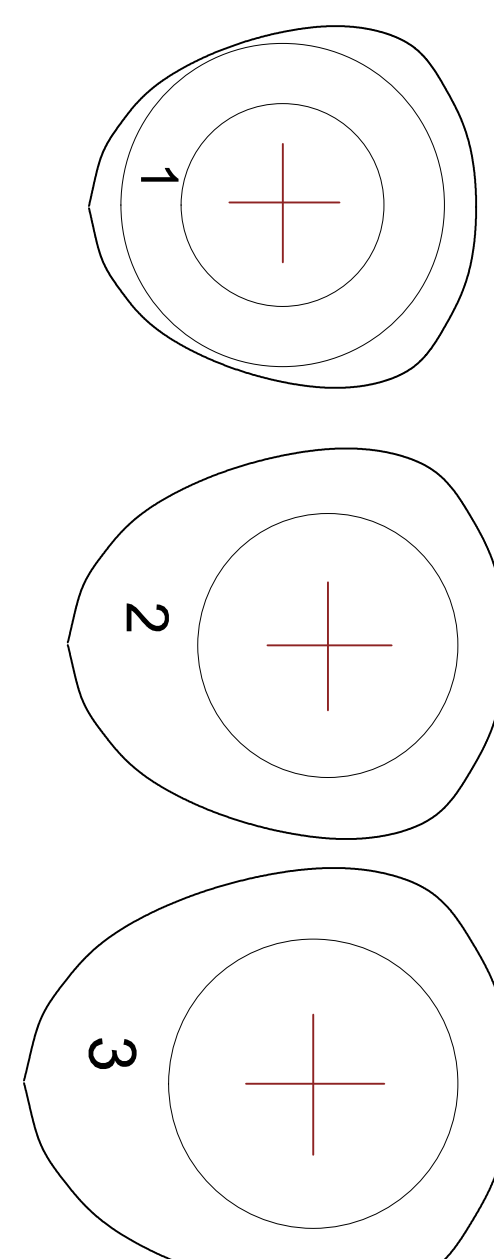
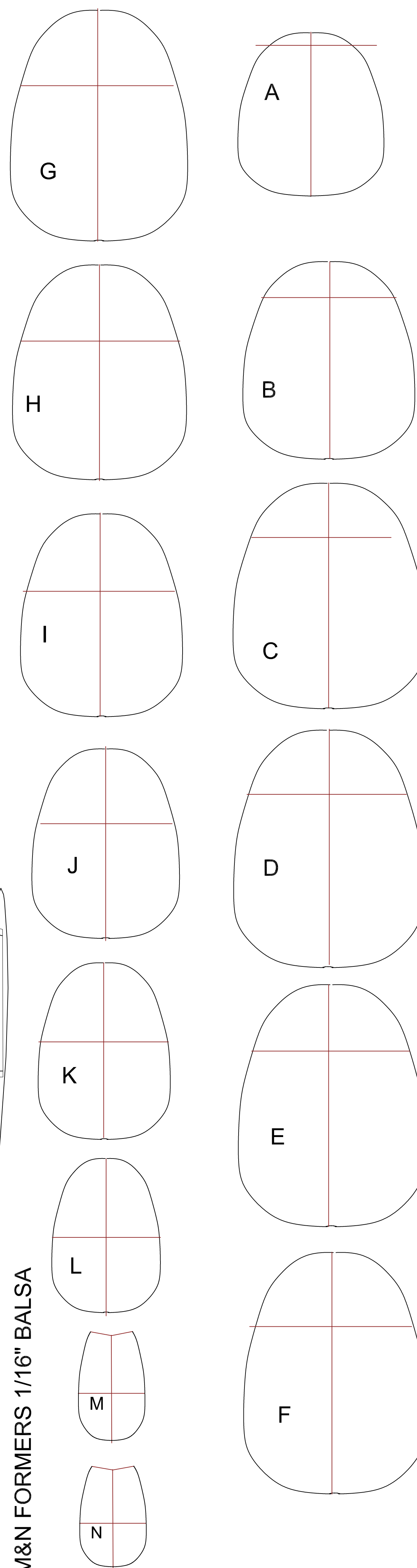


HORIZONTAL STAB MAKE FROM 3/32" SQ BALS



HORIZ STAB DIHEDRAL GAUGE

MAKE FUSELAGE FORMERS FROM 3 STRIPS 1/32"X1/16" LAMINATED



MAKE 2

HORIZ STAB SLOT

4b

VERT STAB 3/32" SHEET SAND TO AIRFOIL SHAPE

T.E. 1/16"X1/2" SHEET

TRUSSES 1/32" SHEET

RIBS 1/16" SQ

SPARS 1/16" SHEET

WING REES SLICED RIB CONST

L.E. 1/8" SQ ON EDGE HARD BALS

DIHEDRAL 2" UNDER EACH TIP

DIHEDRAL BREAK

YAKOVLEV YAT-2

DRAWN BY TOM AKERY 1 JUNE 24
45" SPAN TWIN RUBBER POWER
CHECK OUT STICKANDTISSUE.COM