

MODEL CRAFT JIMMIE ALLEN FF-68

BUILD THE TWO BODY SIDES BY USING THE DARK OUTLINE ON THE PLAN. MAKE TWO "EXACTLY" THE SAME FOR BEST RESULTS. PUT BODY SIDES TOGETHER BY CUTTING CROSS PIECES AS SHOWN ON TOP VIEW OF FUSELAGE. THIS FORMS A BOX SECTION AND TOP FORMERS NOS. ONE TO EIGHT AND STRINGERS. INSTALL WINDSHIELD AND LANDING GEAR. POSITION STRUTS AS PER PLAN AND BIND AND GLUE WELL. THE WING SUPPORT WIRES ARE MADE FROM THE PATTERN SHOWN ON THE FRONT VIEW ON THE PLAN.

BUILD THE WING BY FIRST PINNING DOWN THE LEADING EDGE, TRAILING EDGE, THE REAR SPAR AND THE TIP FORMERS G & H. INSTALL RIBS FROM CENTER TO TIP. NOTE THE DIHEDRAL STARTS AT RIB "A" AND IS 13/4" AT TIP.

CONSTRUCT RUDDER AND ELEVATORS AS PER PLAN.

NOSE BLOCK - CUT ROUGH OUTLINE. INSTALL AS SHOWN AND SAND & CARVE TO SHAPE DESIRED. NOTE NOSE BLOCK IS REMOVABLE DO NOT GLUE TO BODY.

COVER MODEL CAREFULLY AND USE DOPE THINNED 50/50 WITH THINNERS TO ATTACH TO FRAME. PAPER MAY BE PUT ON DAMP OR DRY. IF APPLIED DAMP PIN FLAT PIECES TO BLDG. BOARD TO STOP WARPING.

THE WING WILL SLIDE BACK & FORTH AND THIS WILL MAKE IT EASIER TO BALANCE YOUR AIRCRAFT FOR FLYING.

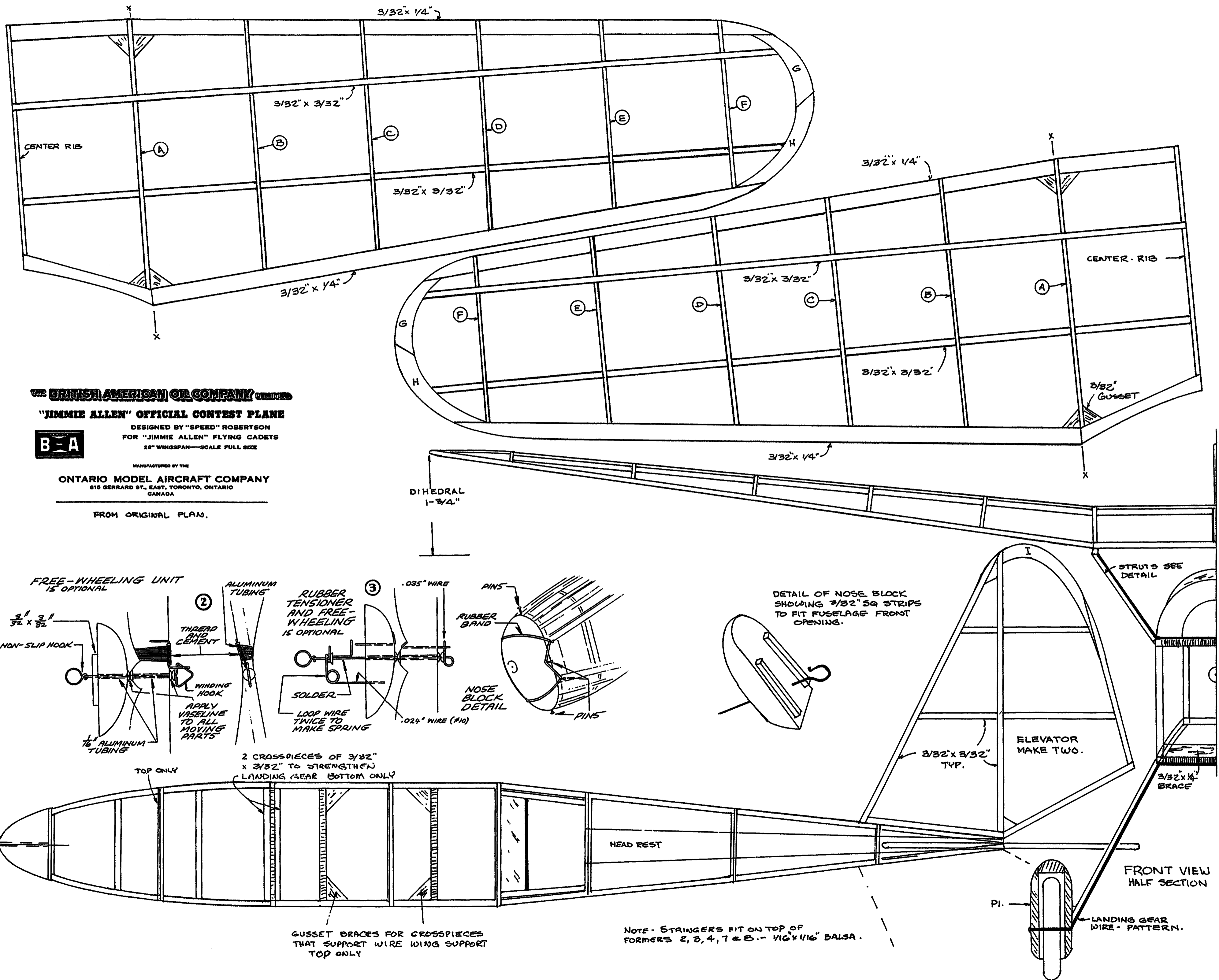
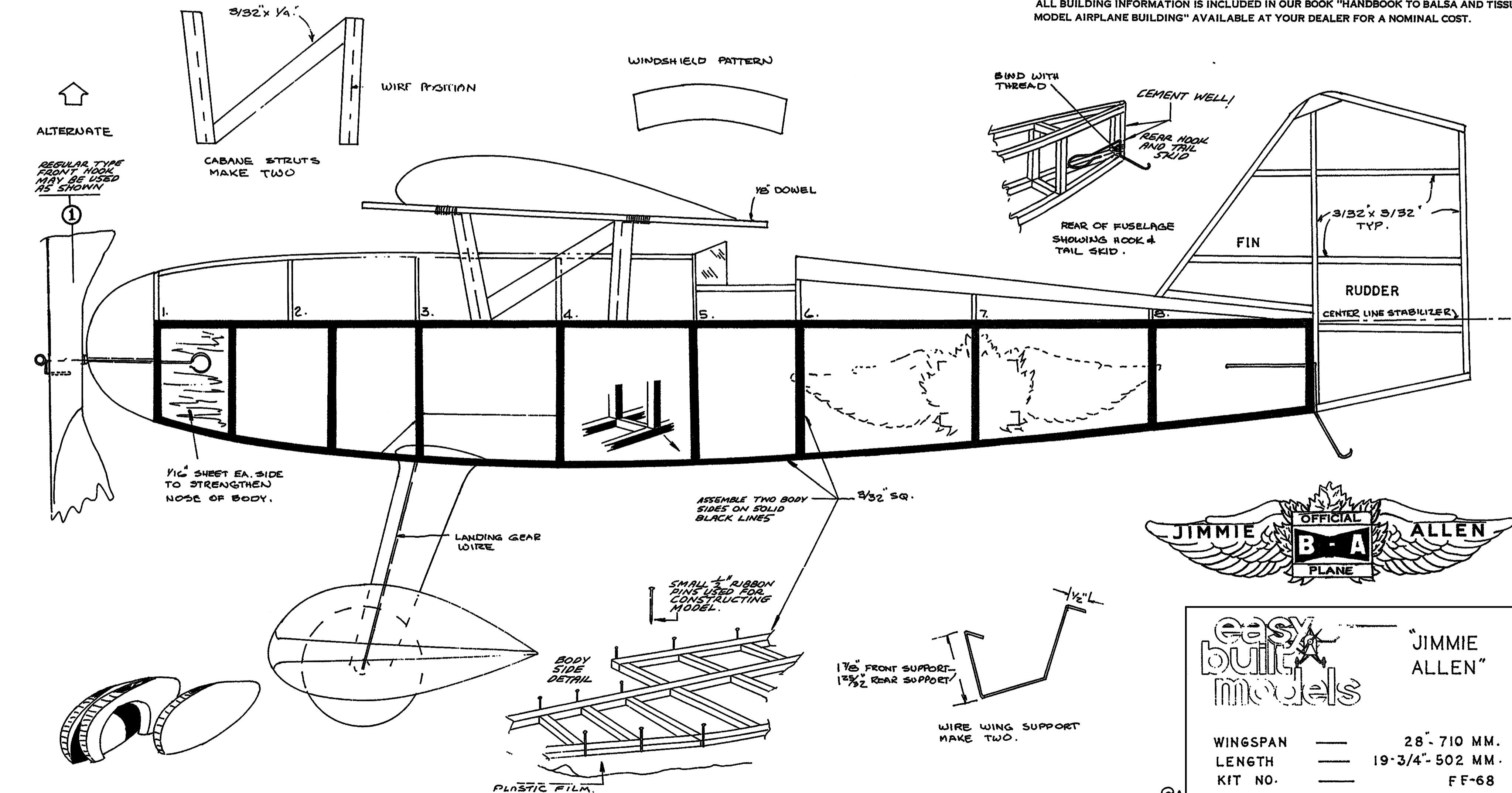
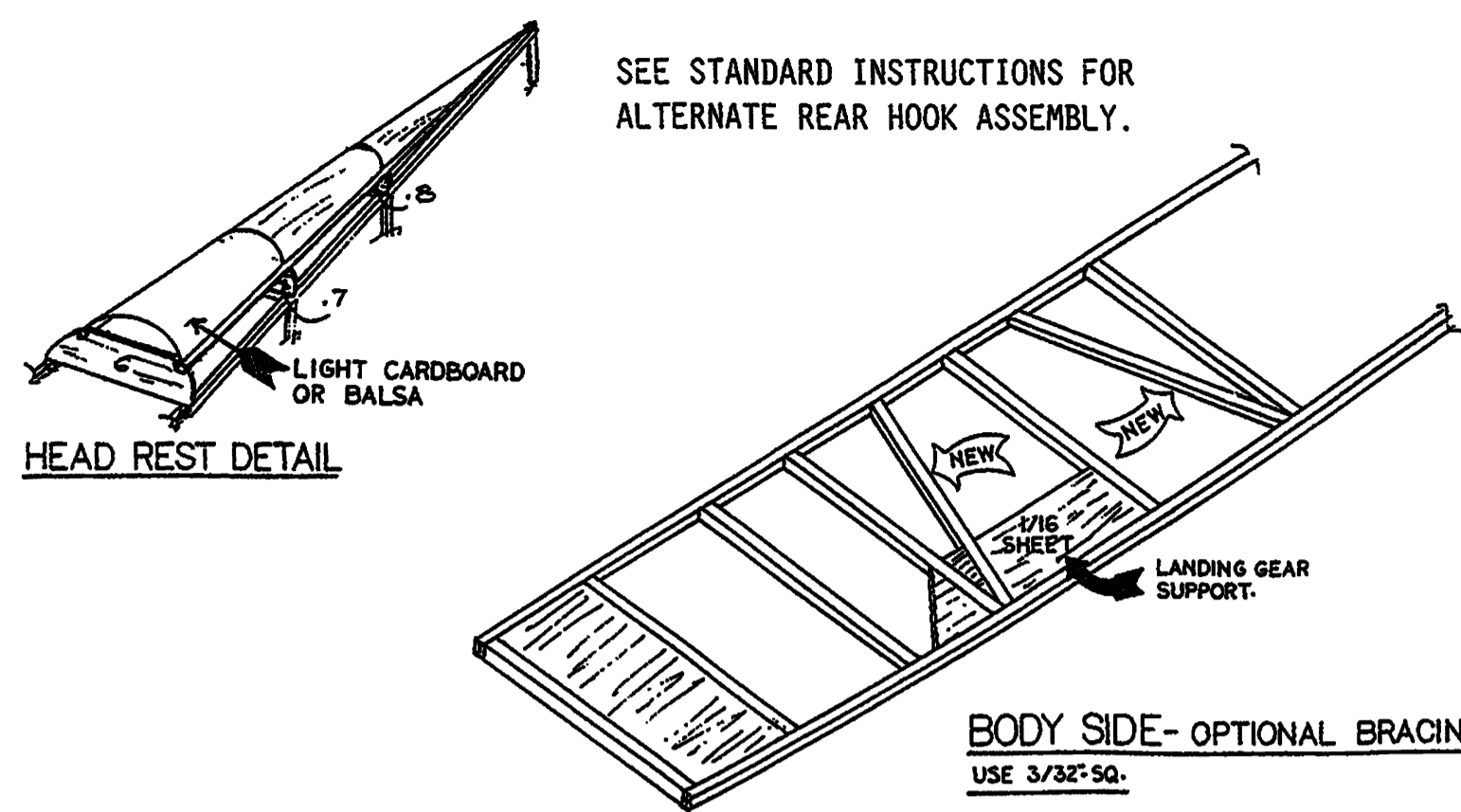
ALL BUILDING INFORMATION IS INCLUDED IN OUR BOOK "HANDBOOK TO BALSA AND TISSUE MODEL AIRPLANE BUILDING" AVAILABLE AT YOUR DEALER FOR A NOMINAL COST.



easy built models

"JIMMIE ALLEN"

WINGSPAN — 28" 710 MM.
 LENGTH — 19-3/4" 502 MM.
 KIT NO. — FF-68



THE BRITISH AMERICAN OIL COMPANY

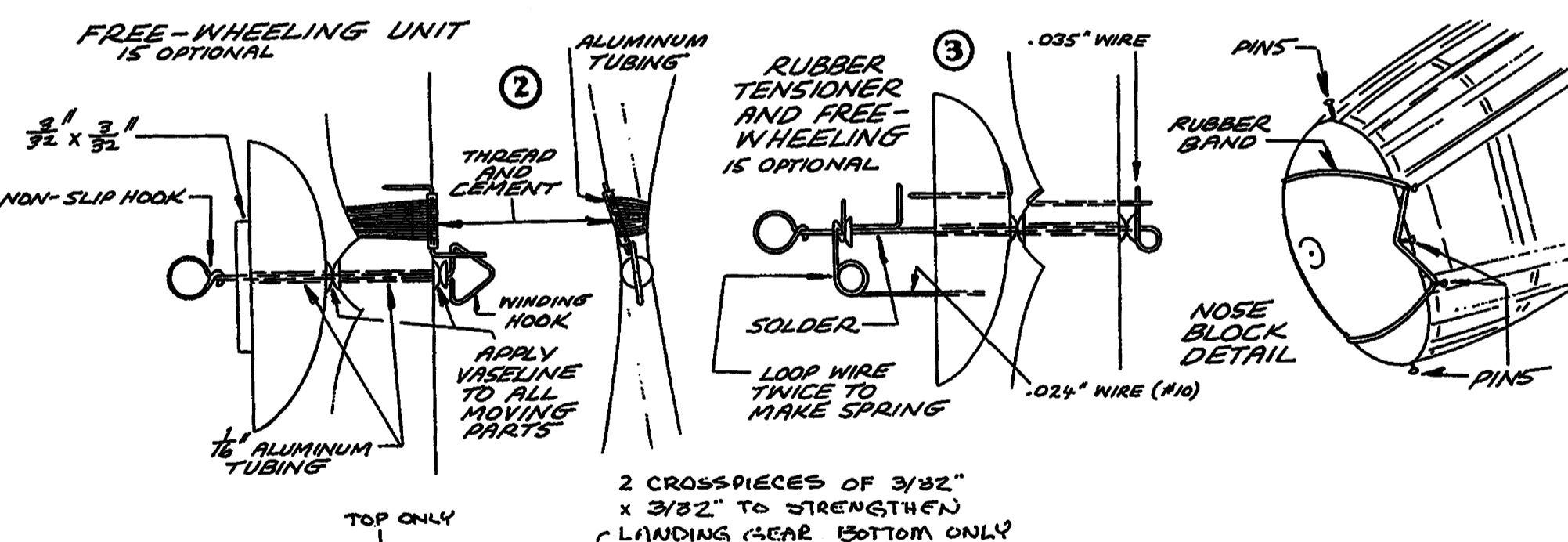
"JIMMIE ALLEN" OFFICIAL CONTEST PLANE

DESIGNED BY "SPEED" ROBERTSON FOR "JIMMIE ALLEN" FLYING CADET'S 28" WINGSPAN—SCALE FULL SIZE

B-A

MANUFACTURED BY THE **ONTARIO MODEL AIRCRAFT COMPANY**
 215 GERRARD ST. EAST, TORONTO, ONTARIO CANADA

FROM ORIGINAL PLANS.



DETAIL OF NOSE BLOCK SHOWING 3/32" SQ STRIPS TO FIT FUSELAGE FRONT OPENING.

NOTE - STRINGERS FIT ON TOP OF FORMERS 2, 3, 4, 7 & 8. - 1/16" x 1/16" BALSA.

