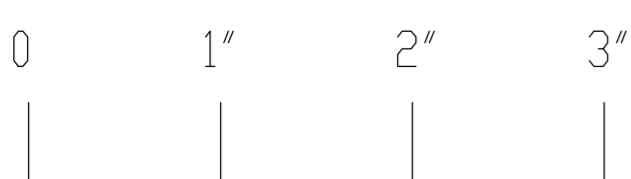
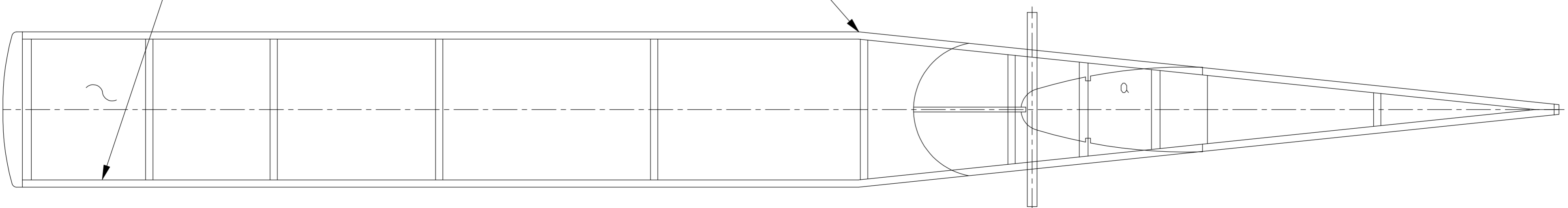
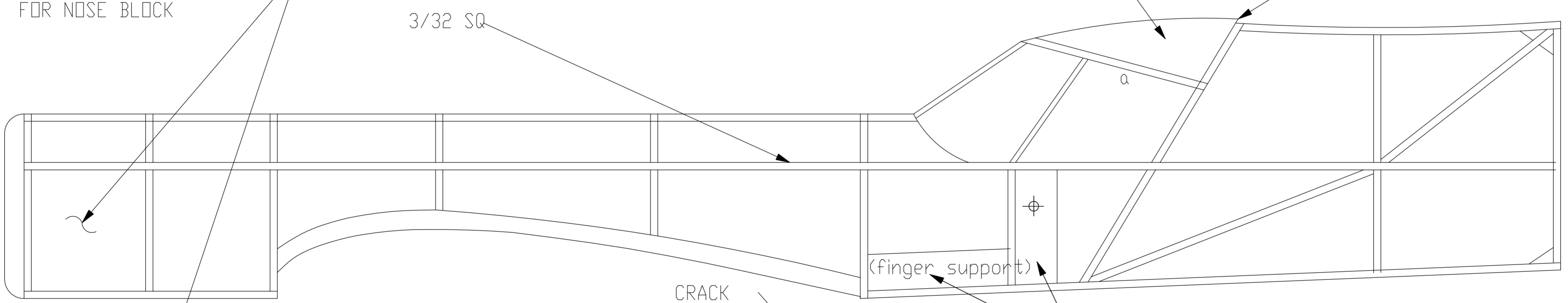


3/32 SHEET, 4 SIDES TO MAKE SQUARE BOX FOR NOSE BLOCK

ASSEMBLY

BALSA OR FOAM

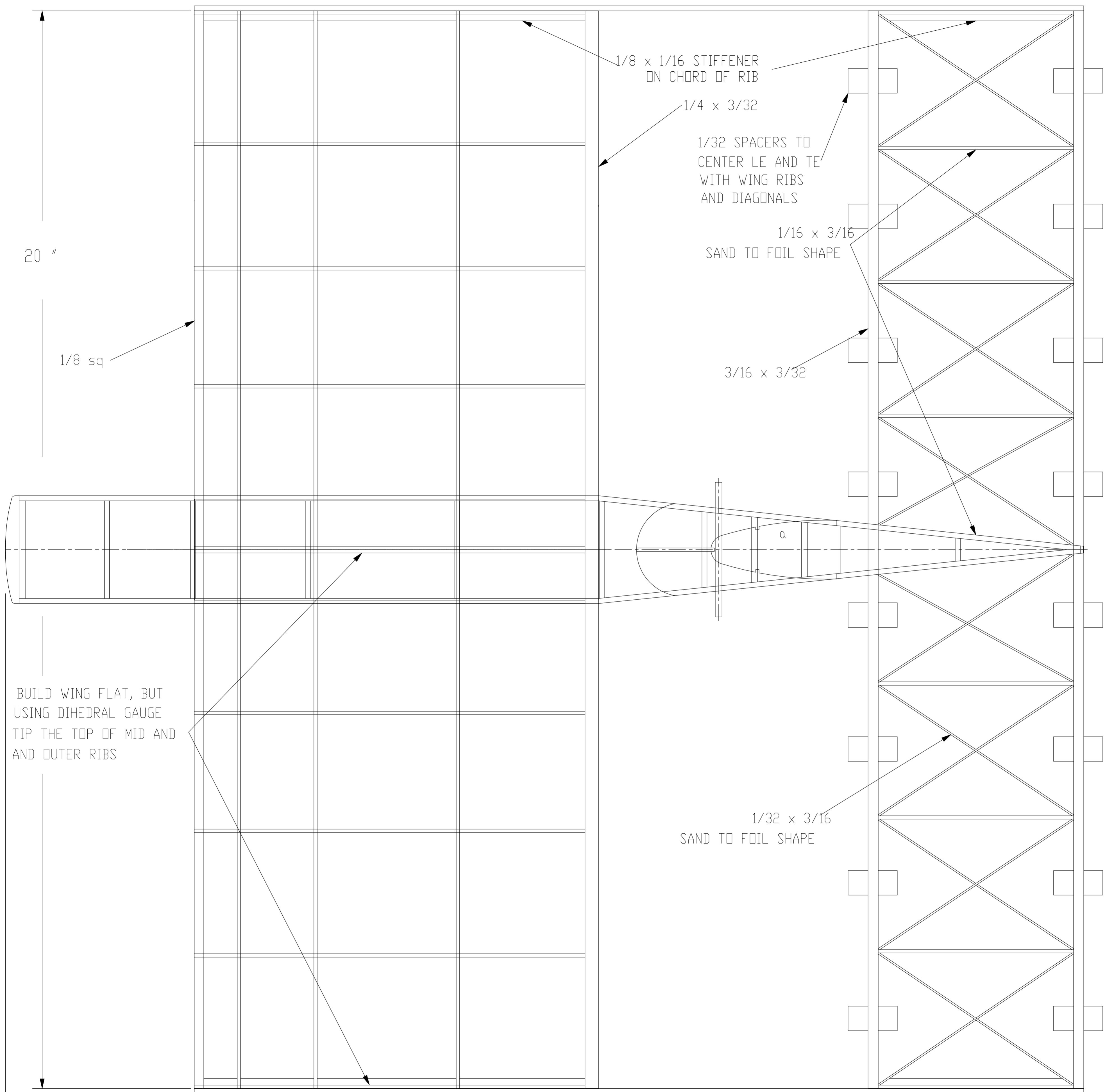
FAIR IN TRAILING EDGE WITH STAB



# Bill Brown's 'HOBBIT'

Drawn by: Don McLellan

Jan. 2011



20 "

1/8 sq

1/8 x 1/16 STIFFENER  
ON CHORD OF RIB

1/4 x 3/32

1/32 SPACERS TO  
CENTER LE AND TE  
WITH WING RIBS  
AND DIAGONALS

1/16 x 3/16  
SAND TO FOIL SHAPE

3/16 x 3/32

a

BUILD WING FLAT, BUT  
USING DIHEDRAL GAUGE  
TIP THE TOP OF MID AND  
AND OUTER RIBS

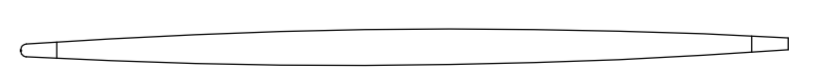
1/32 x 3/16  
SAND TO FOIL SHAPE

WING AREA = 150 SQ INS

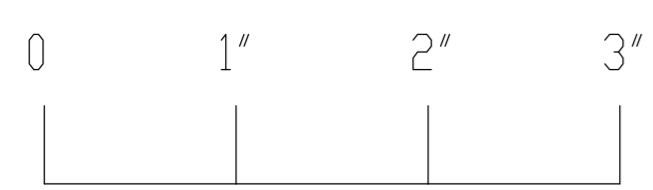
$$TV = 80.25/150 \times 12.5/7.5 = .89$$

$$C \text{ of } G = 16 + 36 \times .89 = 48.1\%$$

STAB AREA = 80.25 SQ INS



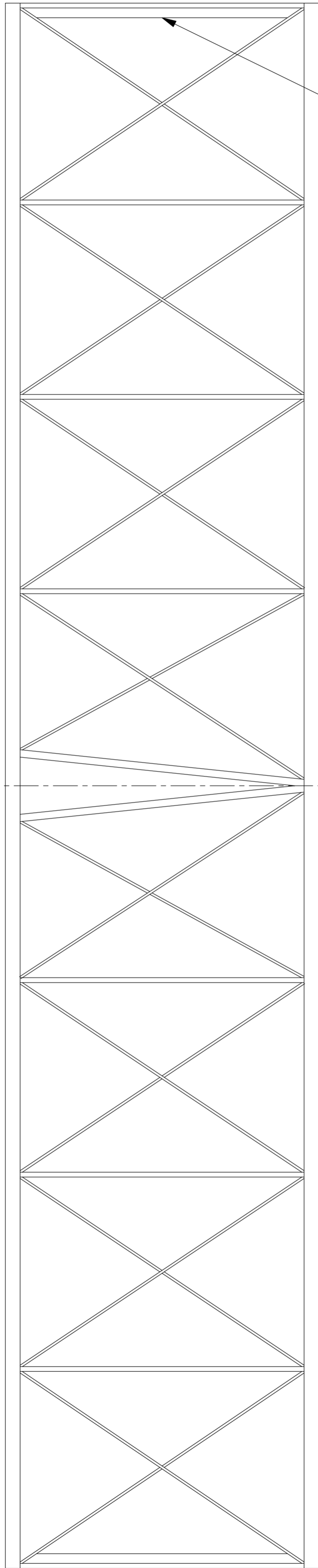
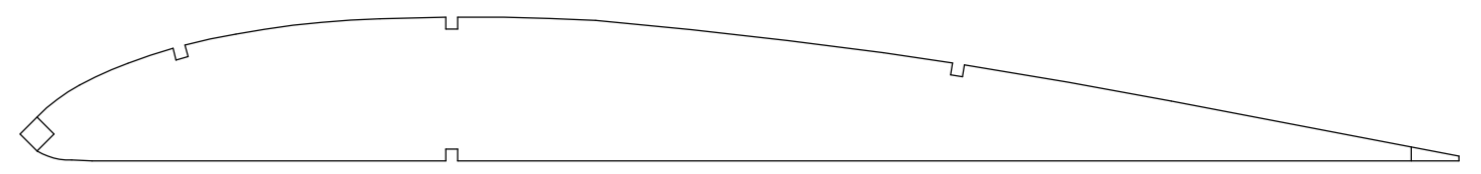
20"



# Bill Brown's 'HOBBIT'

Drawn by: Don McLellan

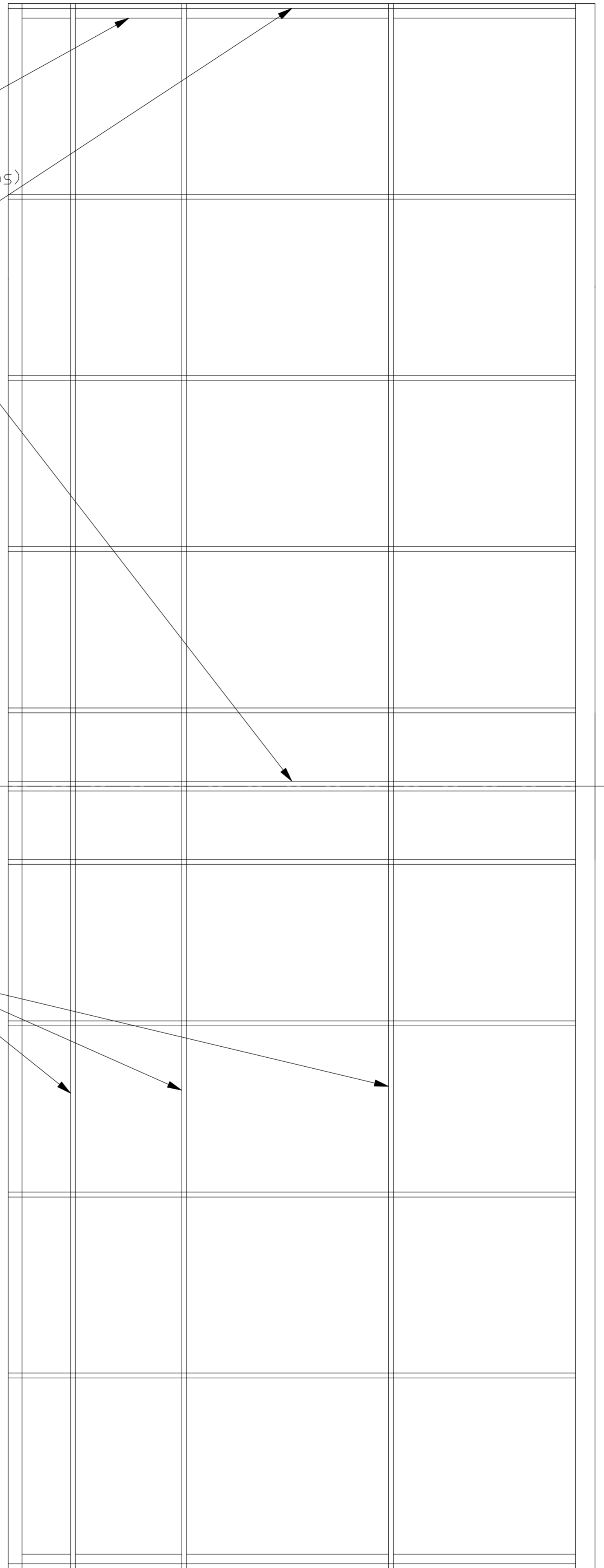
Jan. 2011



1/8 x 1/16 STIFFENER  
ON CHORD OF RIB  
(to prevent tissue  
from bowing outer ribs)

USING DIHEDRAL GAUGE  
TIP THE TOP OF MID AND  
AND OUTER RIBS

3/32 SQ  
(drawn as 1/16 sq)



# Bill Brown's 'HOBBIT'

Drawn by: Don McLellan

Jan. 2011