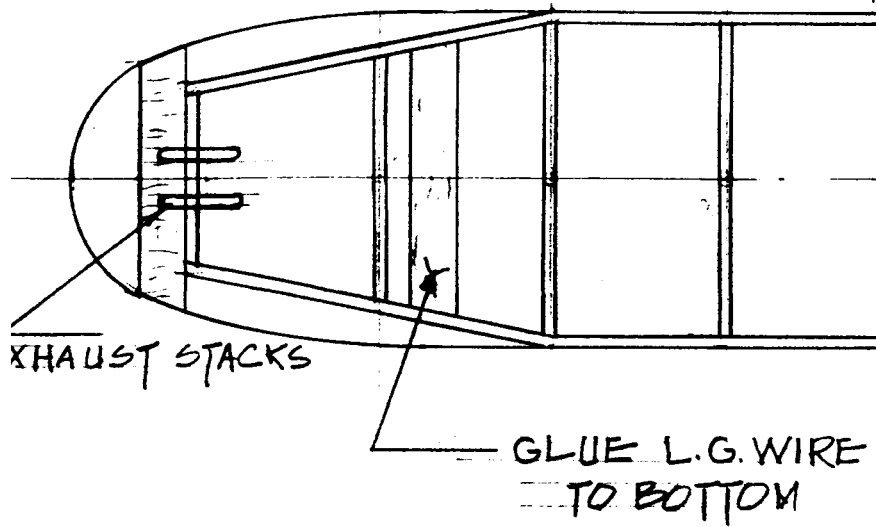
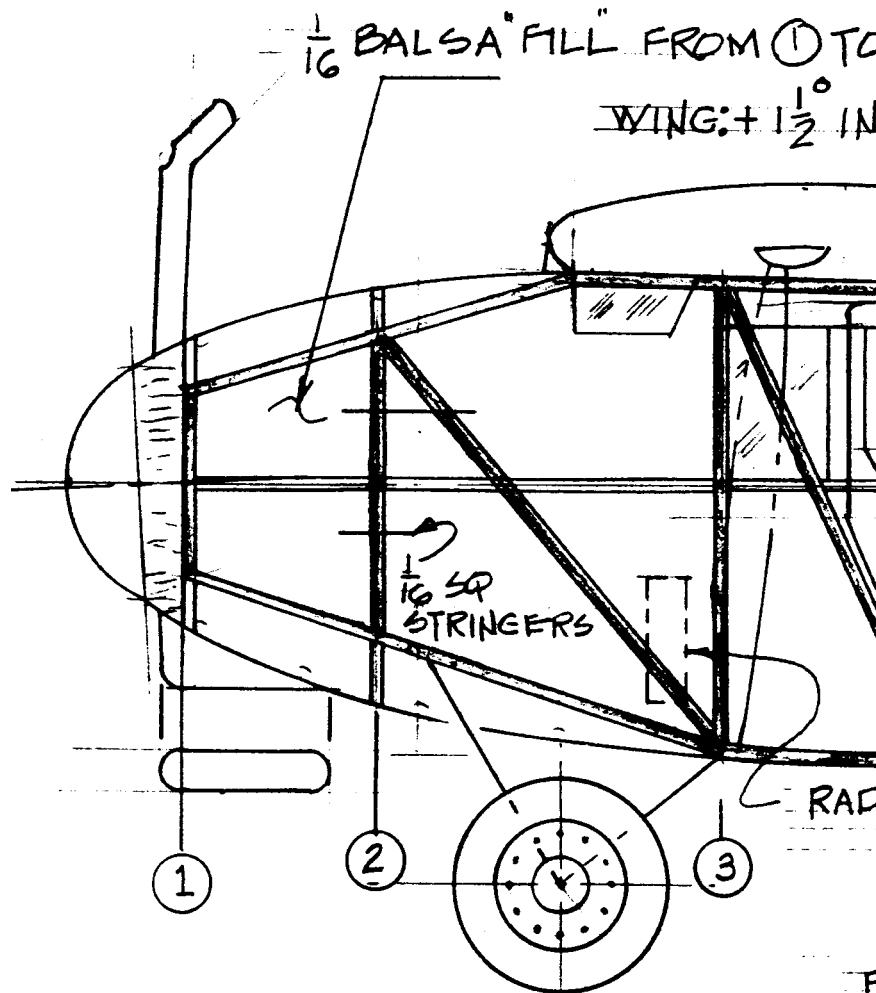


$\frac{1}{16}$  Balsa FORMERS



EXHAUST STACKS

GLUE L.G. WIRE TO BOTTOM

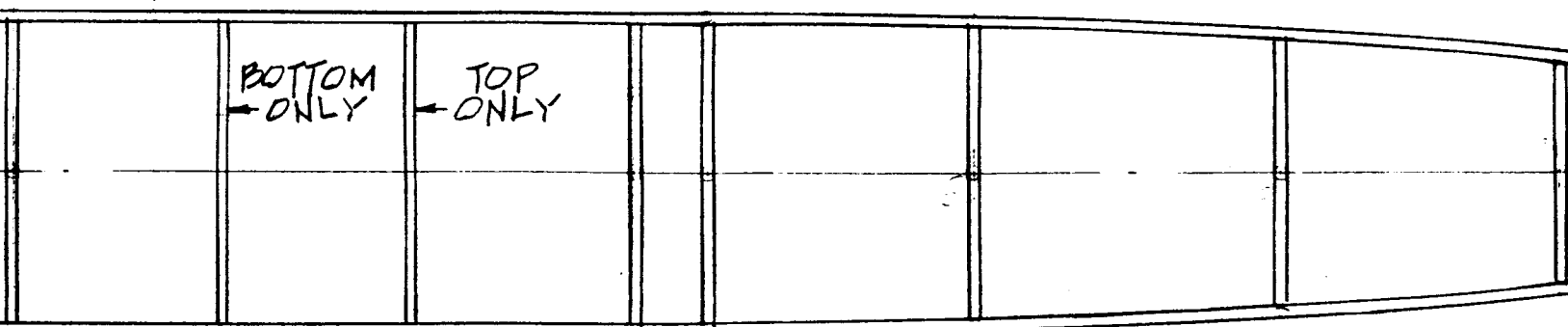
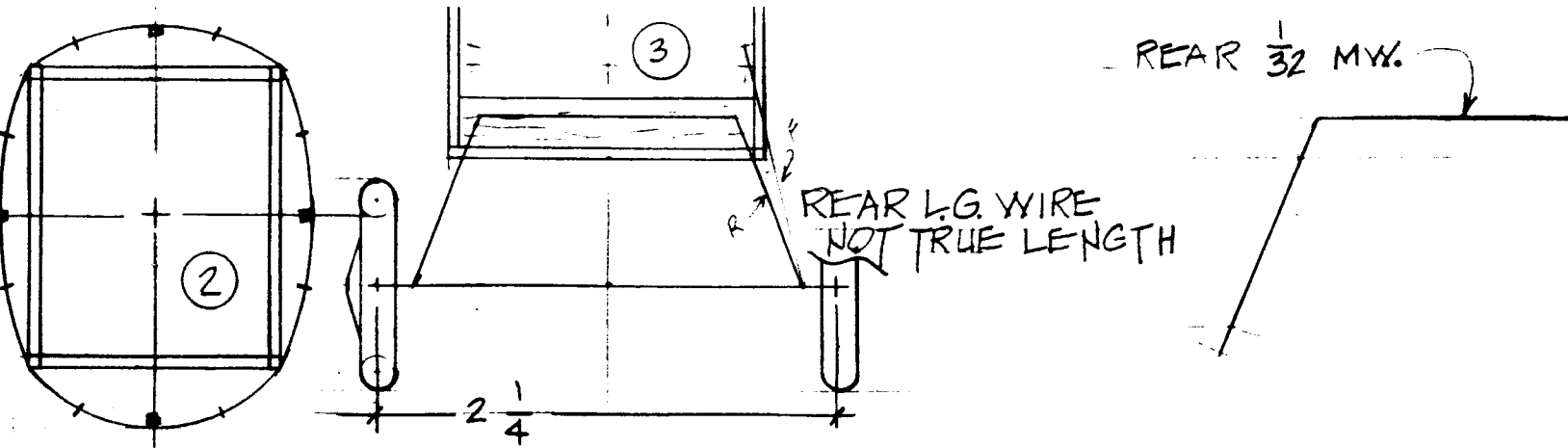


$\frac{1}{16}$  Balsa FILL FROM ① TO WING: +  $1\frac{1}{2}$  IN

$\frac{1}{16}$  SQ STRINGERS

RAD

① ② ③



G. WIRE  
TOM

**MODEL DATA**

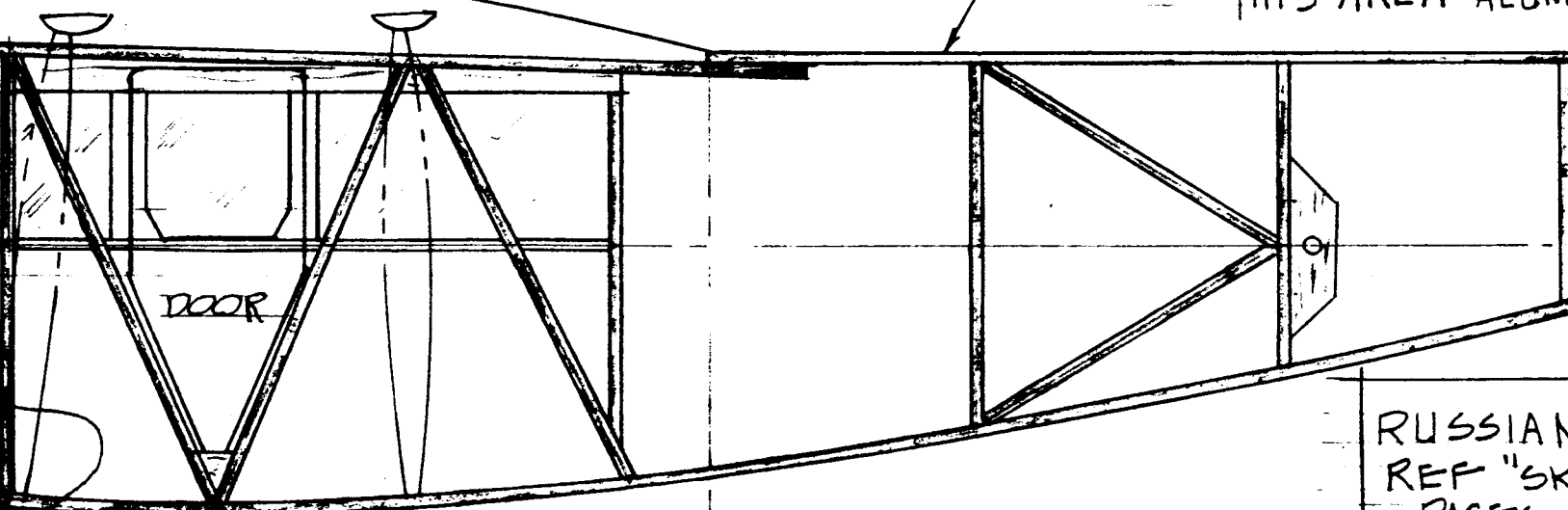
WING ~ SPAN: 24" AREA: 88.8 in<sup>2</sup>  
 HORIZ TAIL AREA = 18.97 in<sup>2</sup>  
 $H.T./W = \frac{18.97}{88.8} = 21\%$

FIN-R  
1/16 BA

FROM ① TO ③ (GO AHEAD YOU WILL NEED THE WEIGHT!)  
 + 1 1/2° INCIDENCE

1/16 SQ MED Balsa TYP.

THIS AREA ALUM



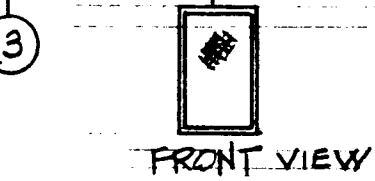
RADIATOR EA. SIDE

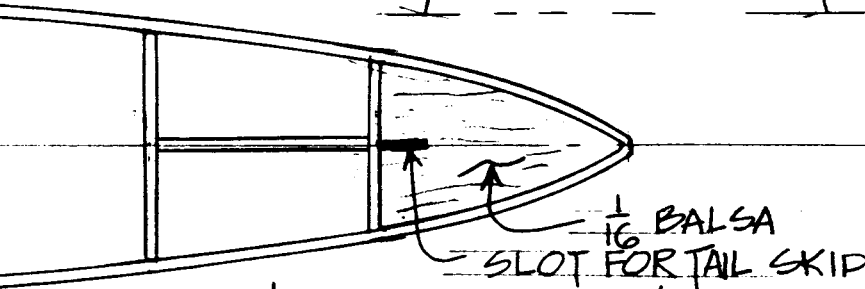
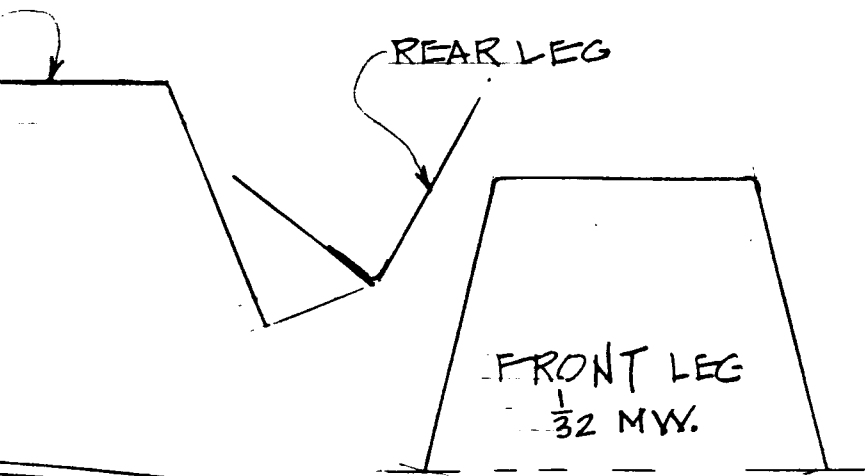
AL. ← → LT. BEIGE

RUSSIAN  
REF "SK  
PAGES

COLOR  
FUSE.  
NATU  
WINGS,

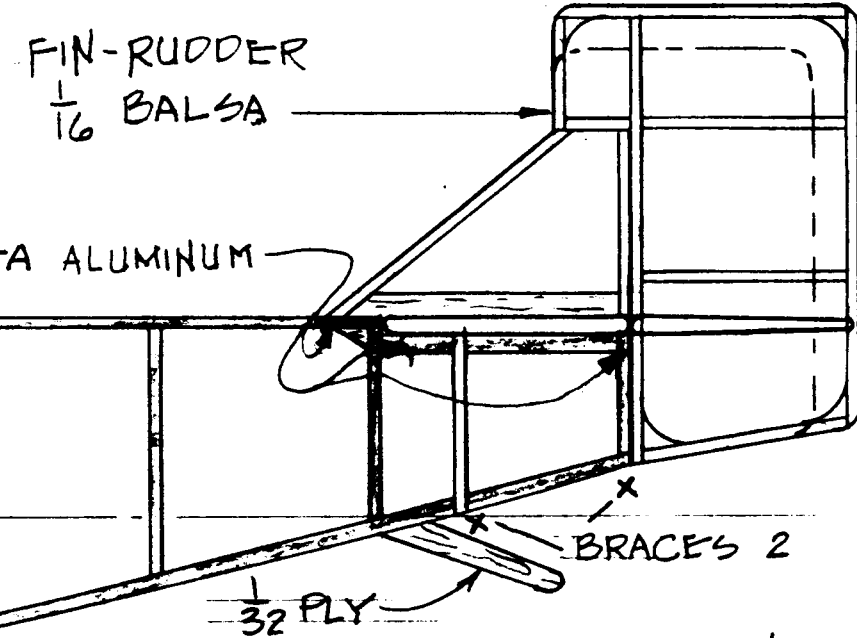
WING & TAIL PLANE STRUTS,  
PROPELLOR ~ RED





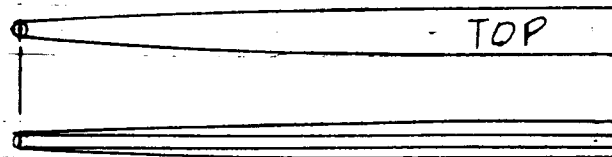
BY: TED DAVIS  
LOU DON TN. 11-97  
423-458-5493

3.8 in<sup>2</sup>  
in<sup>2</sup>

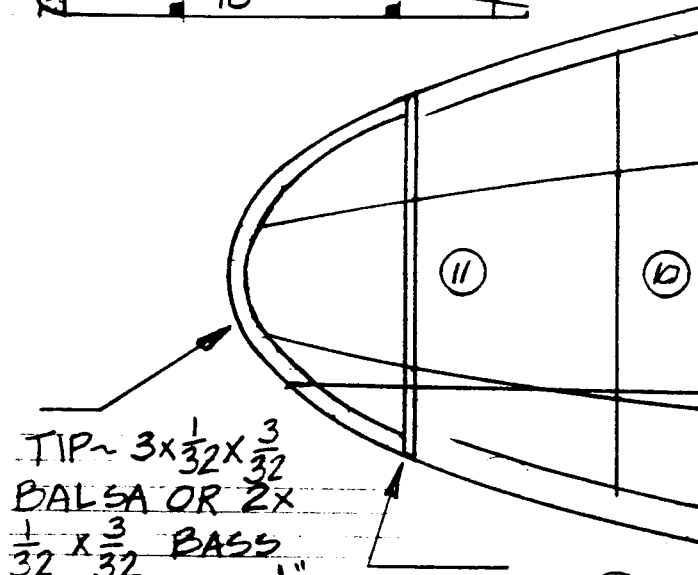
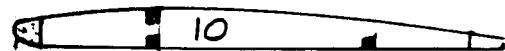
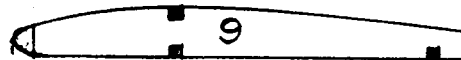
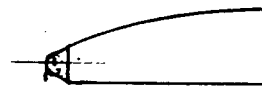
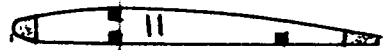
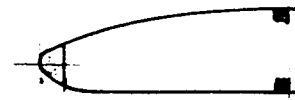
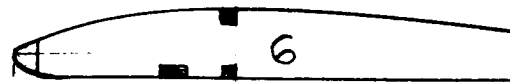
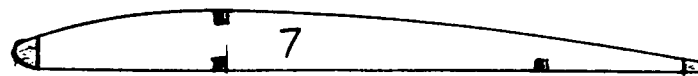


RUSSIAN KALININ K-1 1925  
EF "SKYWAYS" NO 24 OCT 1992  
PAGES 8, 9, 3 VIEW P. 17

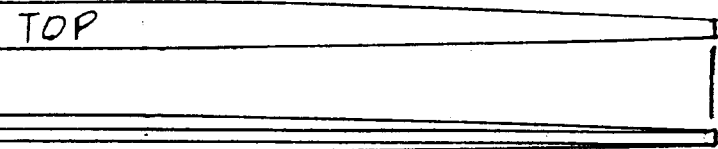
COLOR SCHEME  
FUSE. ALUMINUM TO REAR OF WING  
NATURAL FABRIC (LT. BEIGE) REMAINING  
WINGS, TAIL ASSY LT. BEIGE



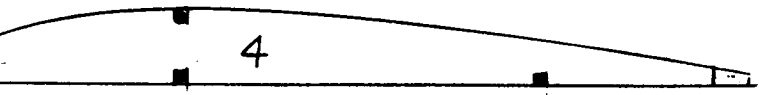
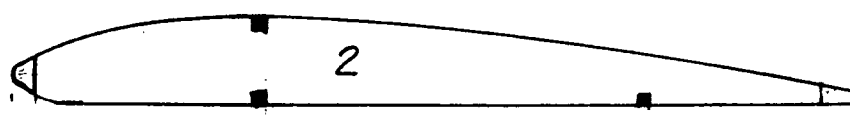
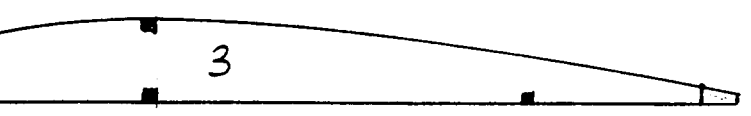
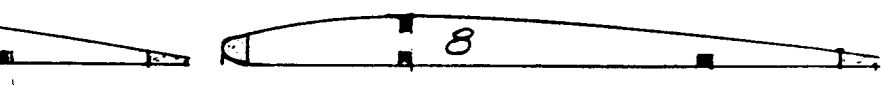
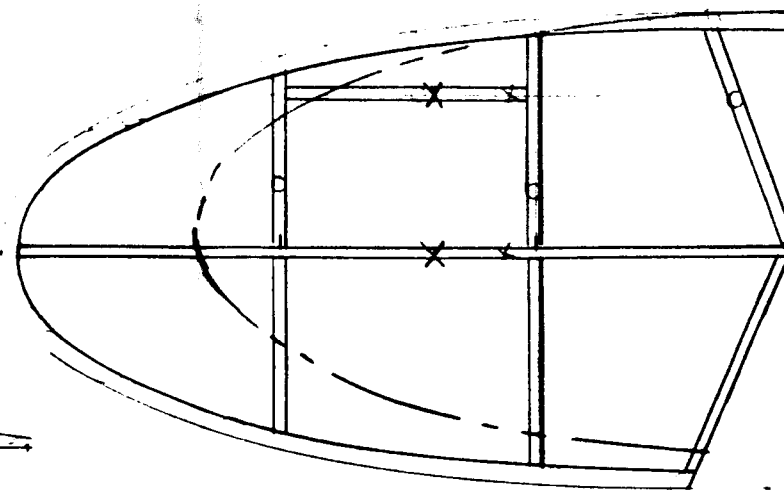
IVING STR  
1/16 Balsa CORE FIL



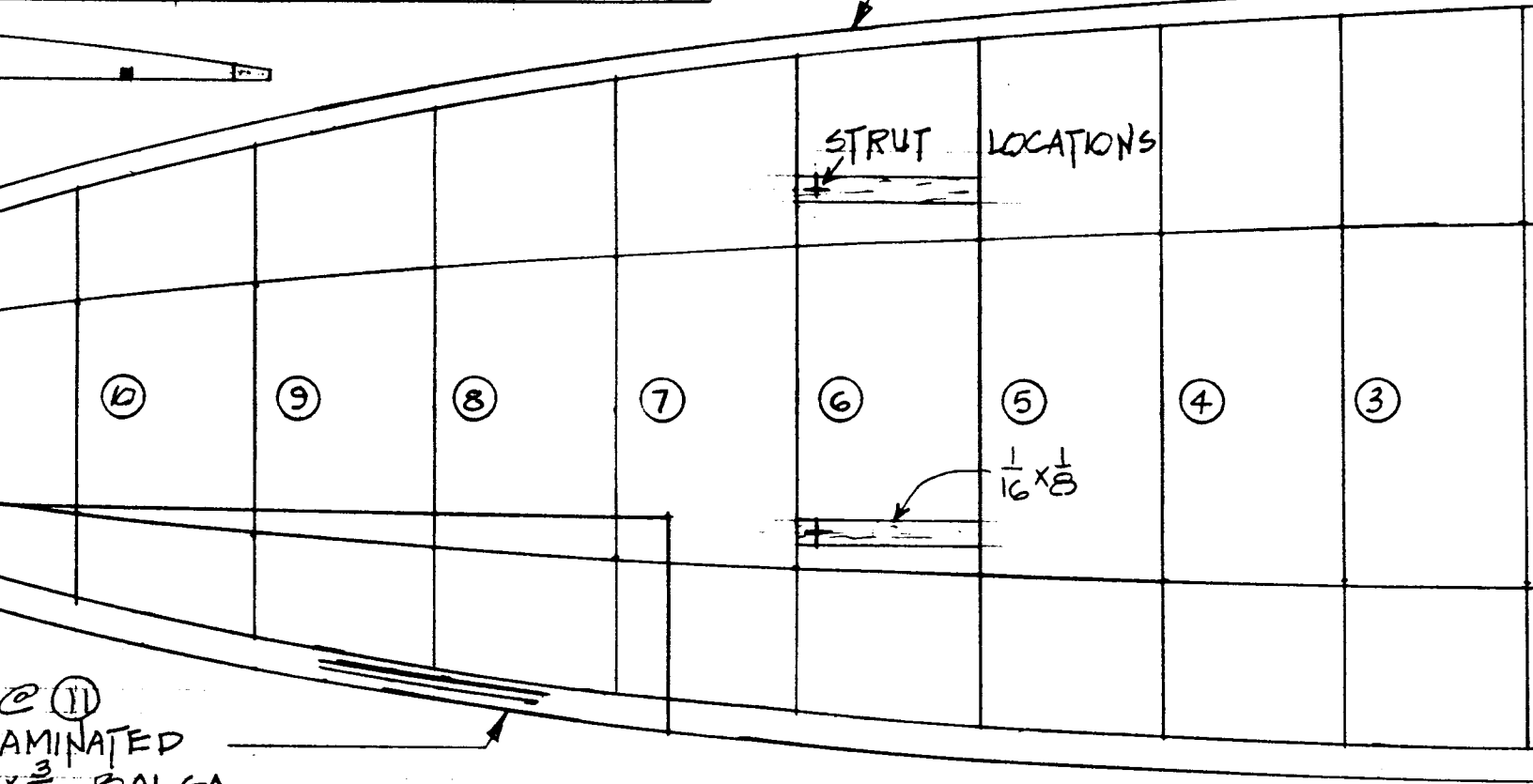
ANGLE TIP UP  
TO MEET SPAR 4° DIHE



TOP  
 NG STRUT 4 RPD  
 RE FILL OUT W/ BLUE FOAM

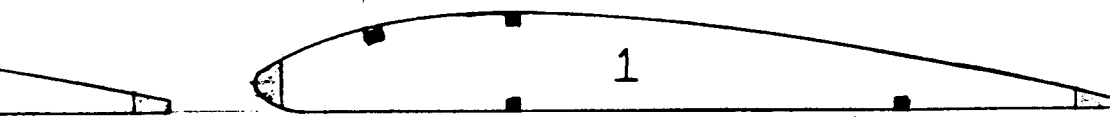
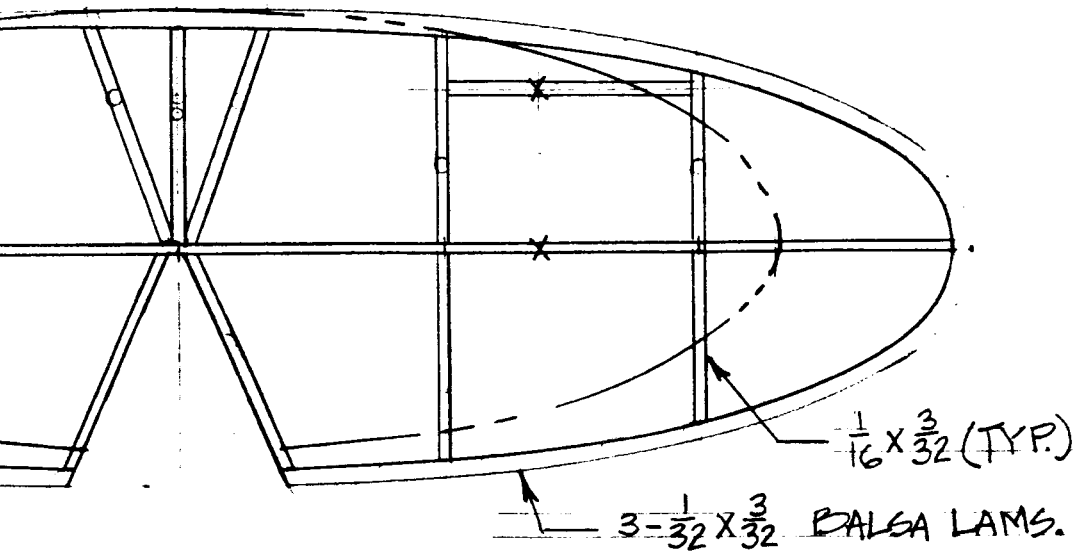


LE. ~ 2 LAMS  $\frac{1}{16} \times \frac{1}{8}$  BALSA

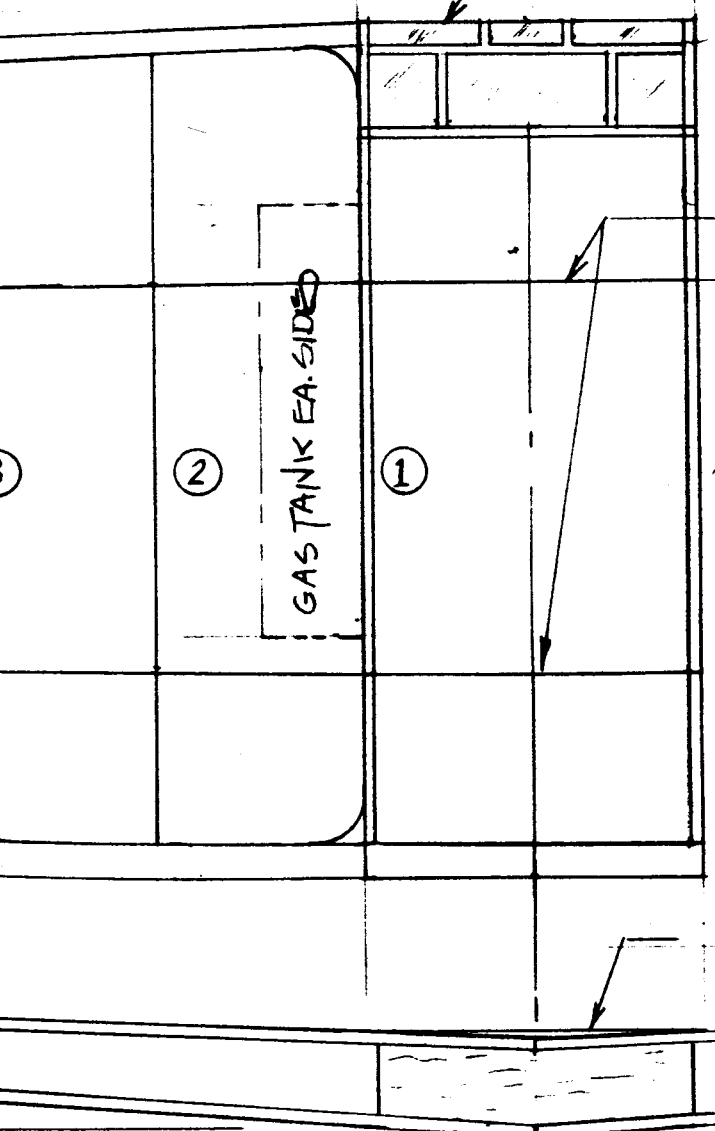


LAMINATED  
 $\frac{3}{32}$  BALSA

4° DIHEDRAL



NO L.E. BTWN ① & ①



SPARS  $\frac{1}{16}$  Balsa  
3 TOTAL

RIBS ①  $\frac{1}{16}$  Balsa  
RIBS ② - ⑪  
 $\frac{1}{32}$  Balsa

FILL IN

$\frac{1}{16}$  SQ SPARS