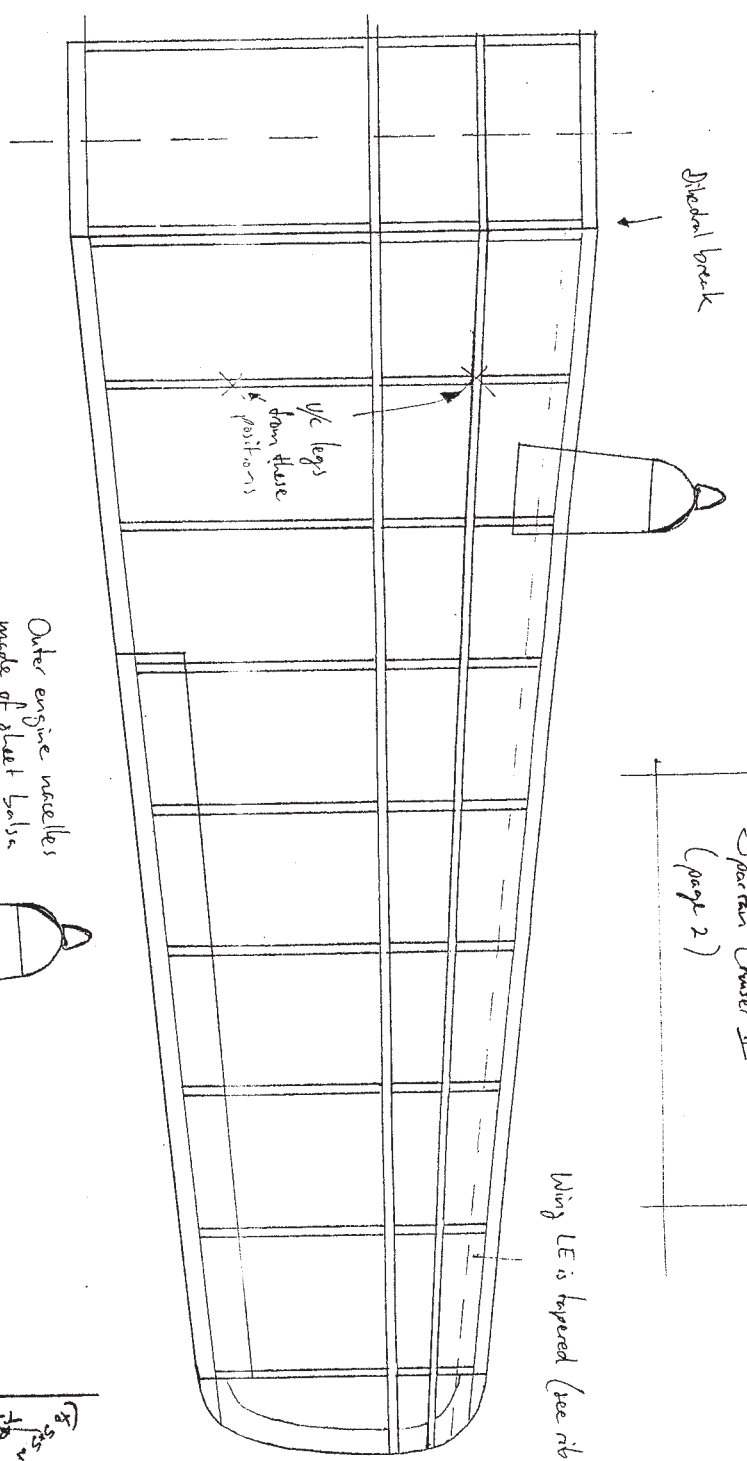


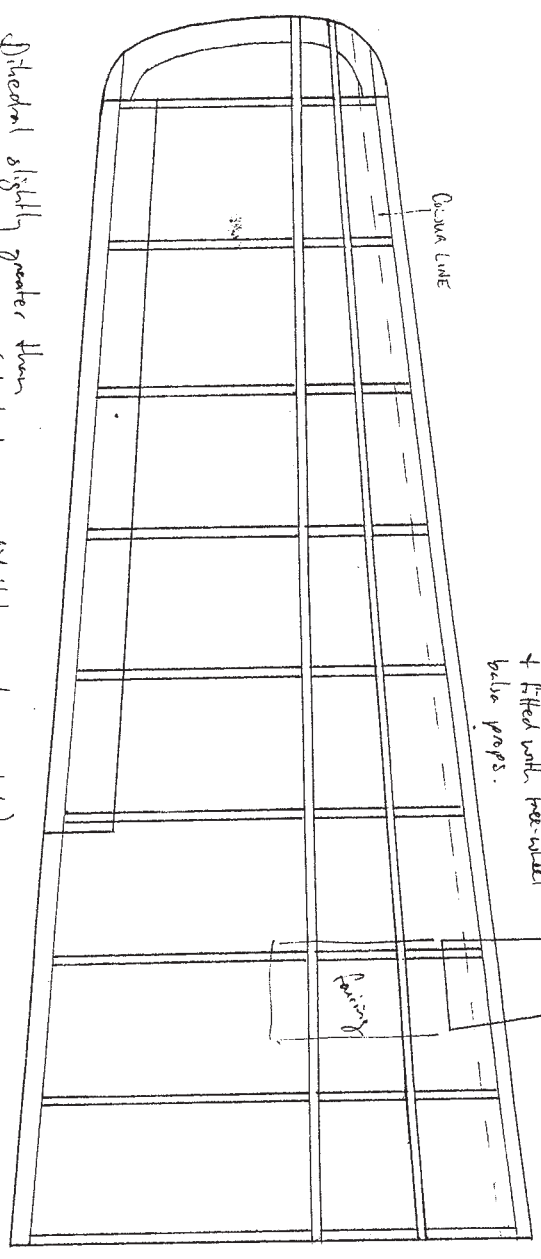
Medial break

Spartan Cruiser II
(page 2)

Wing LE is tapered (see rib patterns)

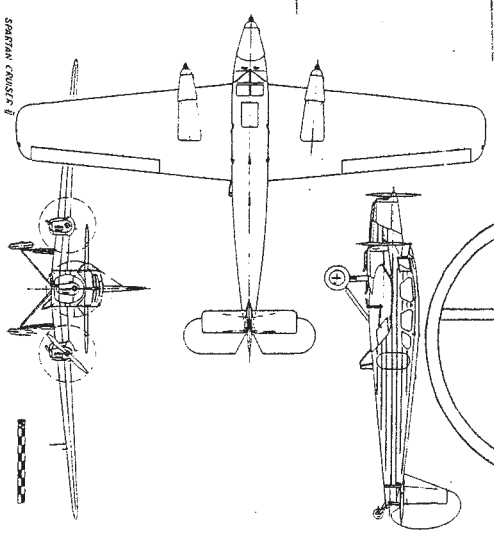
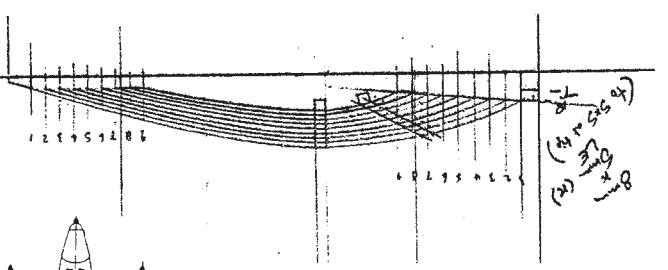
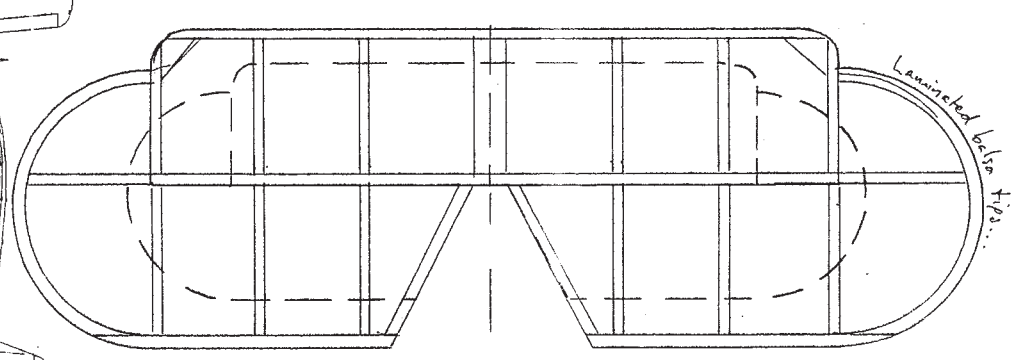


Outer engine nacelles made of sheet balsa + fitted with free-wheel balsa props.



Medial slightly greater than scale is recommended (I think mine didn't have quite enough!)

Original wing built in one piece and held to fuselage with rubber bands - use your own favorite method.

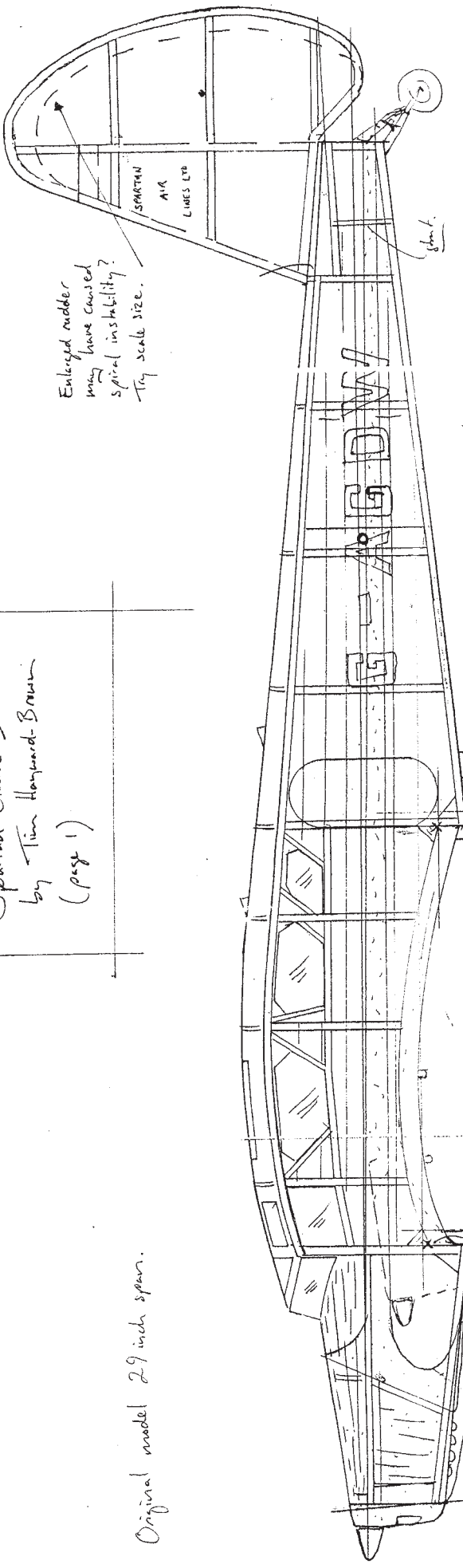


SPARTAN CRUISER II



Spartan Cruiser II
by Tim Hayward-Brown
(page 1)

Original model 29 inch span.



Enlarged rudder may have caused spiral instability?
Try scale size.

Main 1/2 leg glued between centre section of wing.

outer legs glued to wing ribs

axle from main legs free to move - not attached to outer legs.

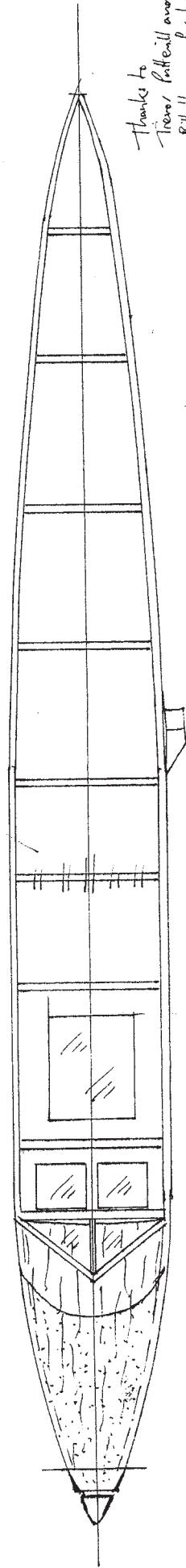
lubber fairings on wire legs.

spats on some Cruisers but not on CDW.

Colour line

Colour scheme:
All over silver.
Black engine cowls, fuselage stripe and fuselage registration.
Wing registration in blue.
(Museum colour possible)

stringers along noseleg top - not shown for clarity.



Thanks to Trevor Pittell and Bill Hanson for help with documentation.

Lengthen 1/2 leg a bit for ROG capability depending on prop size.

typical top former - stringers laid over, not notched

