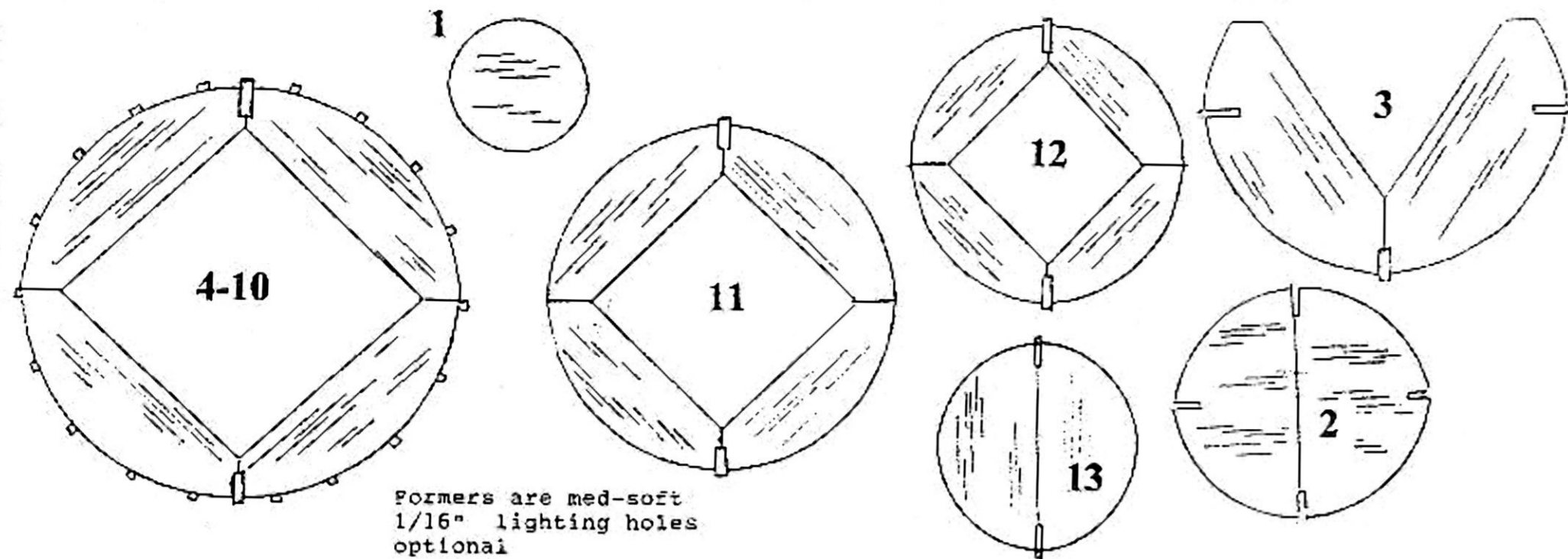
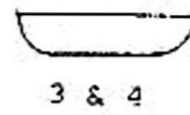


Dehavilland DASH-8

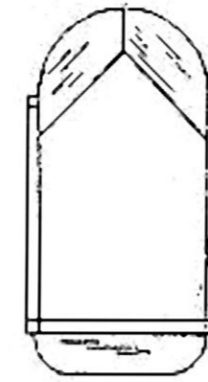
- 32" Wingspan for Rubber Powered Free Flight
- Prototype weight 77 grams without rubber
- Designed and drawn by Chris Starleaf 1996



Formers are med-soft
1/16" lighting holes
optional



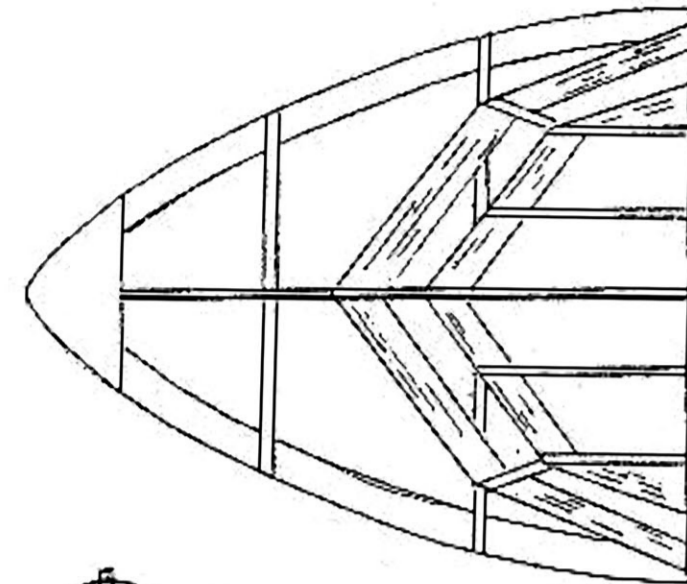
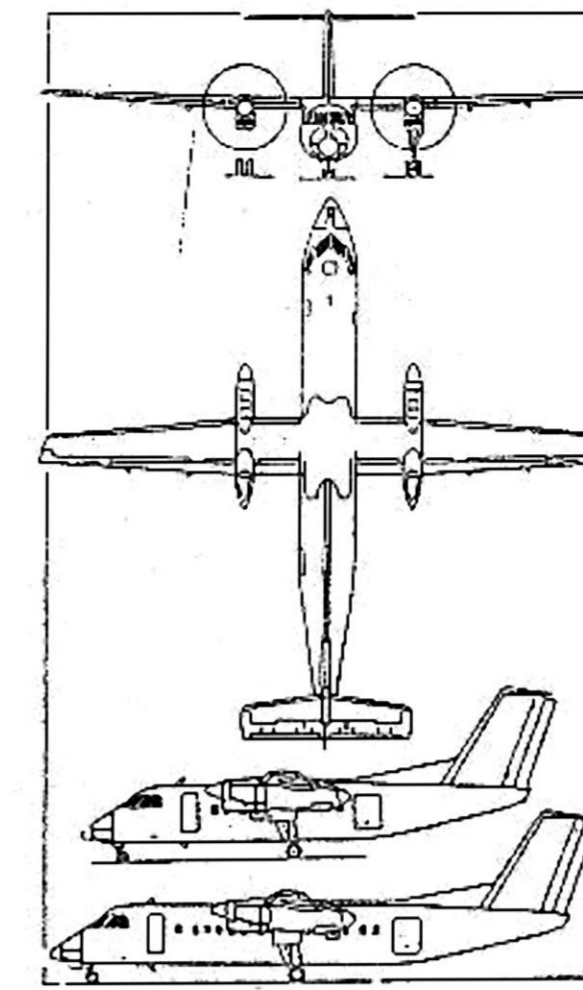
3 & 4



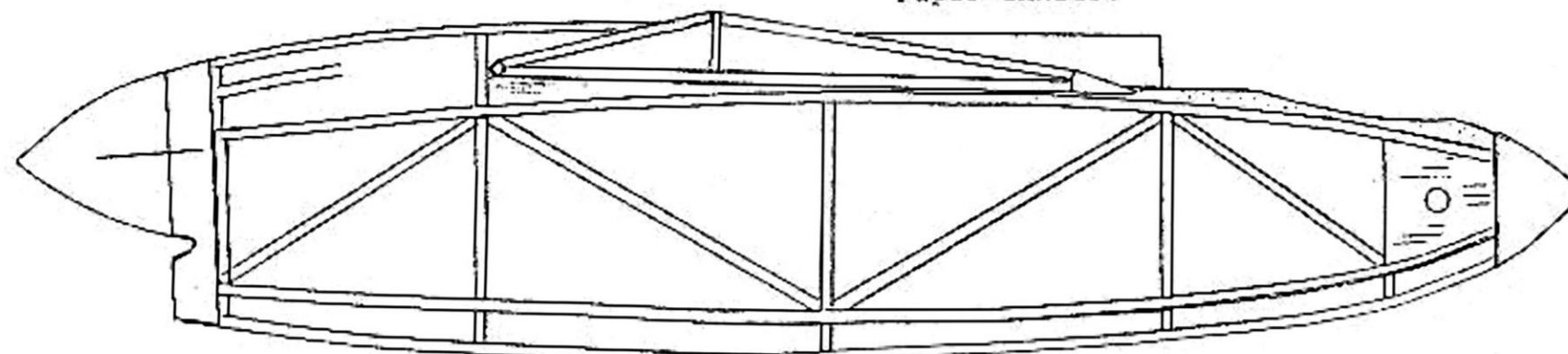
station 2



station 1

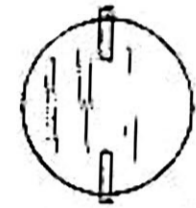


spun balsa spinner



Paper exhaust

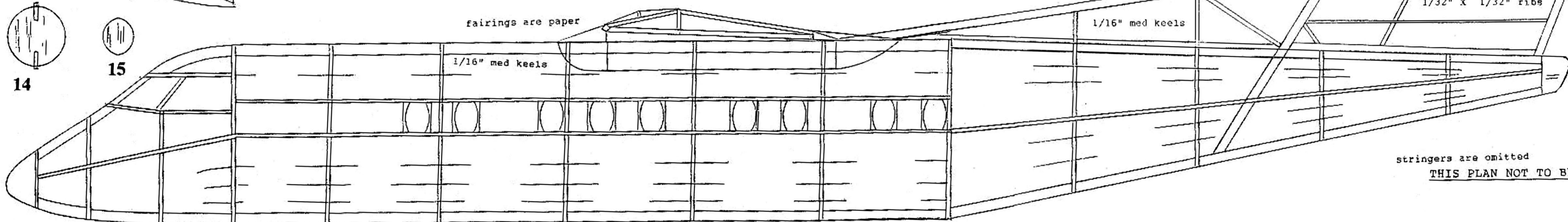
Left & Right Nacelles are identical



14



15



fairings are paper

1/16" med keels

1/16" med keels

1/32" X 1/32" ribs

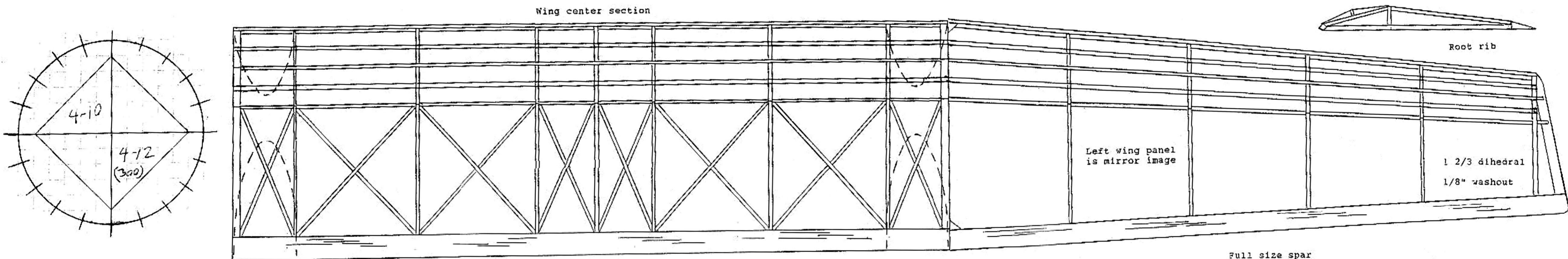
stringers are omitted

THIS PLAN NOT TO BE COPIED FOR RESALE

Nose soft balsa

1/16" soft rudder cap

1/16" soft rudder spar



Wing center section

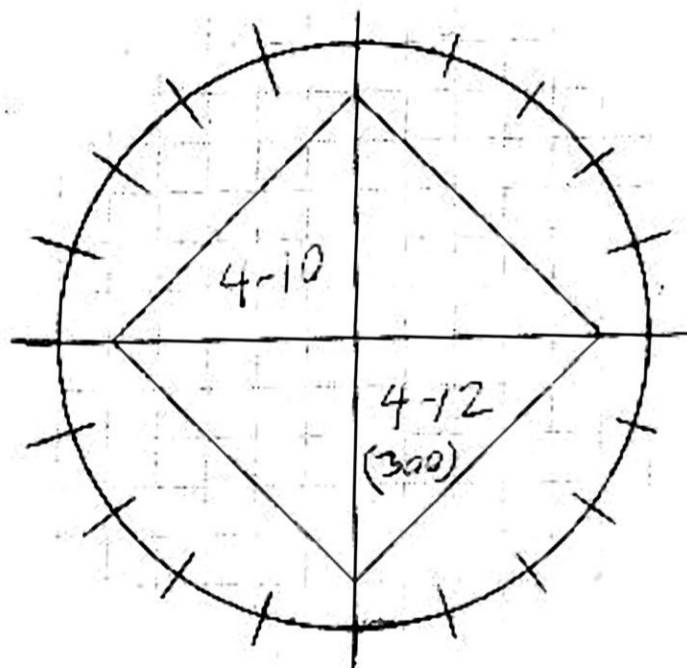


Root rib

Left wing panel
is mirror image

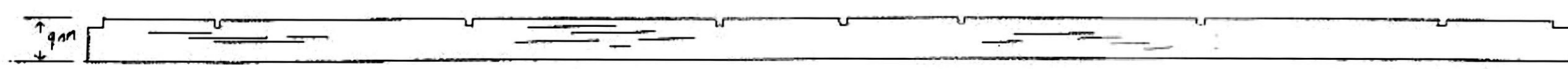
1 2/3 dihedral
1/8" washout

Full size spar



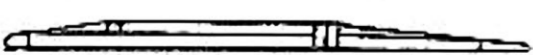
4-10

4-12
(300)



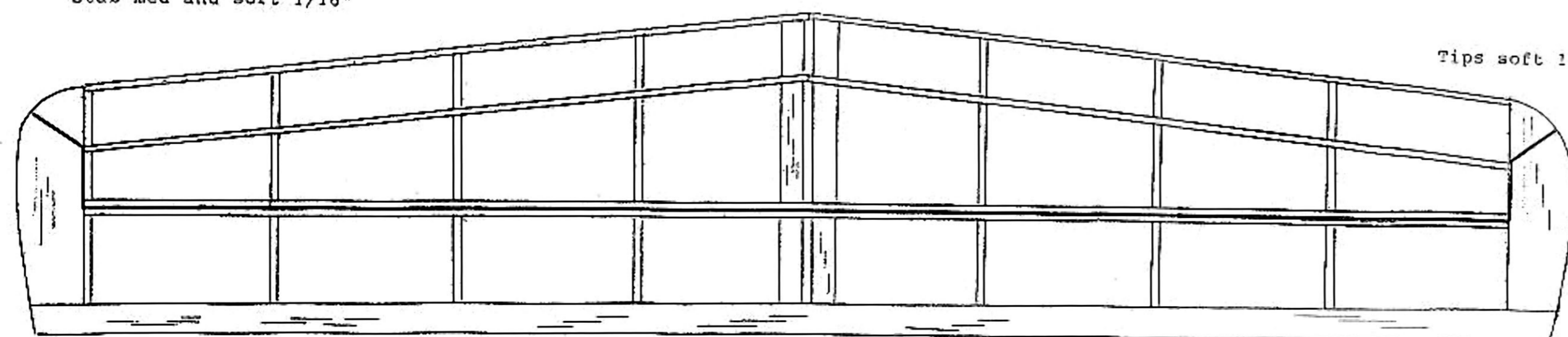
Full size spar 1/16 med.

Stab root cutaway

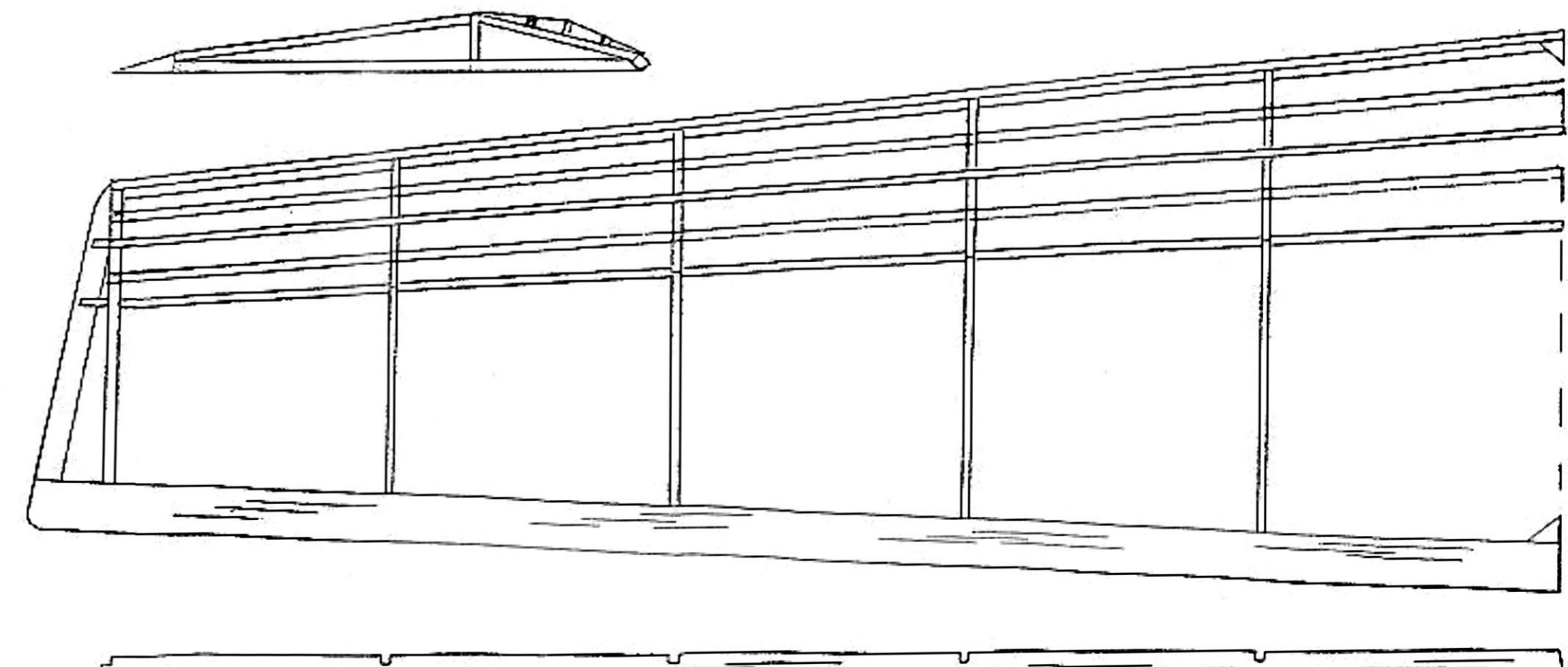


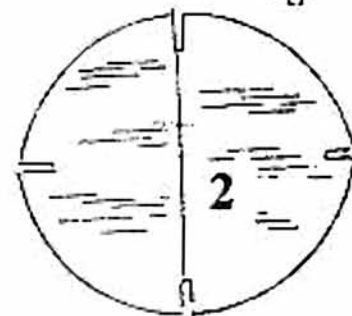
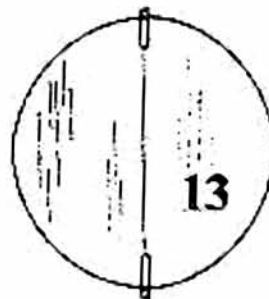
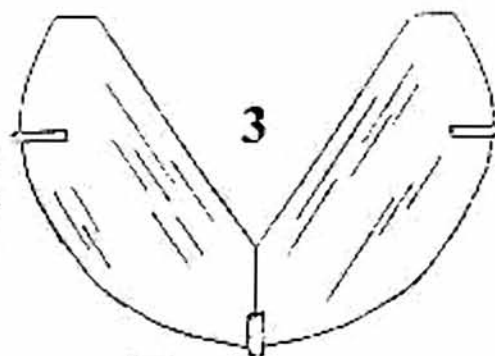
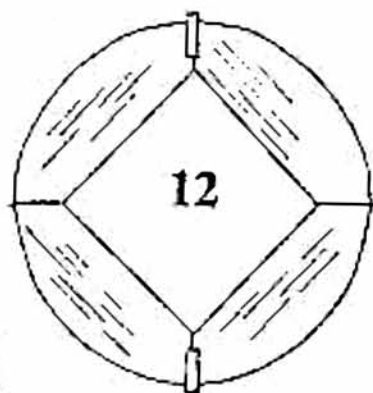
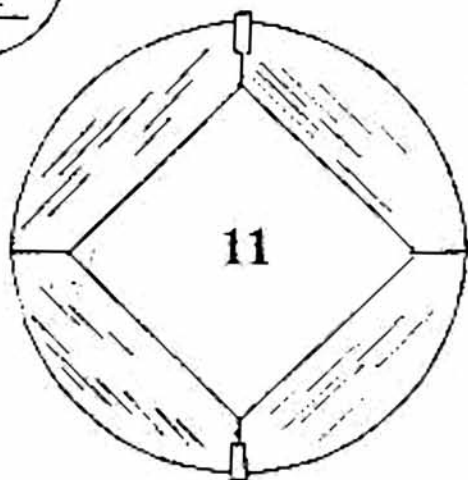
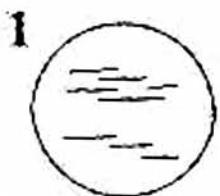
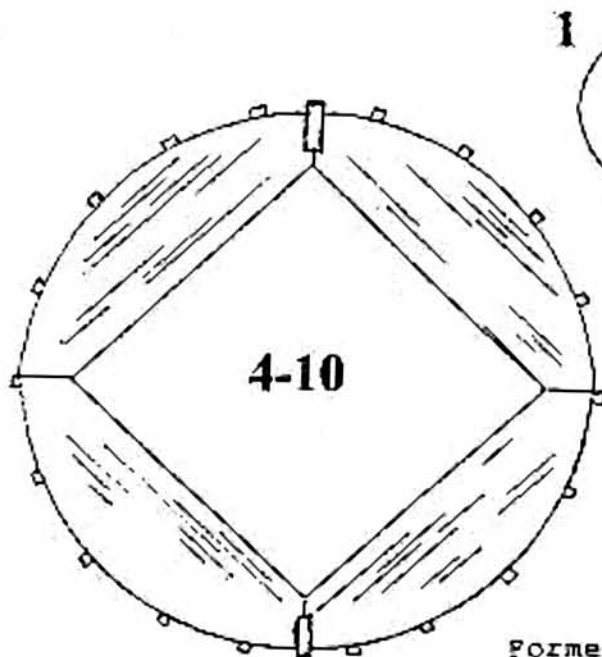
stab med and soft 1/16"

Stab must be hinged due to
the T-tail configuration and
the lack of any external braces

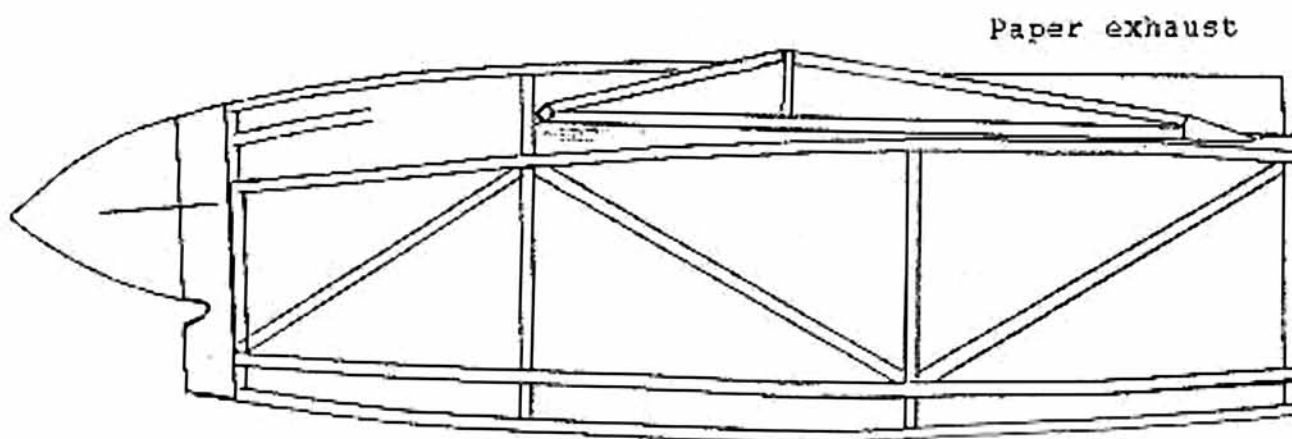
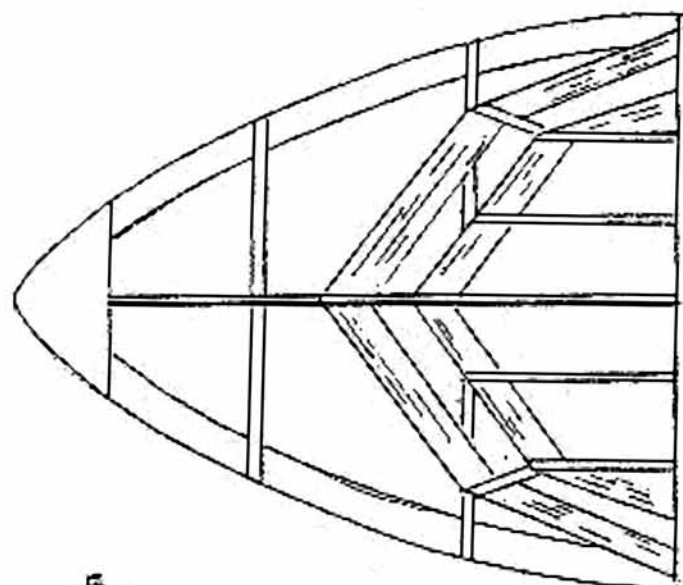


Tips soft 1/8"



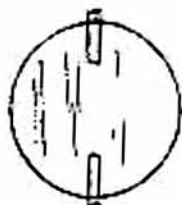


Formers are med-soft
1/16" lighting holes
optional



spun balsa spinner

Left & Right Nacelles are identical



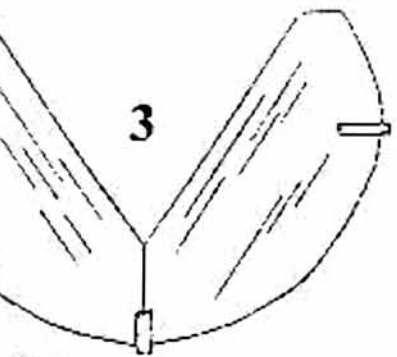
14

15

fairings are paper

1/16" med keels





3

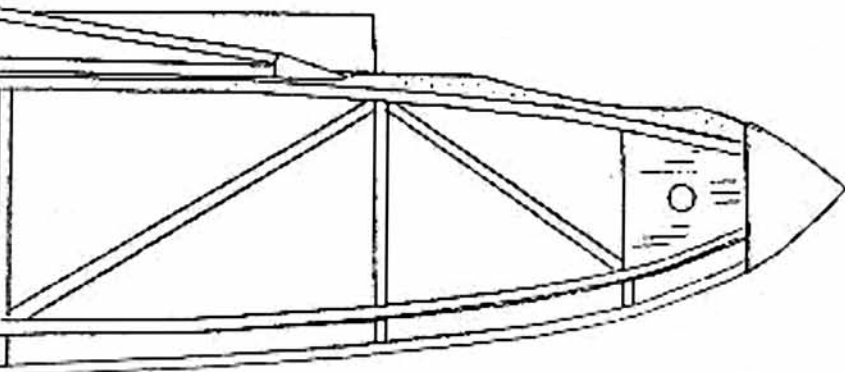


2



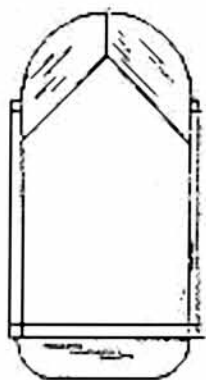
3 & 4

Paper exhaust

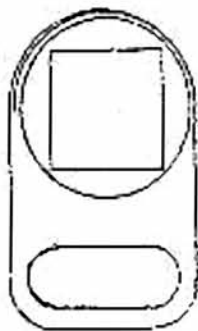


les are identical

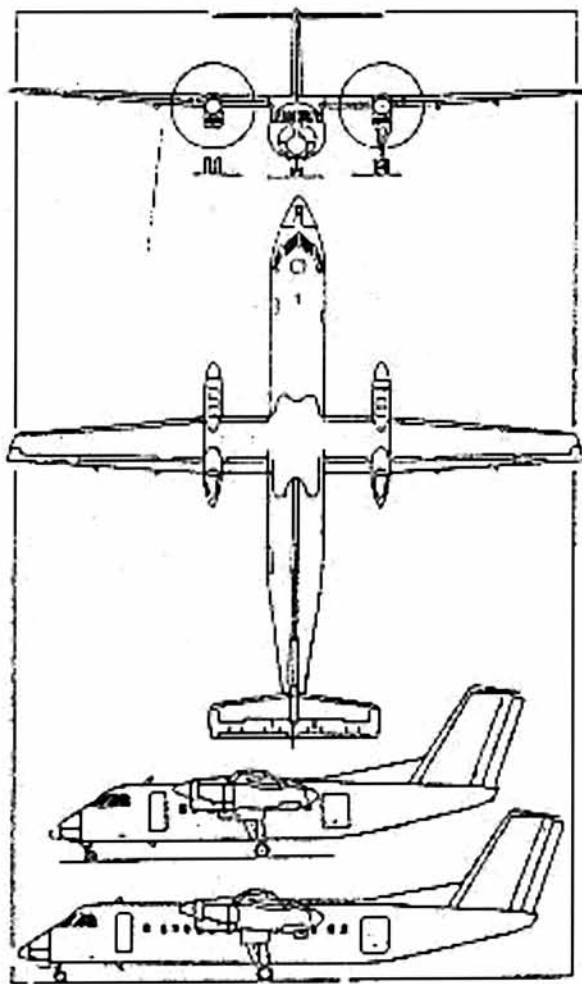
per



station 2

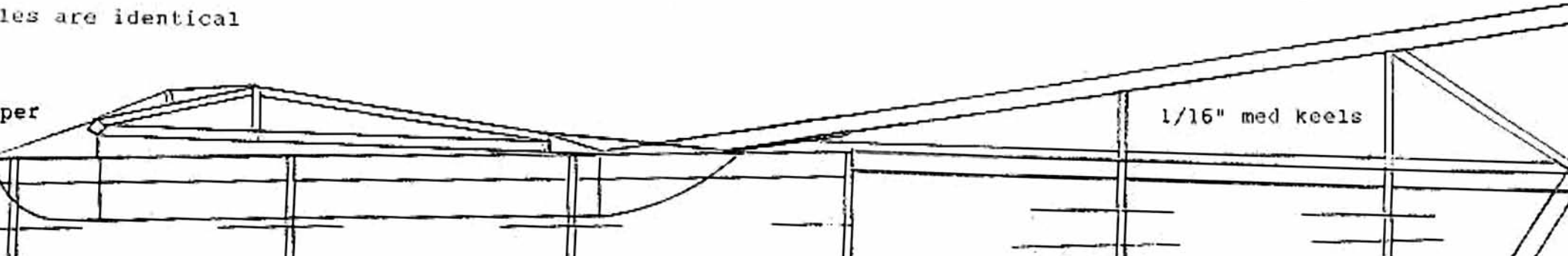


station 1



les are identical

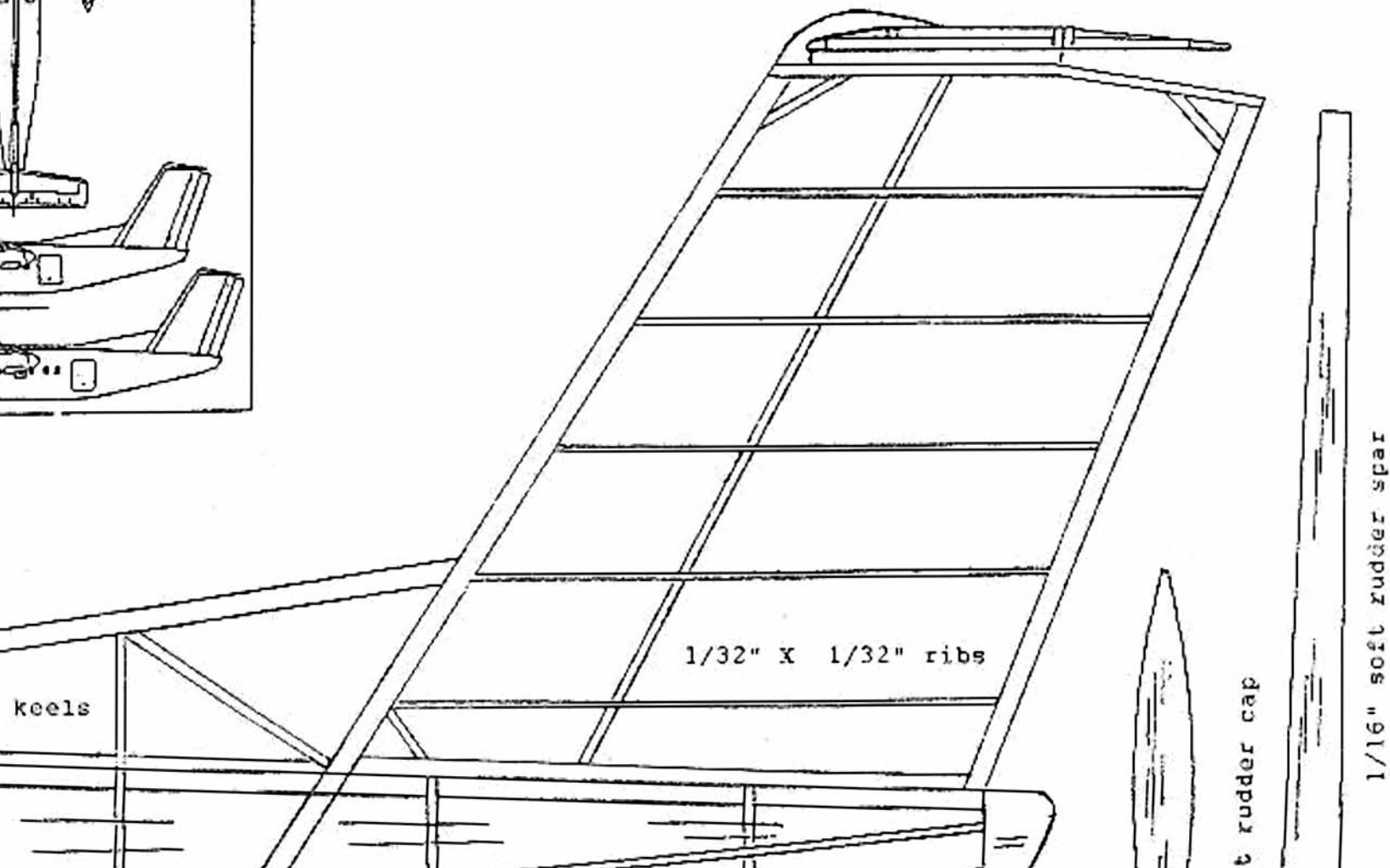
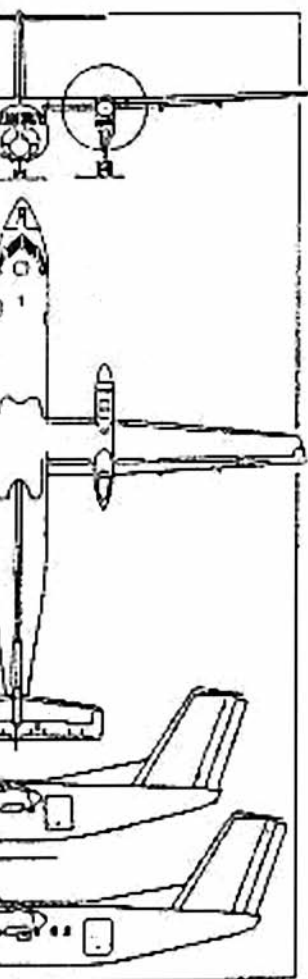
per



1/16" med keels

Dehavilland DASH-8

- 32" Wingspan for Rubber Powered Free Flight
- Prototype weight 77 grams without rubber
- Designed and drawn by Chris Starleaf 1996



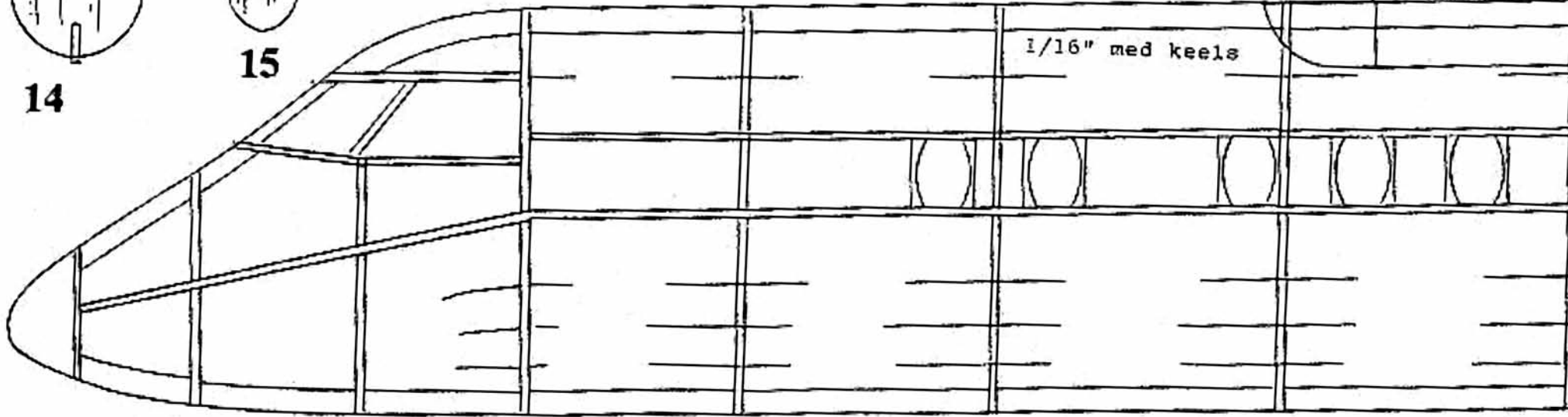
rairings are paper



14

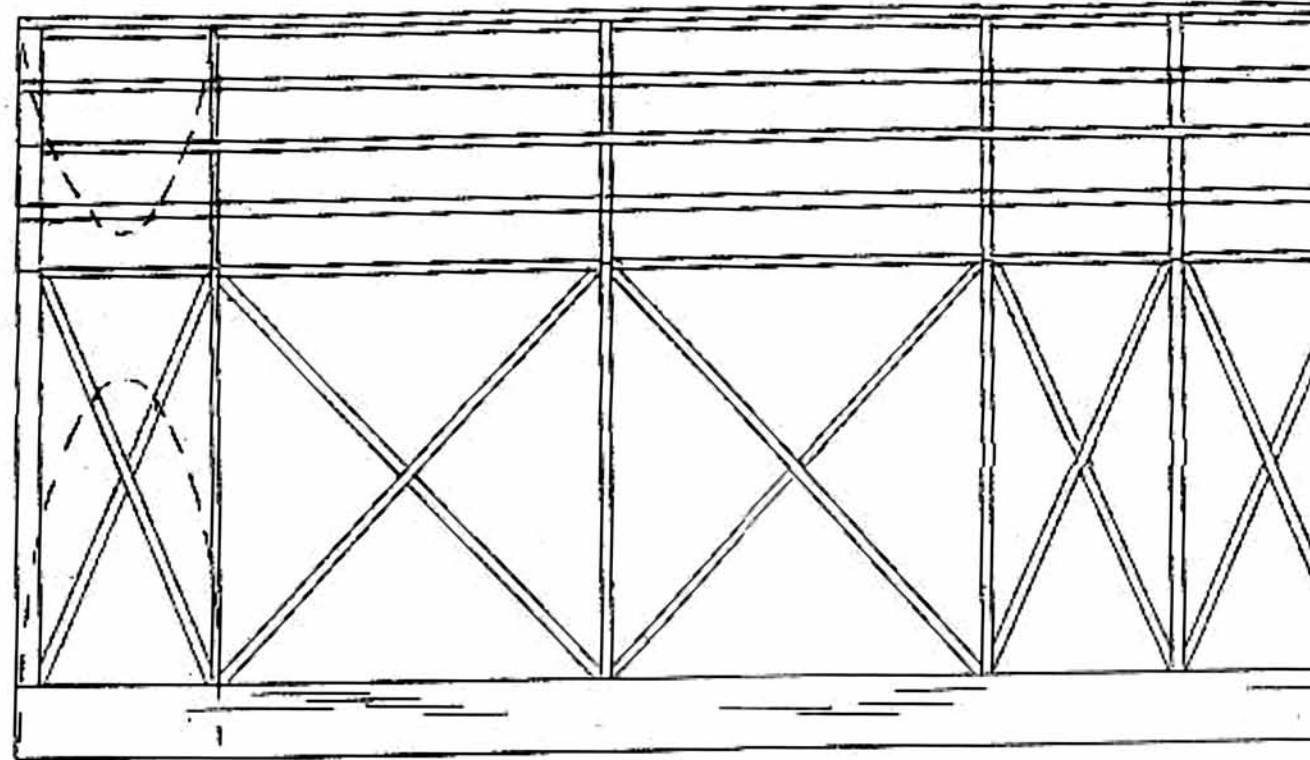
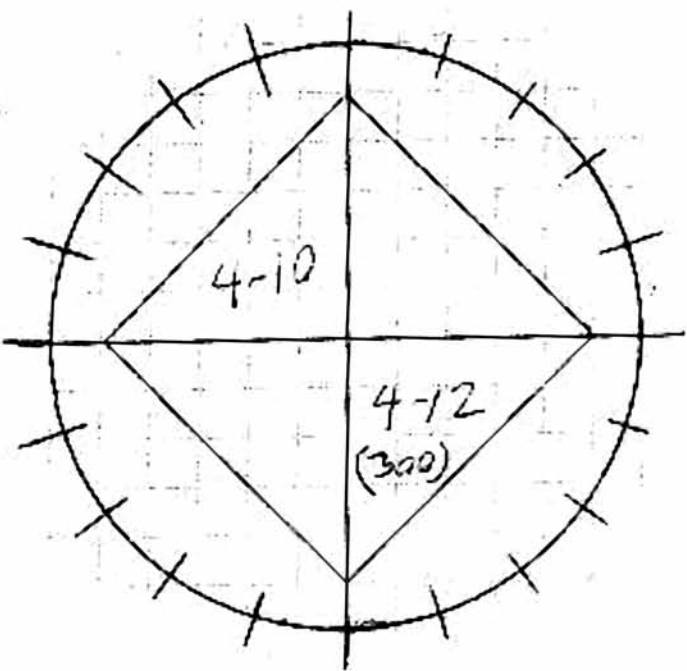


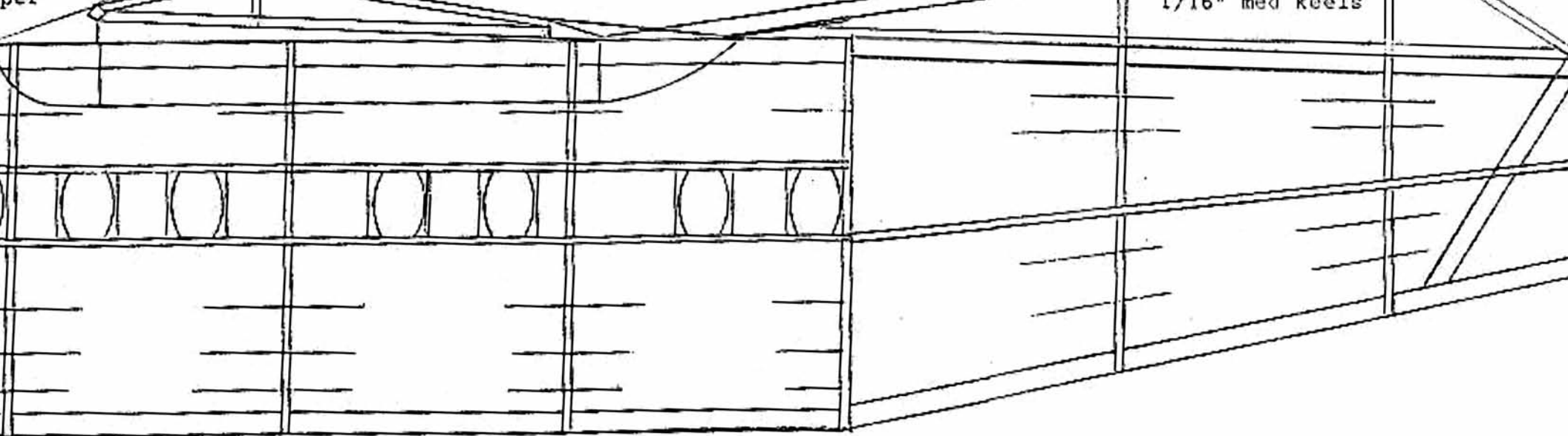
15



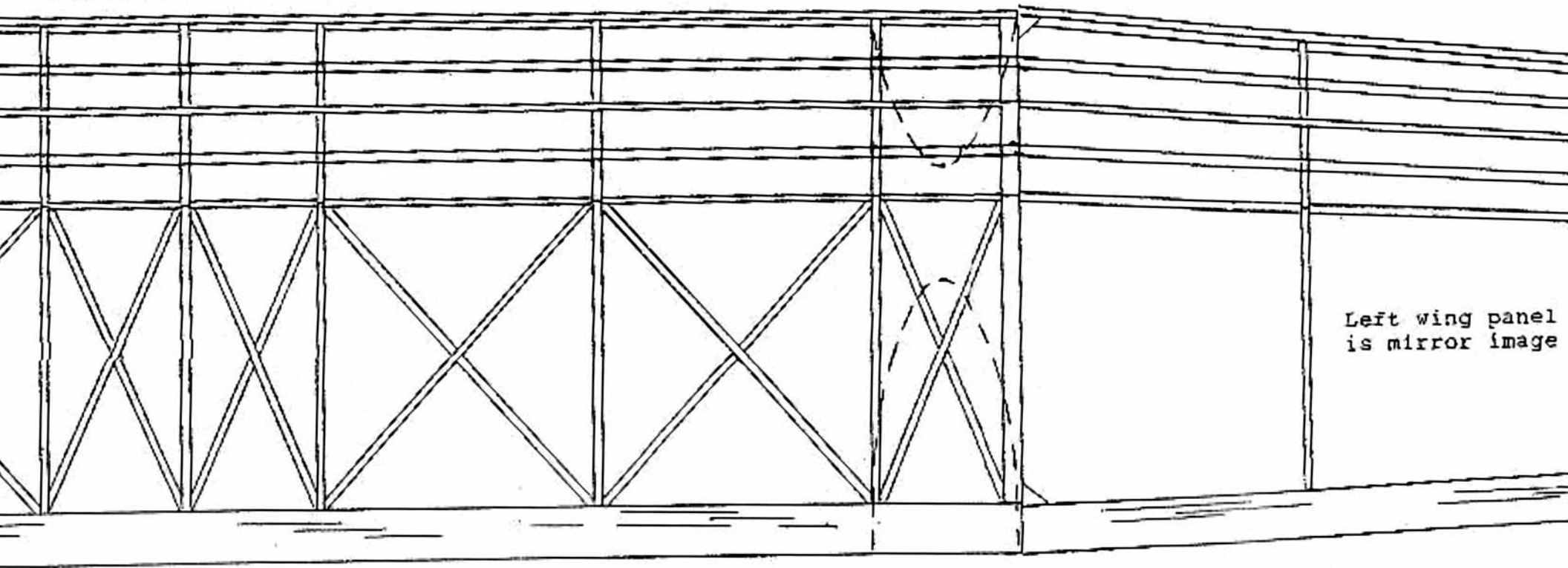
Nose soft balsa

Wing center secti

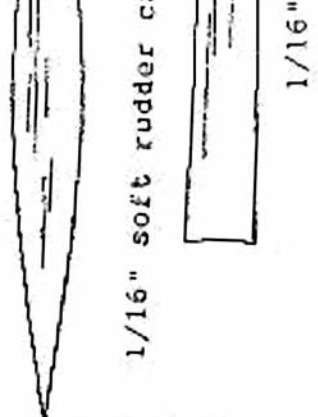
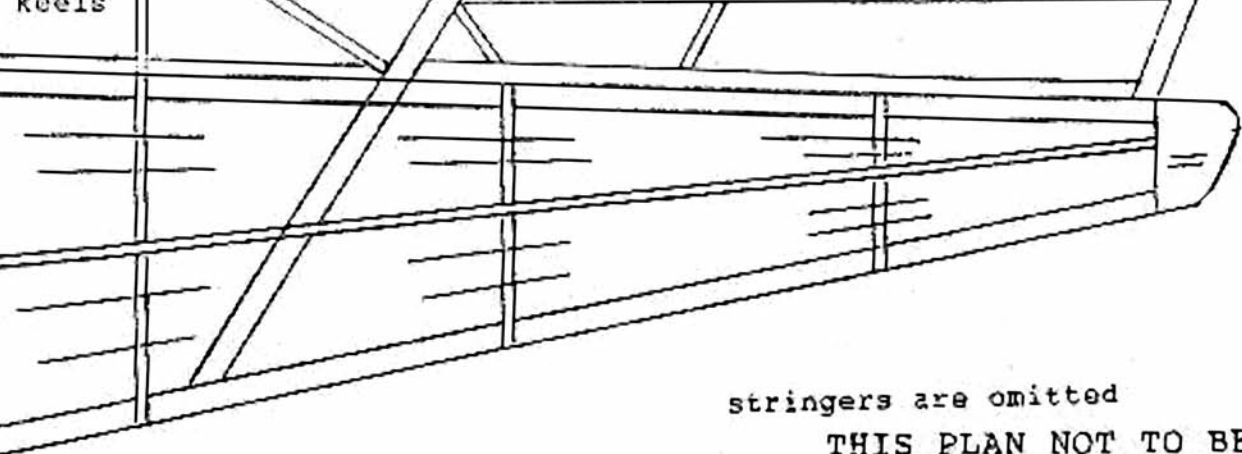




Wing center section



↑
900

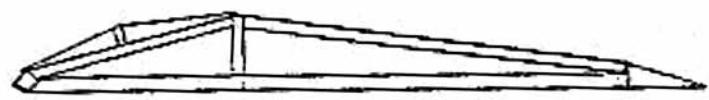


1/16" soft rudder c

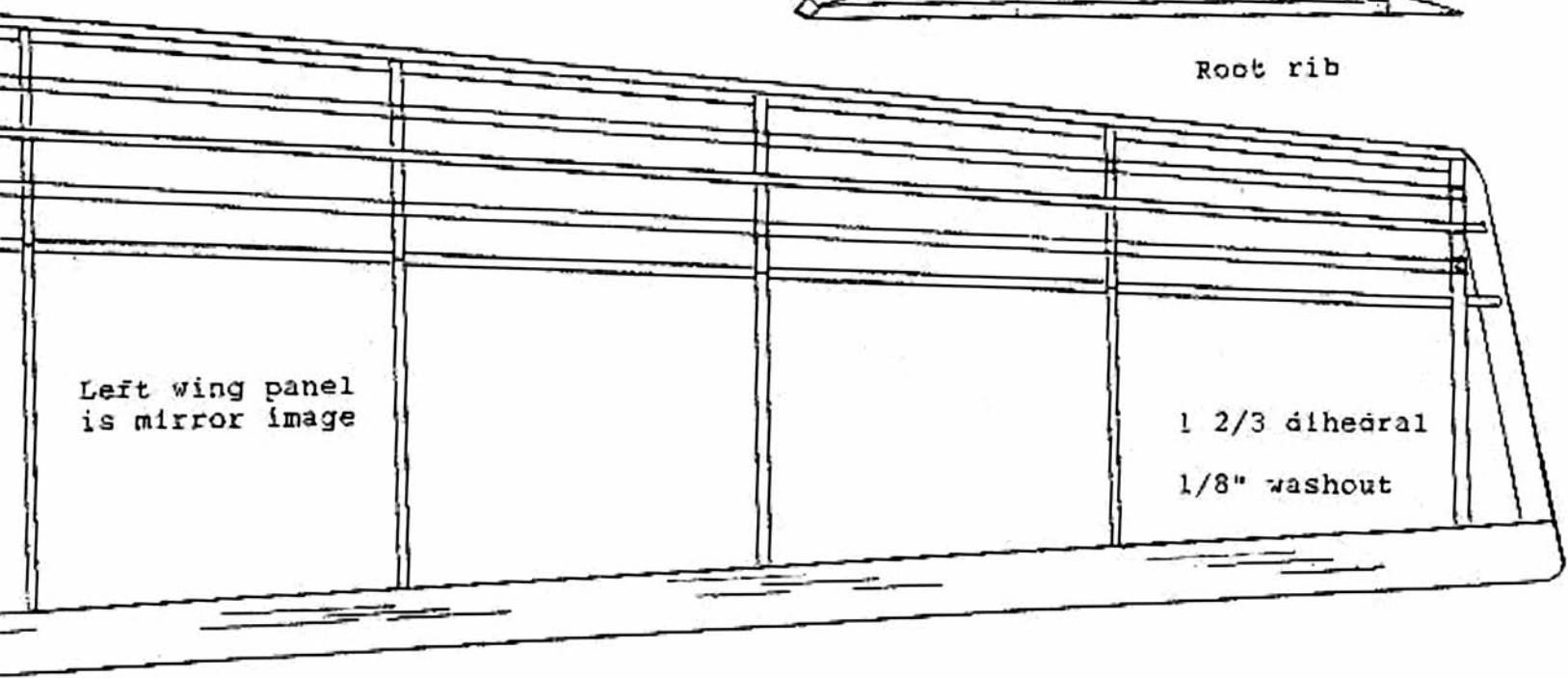
1/16"

stringers are omitted

THIS PLAN NOT TO BE COPIED FOR RESALE



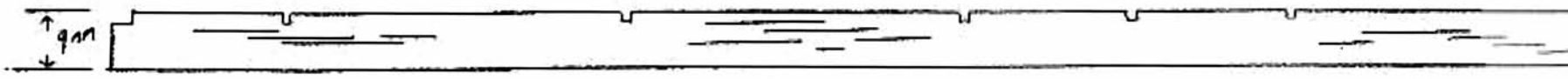
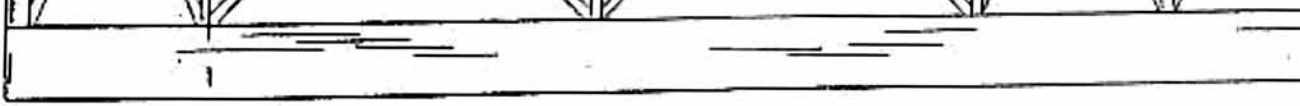
Root rib



Left wing panel is mirror image

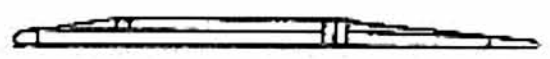
1 2/3 aluminum
1/8" washout

Full size spar



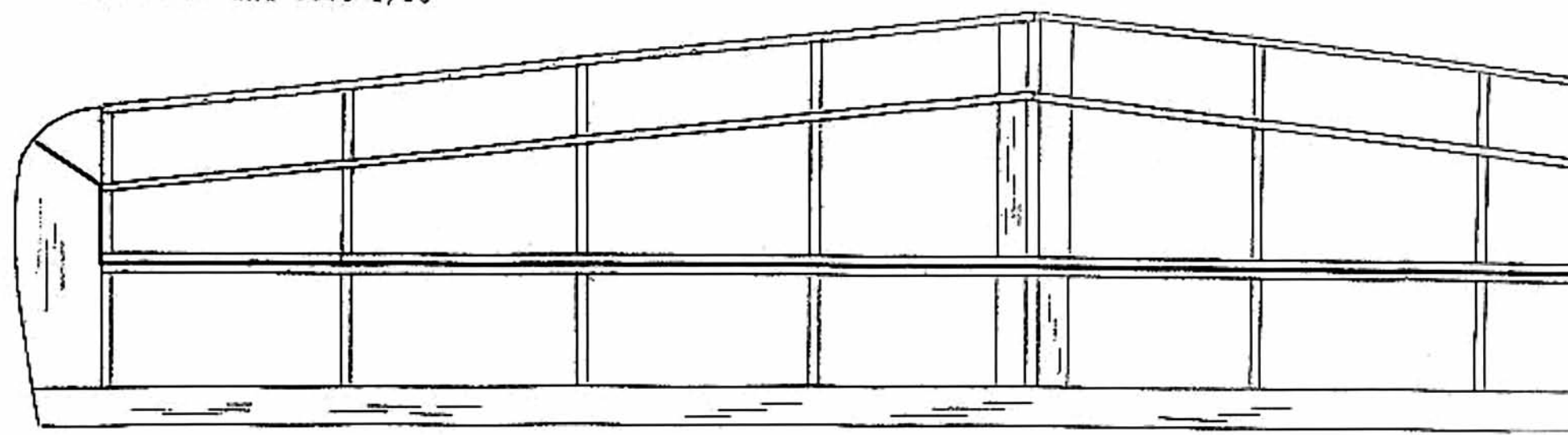
Full size spar 1/16 med.

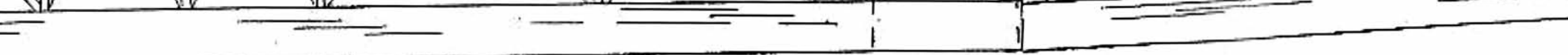
Stab root cutaway



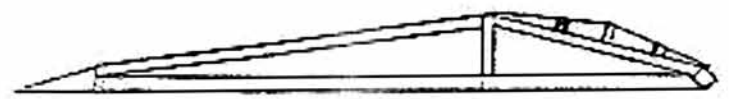
stab med and soft 1/16"

Stab must be hinged due to the T-tail configuration and the lack of any external brace



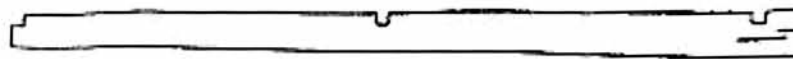
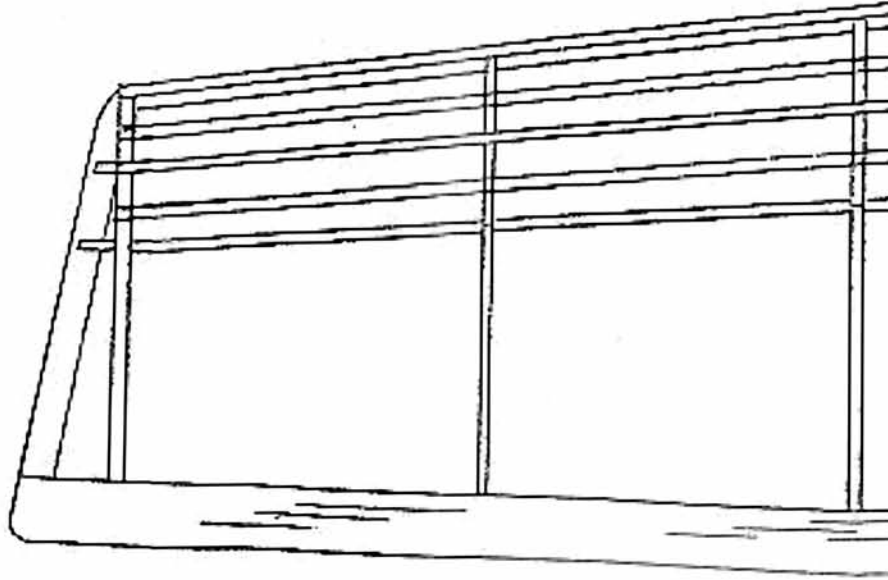
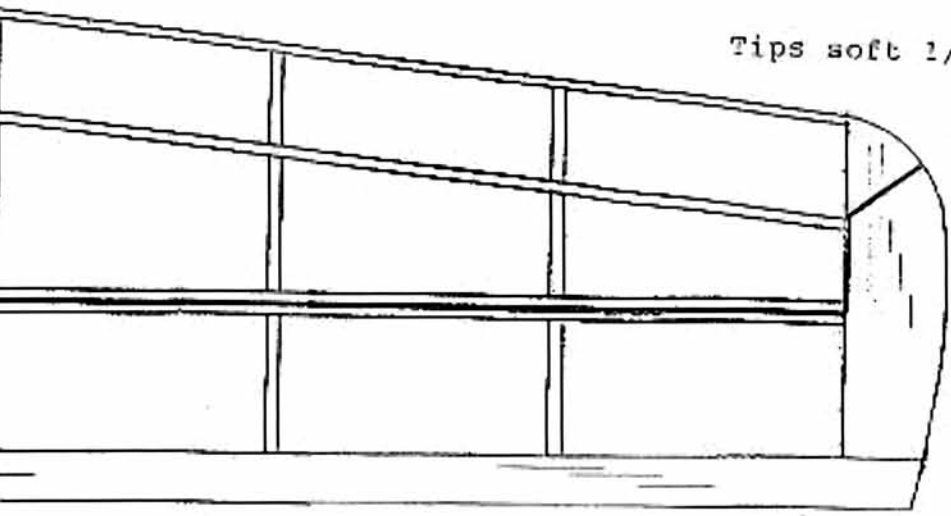


9mm



st be hinged due to
oil configuration and
of any external braces

Tips soft 1/8"



Full size spar

