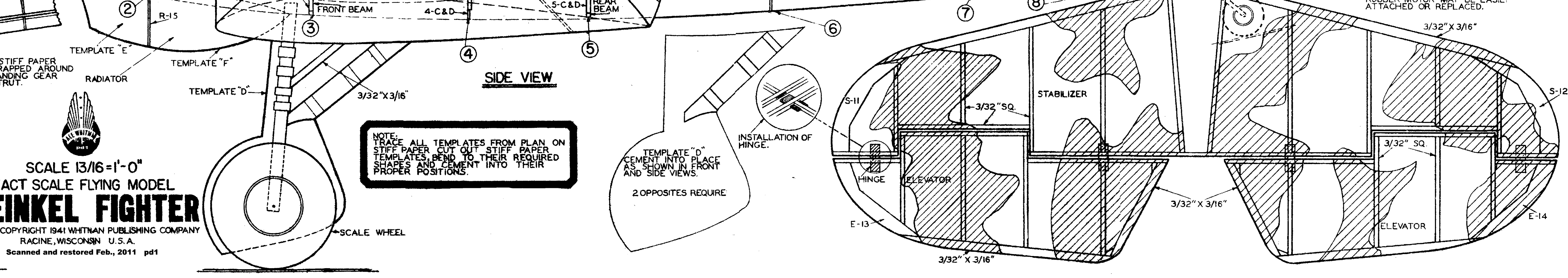
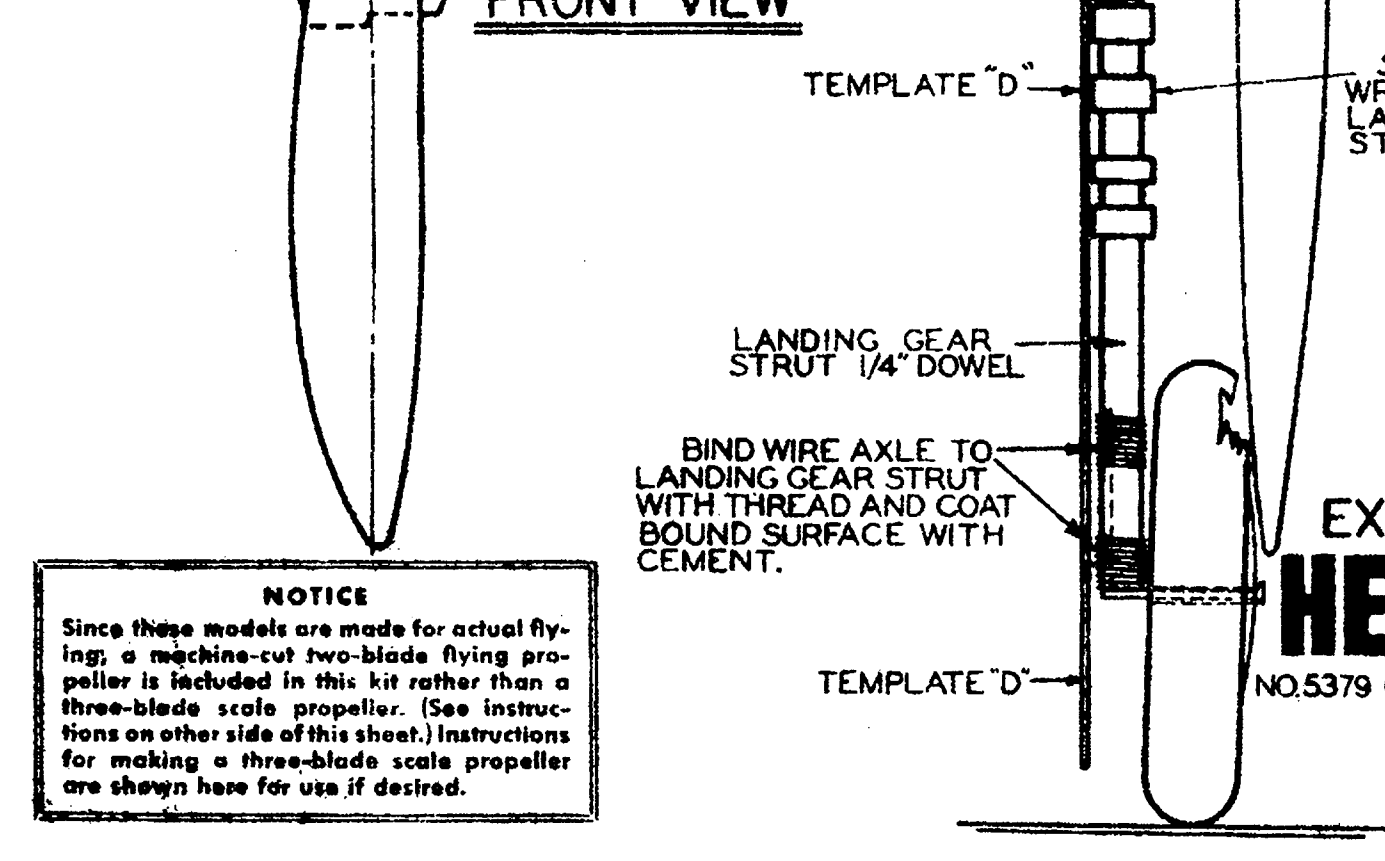
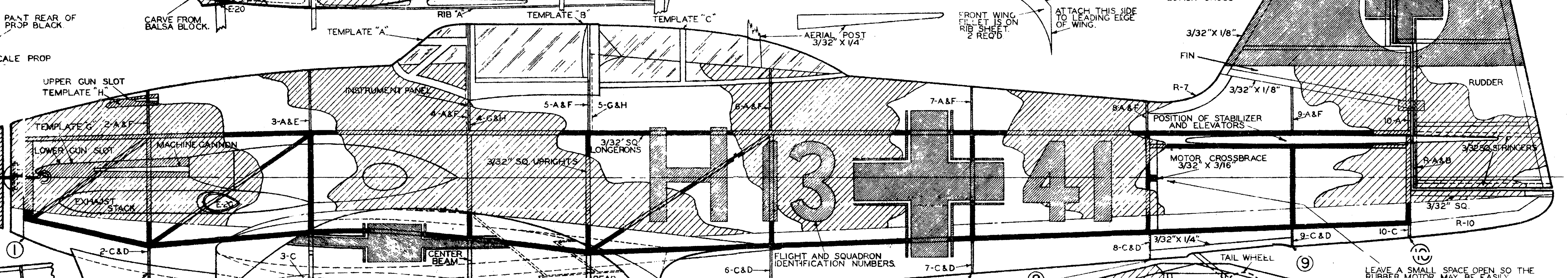
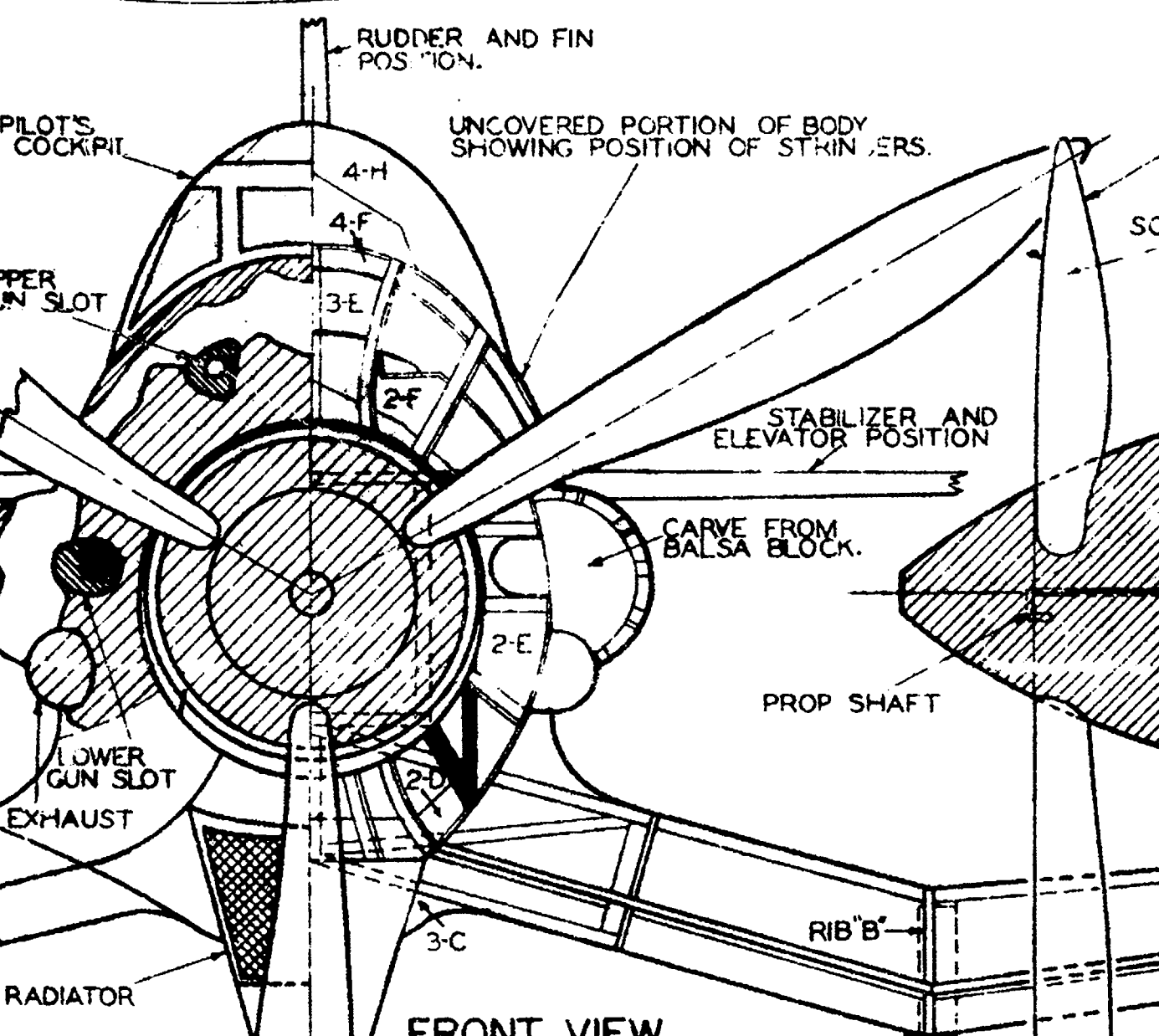
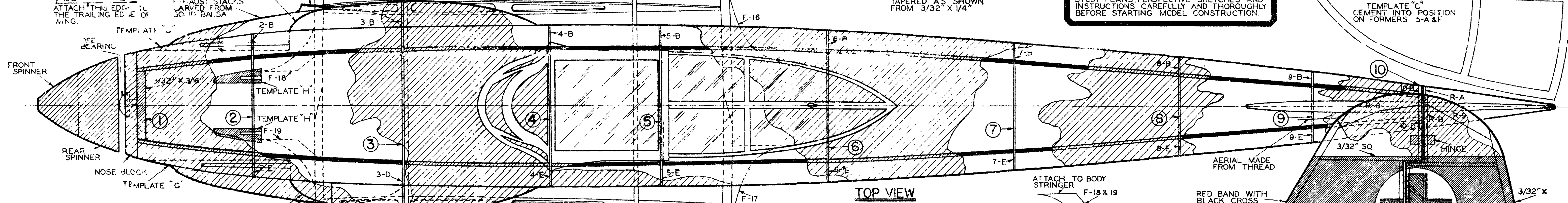
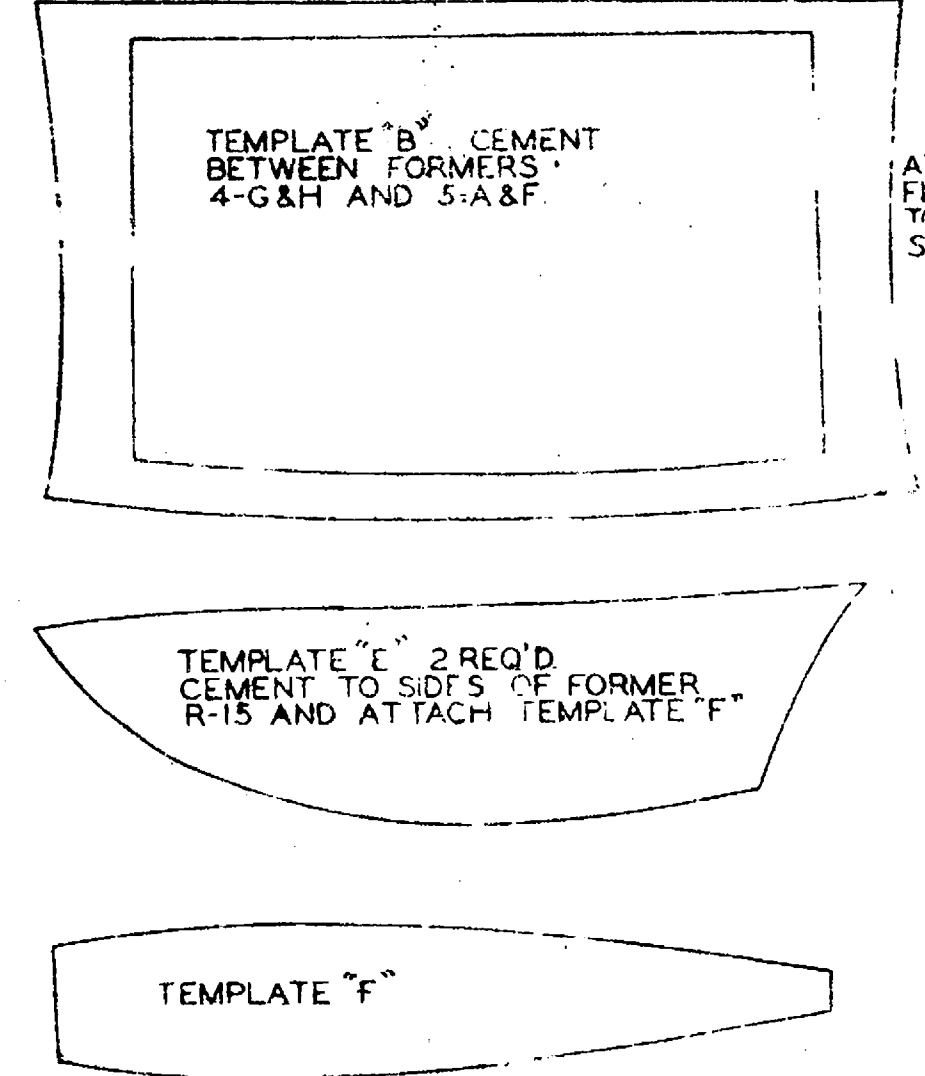
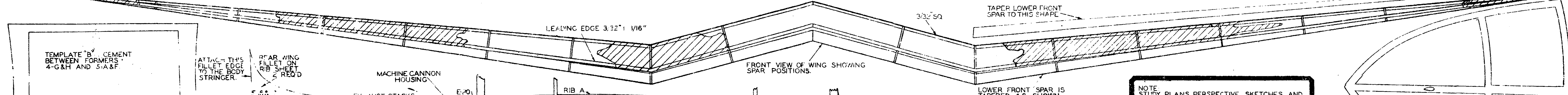


NOTE: WING MUST BE ATTACHED TO MODEL BEFORE BOTTOM BODY STRINGERS ARE INSERTED. SPACE RIBS A-A VERY ACCURATELY WHEN WING IS ASSEMBLED TO ASSURE PROPER LINE UP WHEN ENTIRE WING IS ATTACHED TO BODY. THE CENTER WING BEAMS, FRONT, CENTER AND REAR MUST BE ATTACHED TO BODY BEFORE WING IS CEMENTED IN PLACE. DO NOT COVER WING UNTIL IT IS CEMENTED TO BODY.

NOTE: STUDY PLANS, PERSPECTIVE SKETCHES AND INSTRUCTIONS CAREFULLY AND THOROUGHLY BEFORE STARTING MODEL CONSTRUCTION.



NOTE: ALL TEMPLATES FROM PLAN ON STIFF PAPER. CUT OUT STIFF PAPER TEMPLATES, BEND TO THEIR REQUIRED SHAPES AND CEMENT INTO THEIR PROPER POSITIONS.

TEMPLATE "D" CEMENT INTO PLACE AS SHOWN IN FRONT AND SIDE VIEWS. 2 OPPOSITES REQUIRE.

LEAVE A SMALL SPACE OPEN SO THE RUBBER MOTOR MAY BE EASILY ATTACHED OR REPLACED.

SCALE 13/16"=1'-0"  
**EXACT SCALE FLYING MODEL**  
**HEINKEL FIGHTER**  
 NO.5379 COPYRIGHT 1941 WHITMAN PUBLISHING COMPANY  
 RACINE, WISCONSIN U.S.A.  
 Scanned and restored Feb., 2011 pdf

NOTICE: Since these models are made for actual flying, a machine-cut two-blade flying propeller is included in this kit rather than a three-blade scale propeller. (See instructions on other side of this sheet.) Instructions for making a three-blade scale propeller are shown here for use if desired.