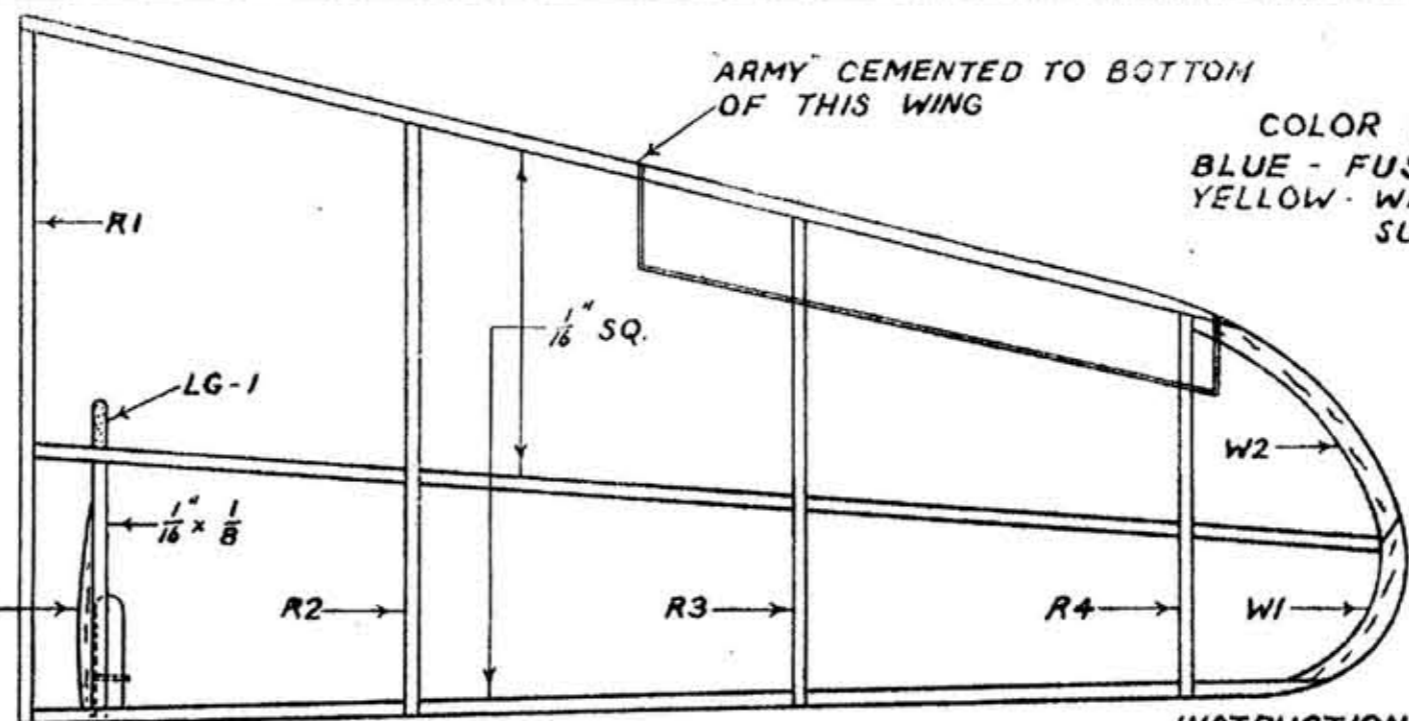
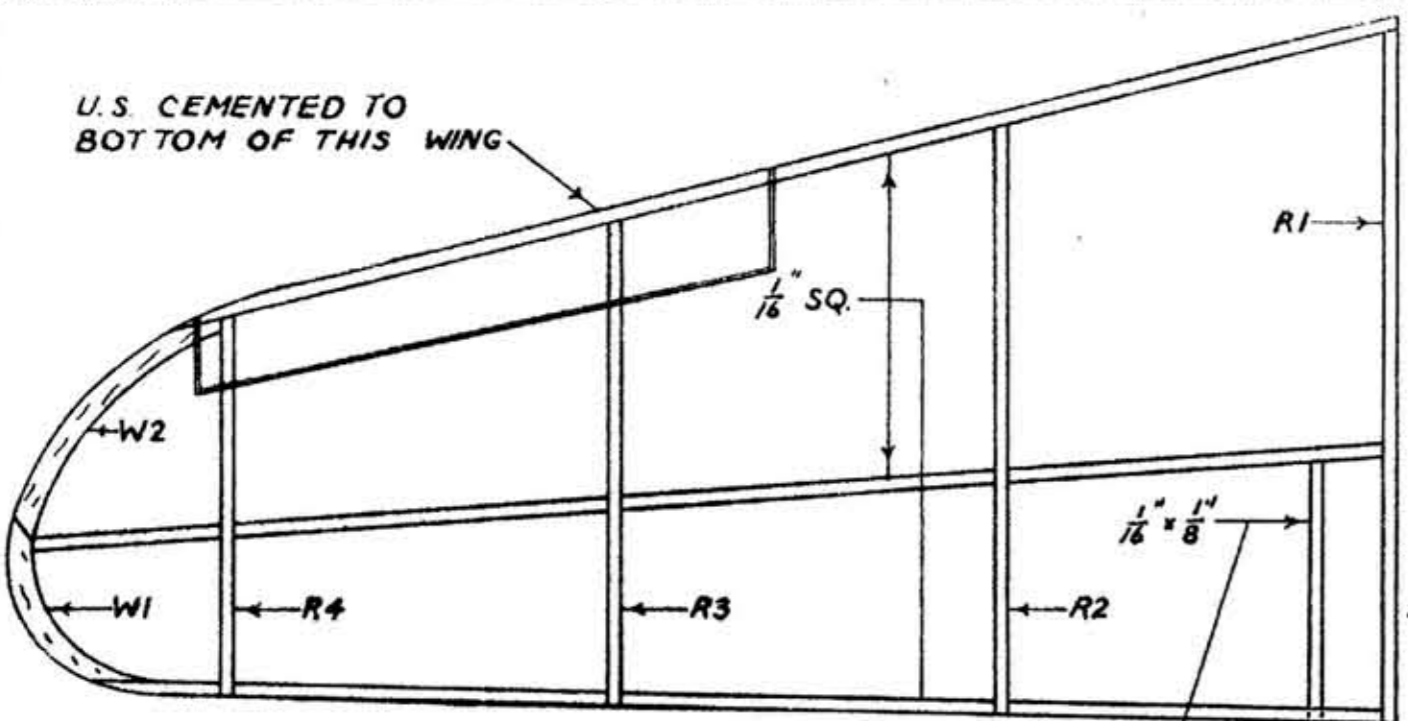
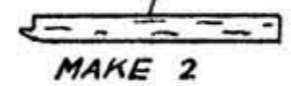
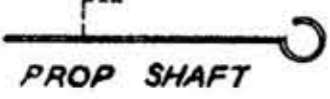


# U.S. ARMY



COLOR SCHEME  
 BLUE - FUSELAGE  
 YELLOW - WINGS, TAIL SURFACES.

1" DIHEDRAL

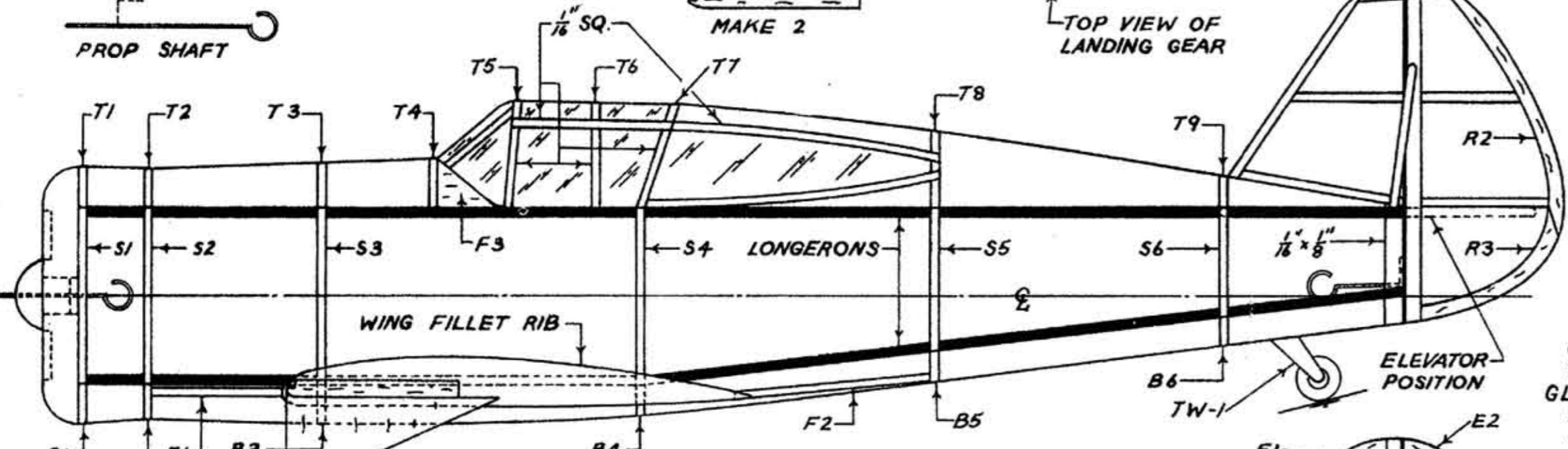


TOP VIEW OF LANDING GEAR

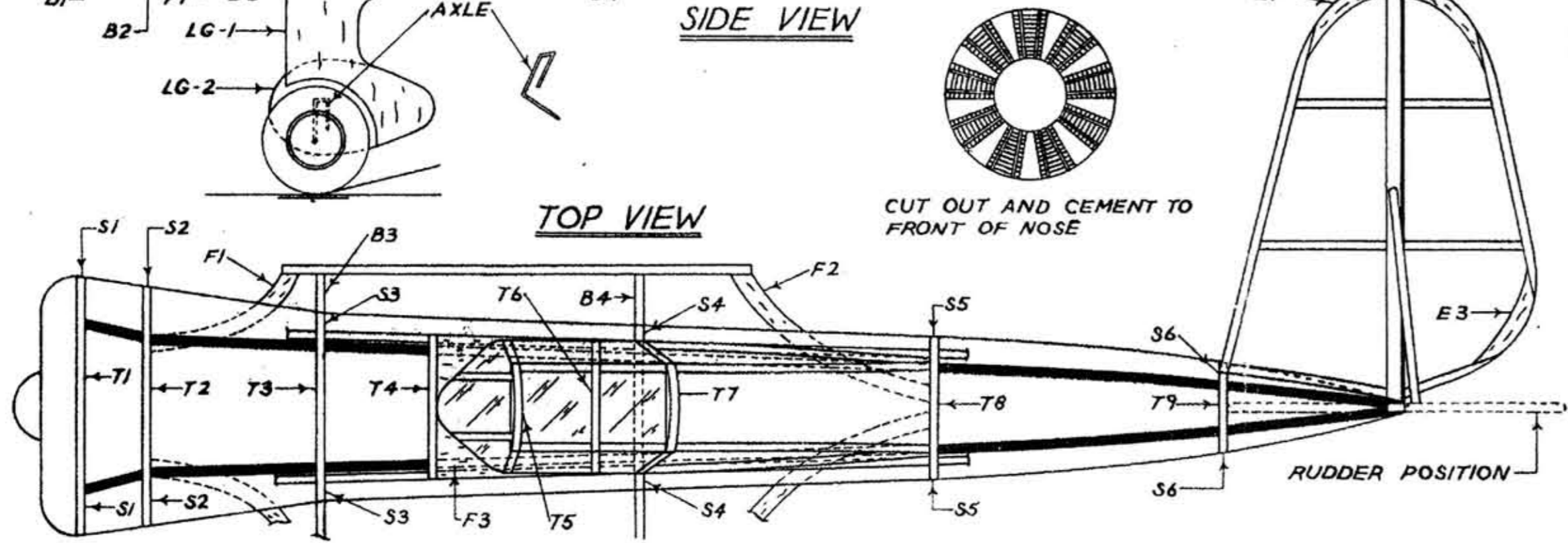
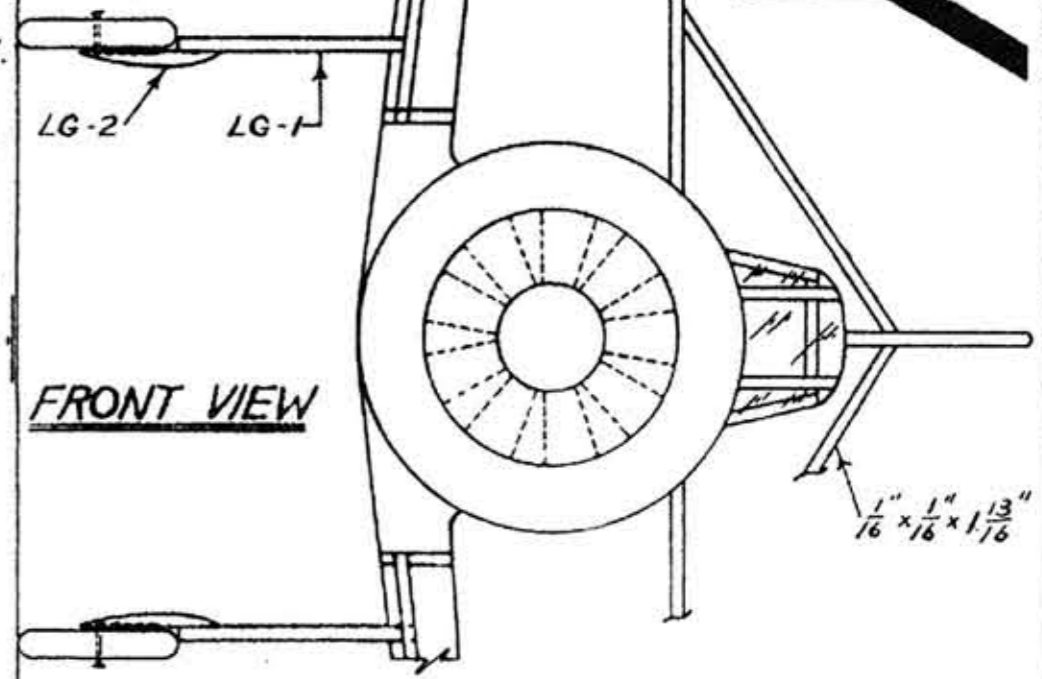
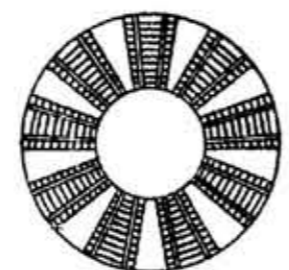
**INSTRUCTION**

STUDY PLANS CAREFULLY. CUT OUT PARTS FOR THE WING AND ASSEMBLE AS SHOWN. LAY OUT SIDES OF FUSELAGE ON SHADED LONGERONS SHOWN ON SIDE VIEW. WHEN TWO SIDES HAVE BEEN MADE CEMENT THEM TOGETHER WITH CROSSBRACES IN PROPER PLACES. CUT OUT FUSELAGE FORMERS AND CEMENT TO FUSELAGE. ADD STRINGERS. CUT OUT PARTS OF TAIL SURFACES AND ASSEMBLE AS SHOWN. CUT OUT LANDING GEAR PARTS. COVER ENTIRE MODEL. ASSEMBLE MODEL BEING CAREFUL THAT PARTS ARE CEMENTED INTO THEIR PROPER PLACE. GLIDE MODEL, IF IT DIVES WARP ELEVATORS UP, IF IT STALLS WARP ELEVATORS DOWN. WHEN THE MODEL GLIDES SMOOTHLY, WIND UP THE PROP AND LET HER GO.

CUT OUT AND CEMENT TO BOTTOM OF WINGS



SIDE VIEW



RUDDER POSITION

SMALL T ON FORMERS S1, 2, 3, 4, 5, AND S6 INDICATES THE TOP OF THE FORMER

CONTINENTAL  
 MODEL AIRPLANE CO.  
 BROOKLYN N.Y.  
**CURTISS HAWK "75"**  
 WING SPAN 15 INCHES  
 LENGTH-OVER-ALL 11 "  
 DRAWN BY - H. APPEL

