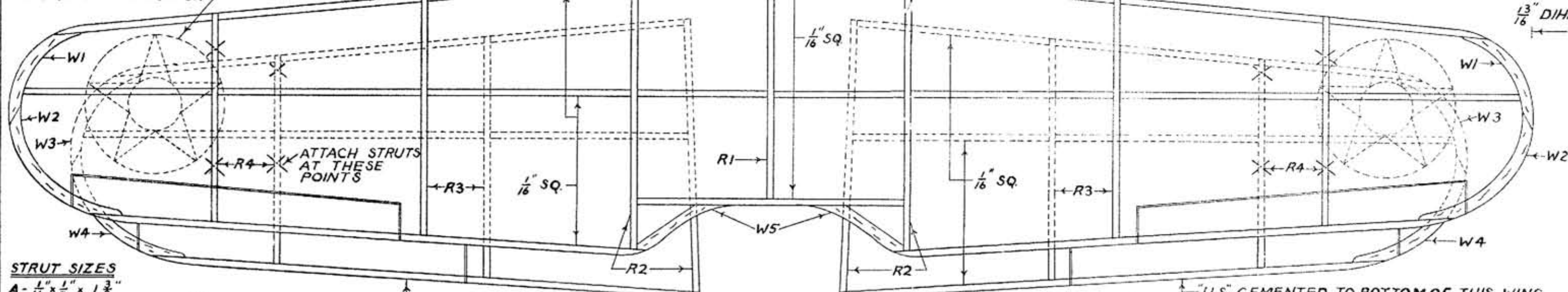


STARS CEMENTED TO BOTTOM OF LOWER WING IN SAME POSITION



- STRUT SIZES**
- A - 1/16" x 1/8" x 1 3/8"
 - B - " " " x 1 1/4"
 - C - " " " x 2 1/2"
 - D - " " " x 2 1/2"
 - E - " " " x 2 1/2"
 - F - " " " x 1 1/2"
 - G - " " " x 1 7/8"
 - H - " " " x 1 1/8"

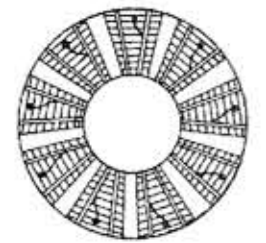


"NAVY" CEMENTED TO BOTTOM OF THIS WING

CONTINENTAL
 MODEL AIRPLANE CO.
 BROOKLYN N.Y.
VOUGHT DIVE BOMBER
 WING SPAN 15 INCHES
 LENGTH-OVER-ALL 11 3/16"
 DRAWN BY H APPEL

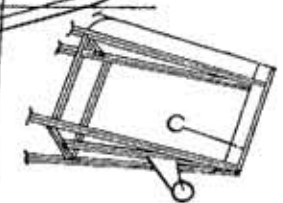
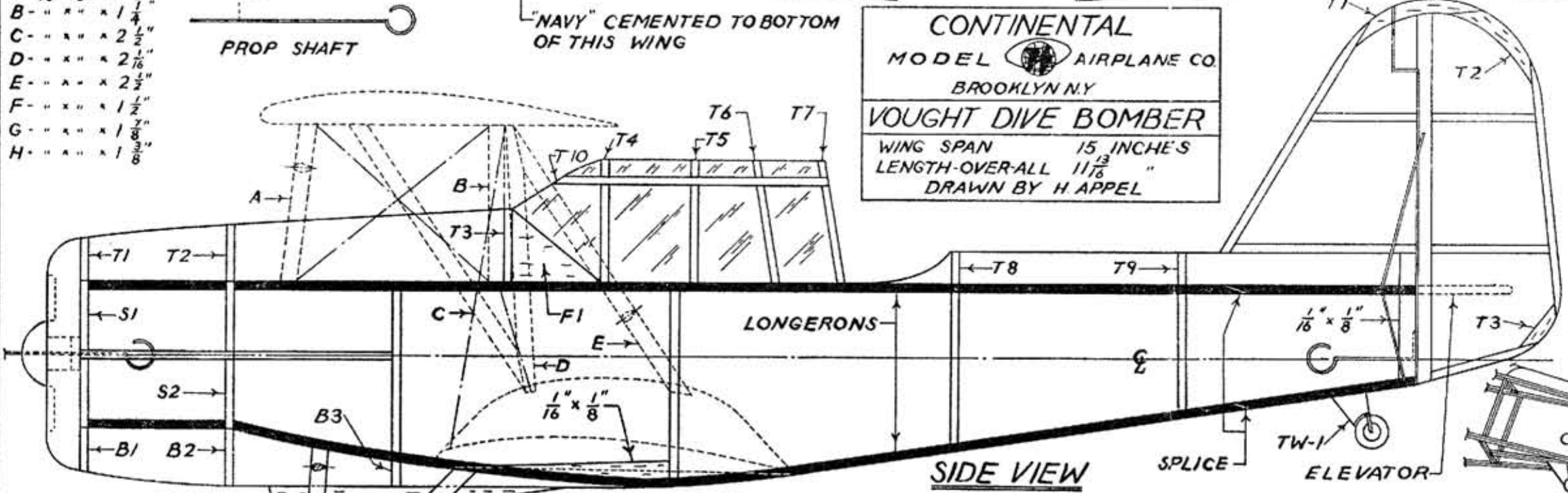
"U.S." CEMENTED TO BOTTOM OF THIS WING

INSTRUCTION
 STUDY PLAN CAREFULLY
 CUT OUT PARTS FOR THE WING
 AND ASSEMBLE AS SHOWN.
 LAY OUT SIDES OF FUSELAGE
 ON SHADED LONGERONS
 SHOWN ON SIDE VIEW WHEN
 TWO SIDES HAVE BEEN MADE
 CEMENT THEM TOGETHER
 WITH CROSSBRACES IN
 PROPER PLACES.
 CUT OUT FUSELAGE
 FORMERS AND CEMENT TO
 FUSELAGE, ADD STRINGERS.

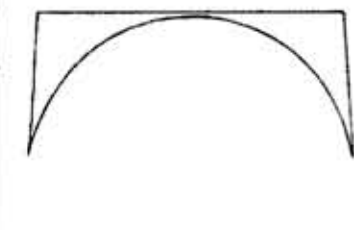


CUT OUT AND CEMENT TO FRONT OF COWLING

COTTON THREAD USED FOR ALL WIRE BRACING



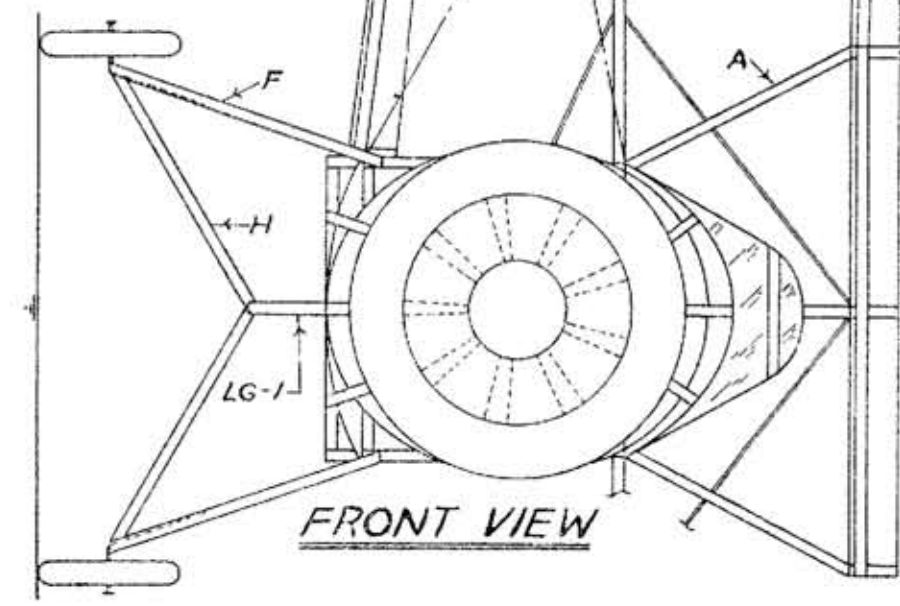
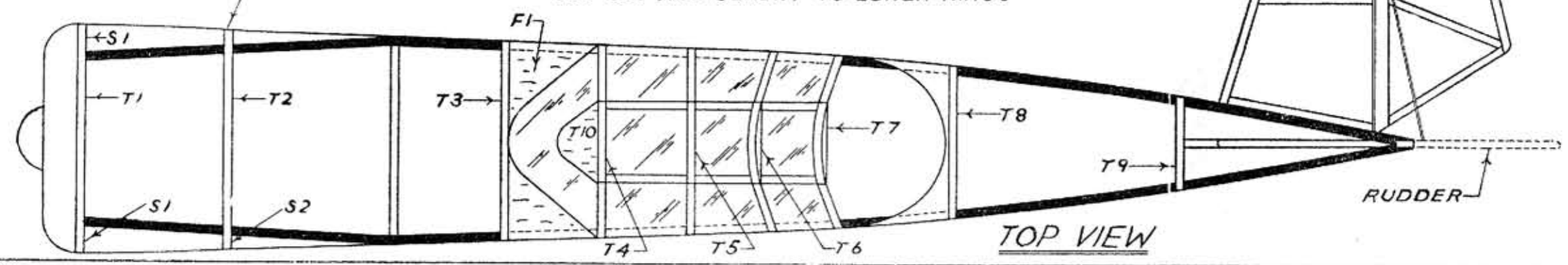
COLOR SCHEME
 ENTIRE PLANE
 WHITE



COCKPIT COWLING
 CUT OUT AND CEMENT TO FUSELAGE

U.S. NAVY

CUT OUT AND CEMENT TO LOWER WINGS



CUT OUT PARTS OF TAIL SURFACES, AND ASSEMBLE AS SHOWN.
 COVER ENTIRE MODEL.
 CUT OUT STRUTS AND LANDING GEAR PARTS
 ASSEMBLE MODEL, BEING CAREFUL THAT PARTS ARE CEMENTED INTO THEIR PROPER PLACE.
 GLIDE MODEL, IF IT DIVES WARP ELEVATORS UP, IF IT STALLS WARP ELEVATOR DOWN. WHEN THE MODEL GLIDES SMOOTHLY WIND UP THE PROP AND LET HER GO.

