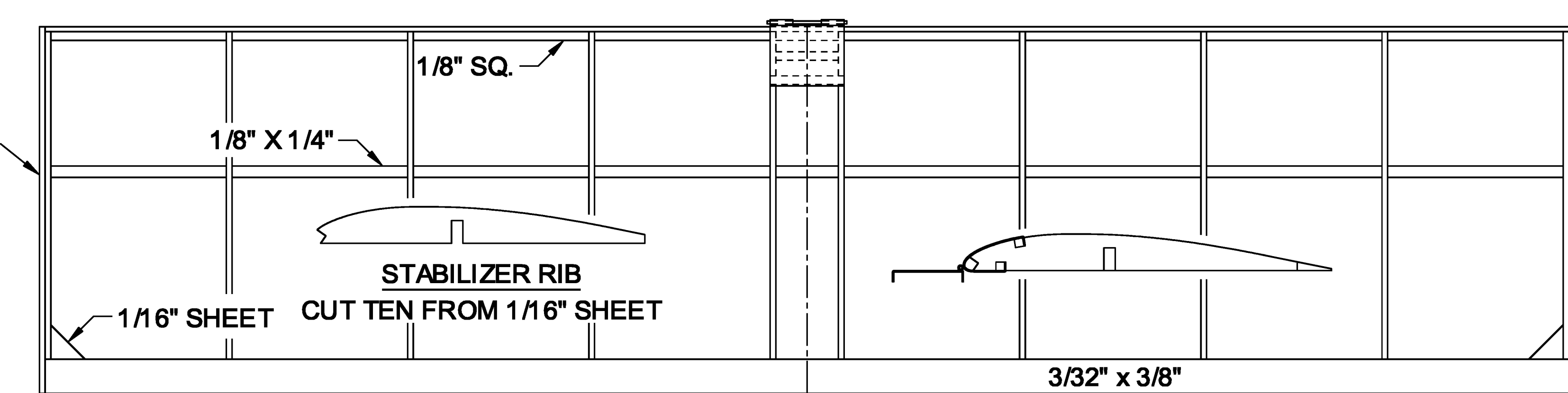
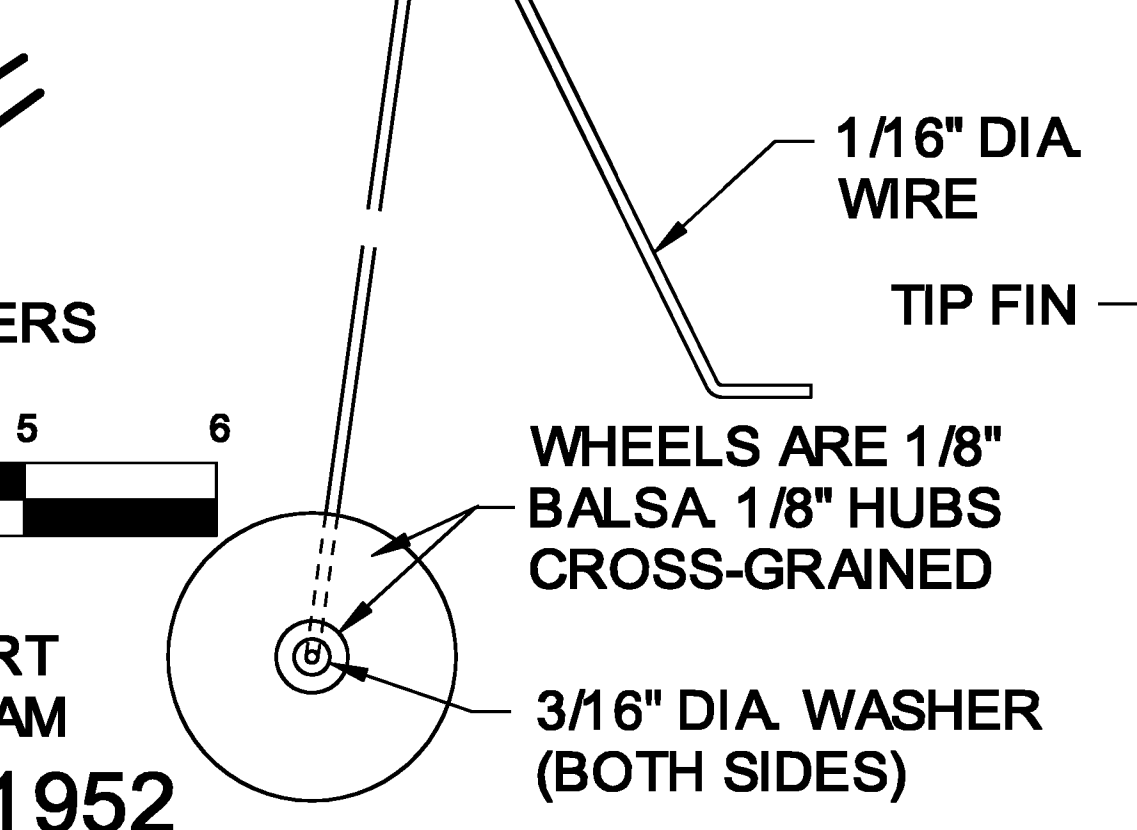
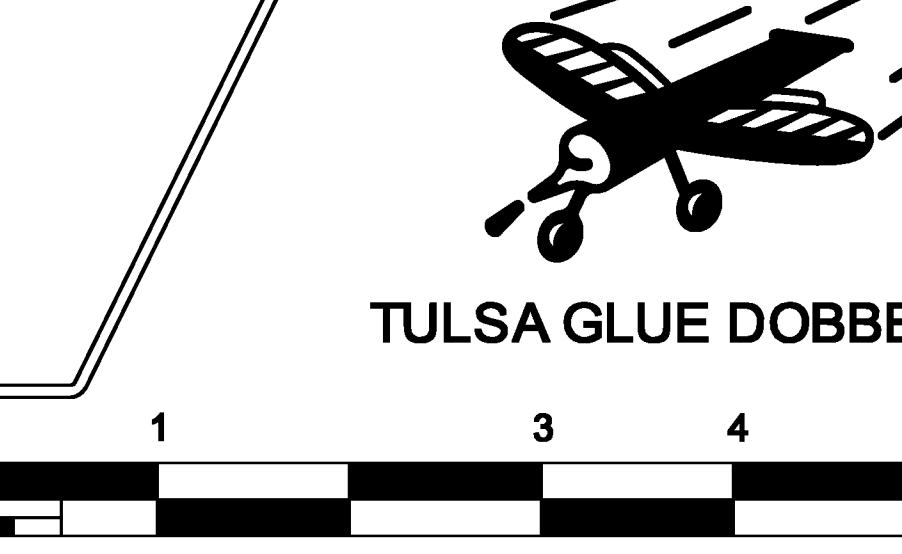
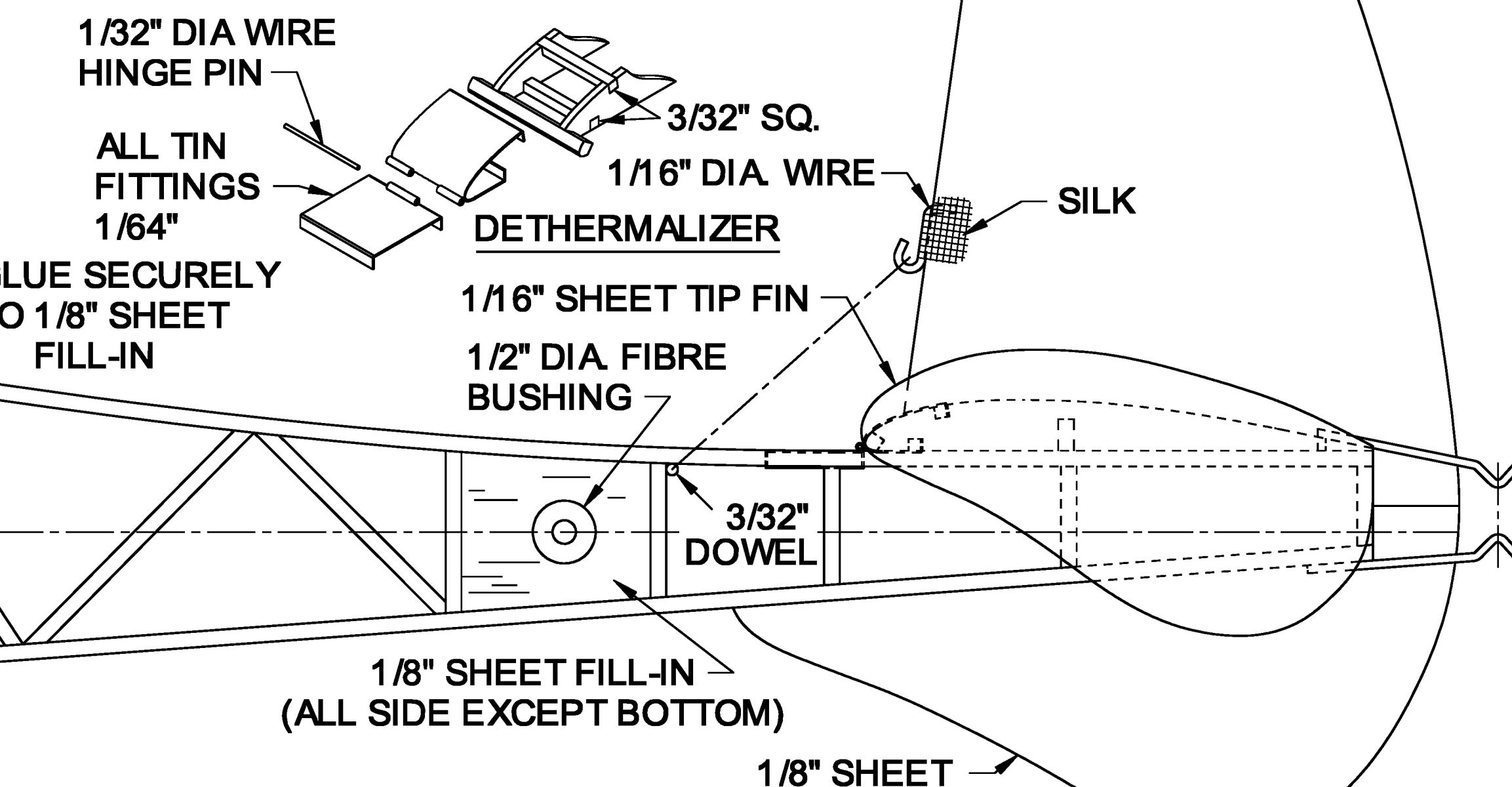
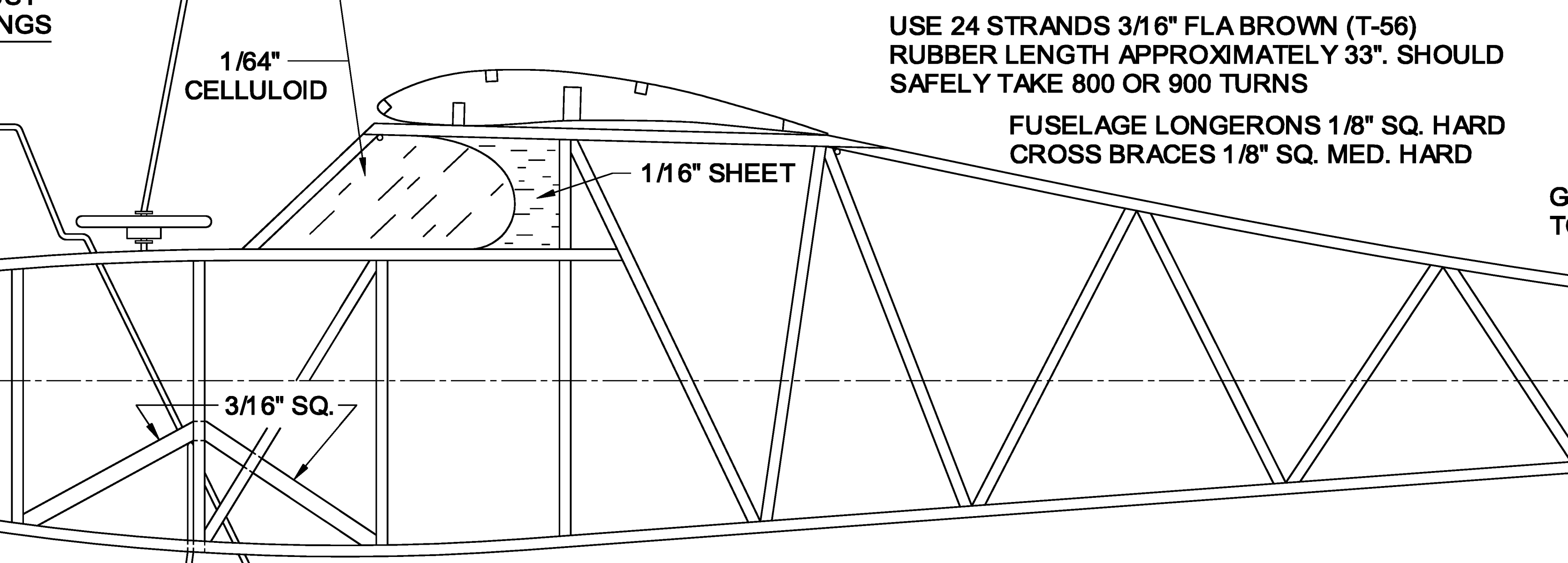
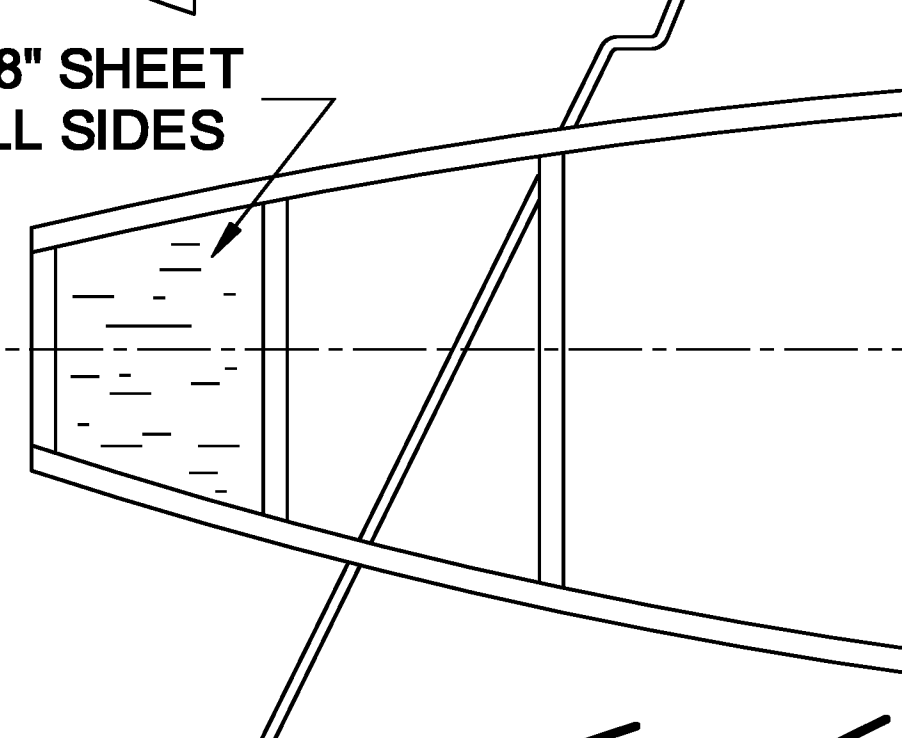
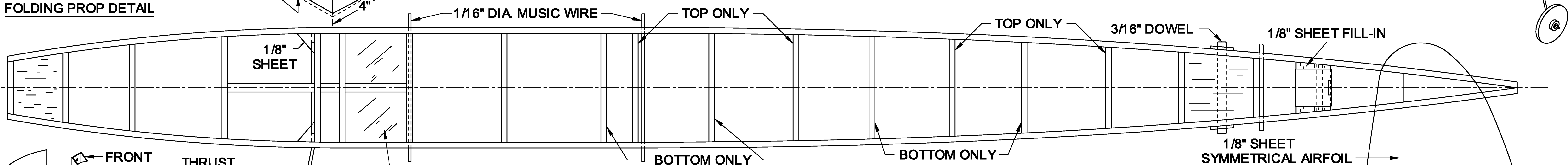
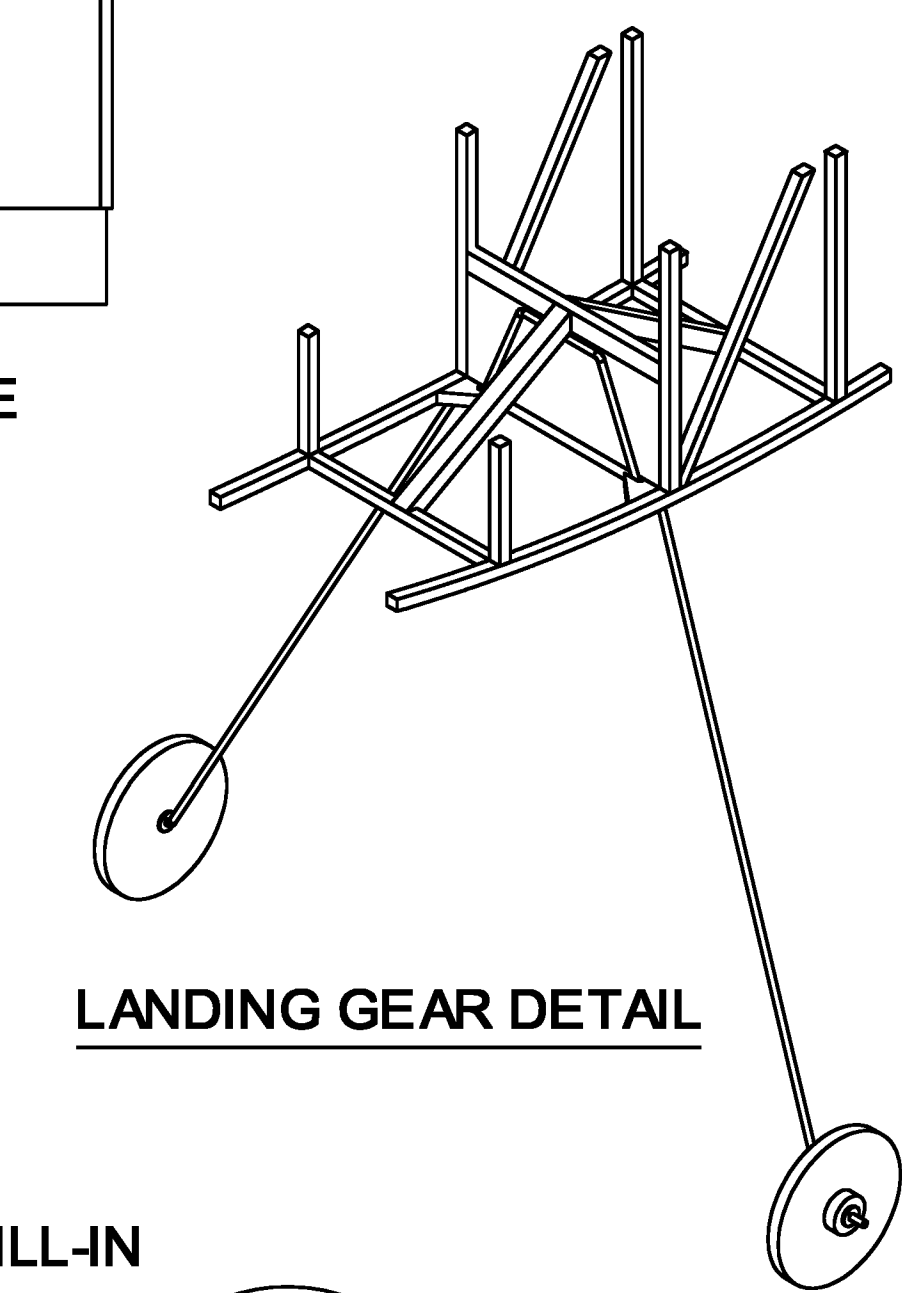
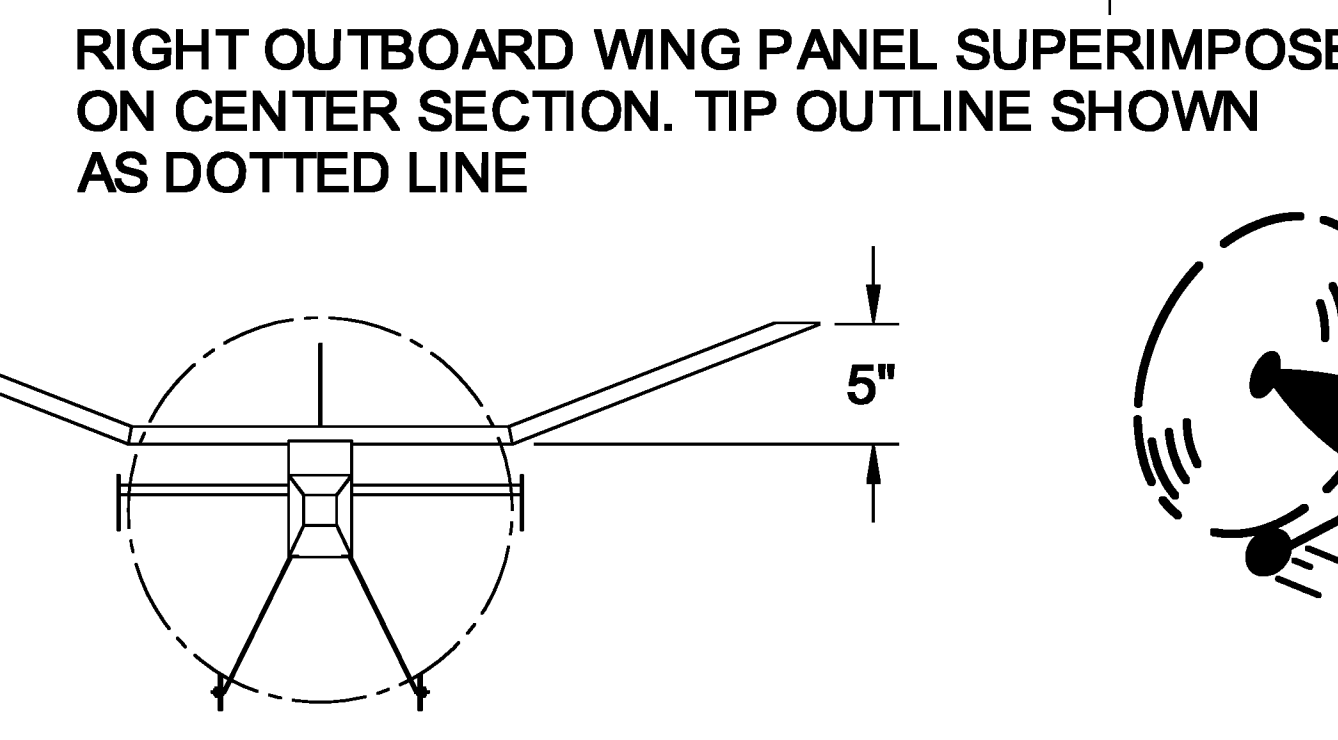
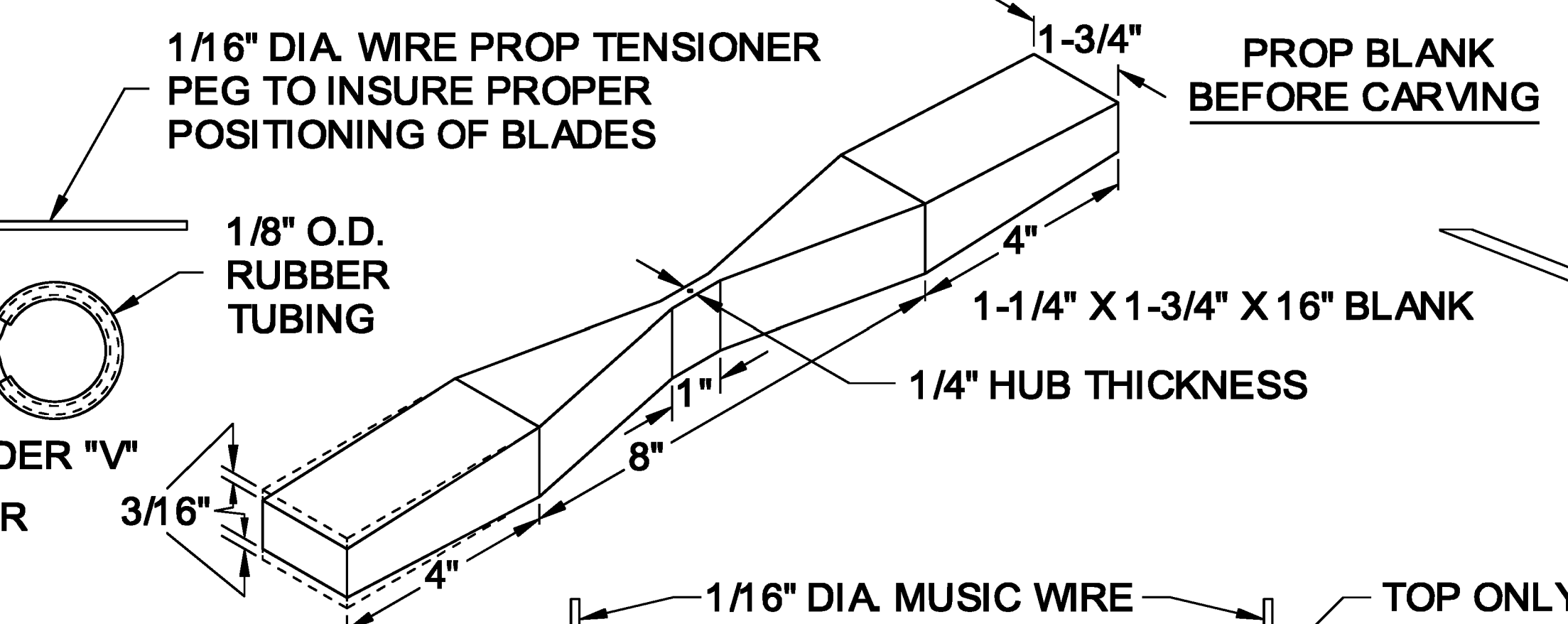
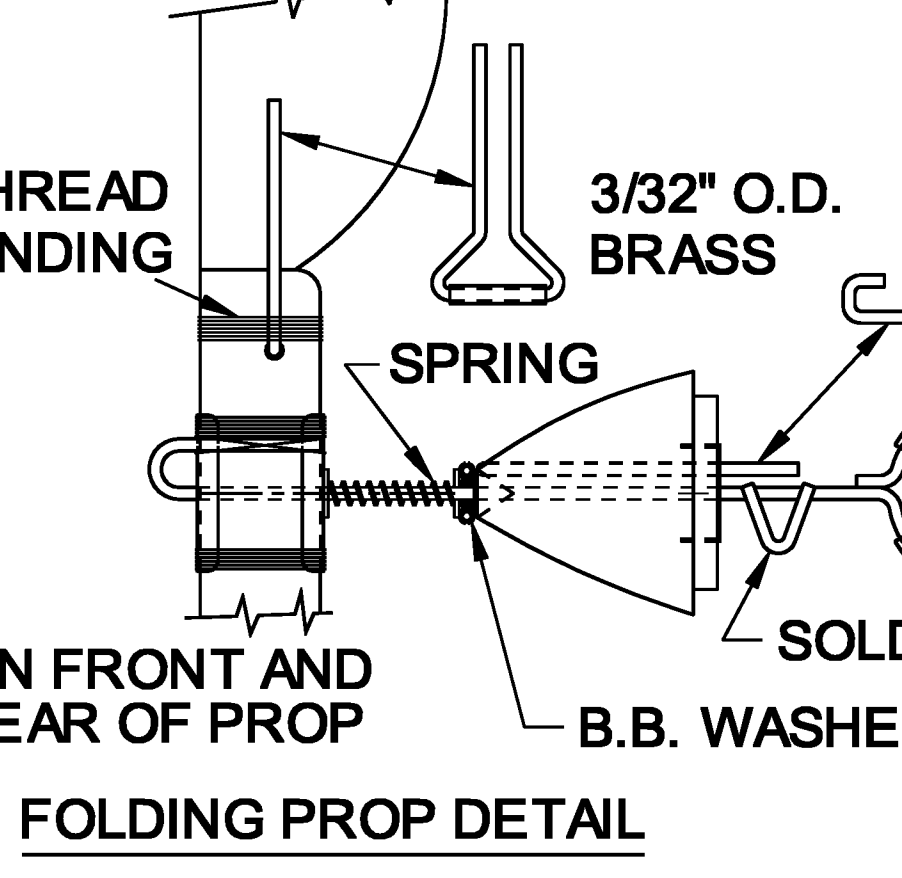


ENTIRE MODEL COVERED WITH JAP TISSUE AND GIVEN 3 COATS OF DOPE



DETHERMALIZER FUSE, 1/8" DIA. CORD SOAKED IN SALTPETER SOLUTION FOR 15 MIN. USE RUBBER BAND TO SECURE. USE SHORT PIECE OF THREAD TO STOP STABILIZER TRAVEL. THIS ANGLE SHOULD BE ABOUT 30 TO 40 DEGREES FOR SLOWEST DECENT.
 WING SPAN: 43.50"
 ACTUAL WING AREA: 210.22 SQ. IN.
 ELEVATOR AREA: 68 SQ. IN.
 FUSELAGE X SECTION: 12.63 SQ. IN.
 MEETS ALL WAKEFIELD REQ.
 BEST OFFICIAL TIME: 10:23.6
 BEST UNOFFICIAL TIME: 50:20

ALL AMERICAN RUBBER MODEL BY: ROBERT DUNHAM Air Trails Model Annual 1952

DRAWN BY JOE D. KEHR Cad By Gene Rock 2-2005