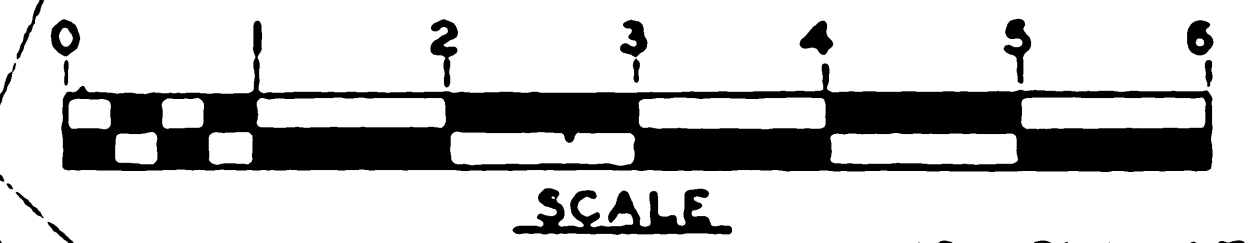
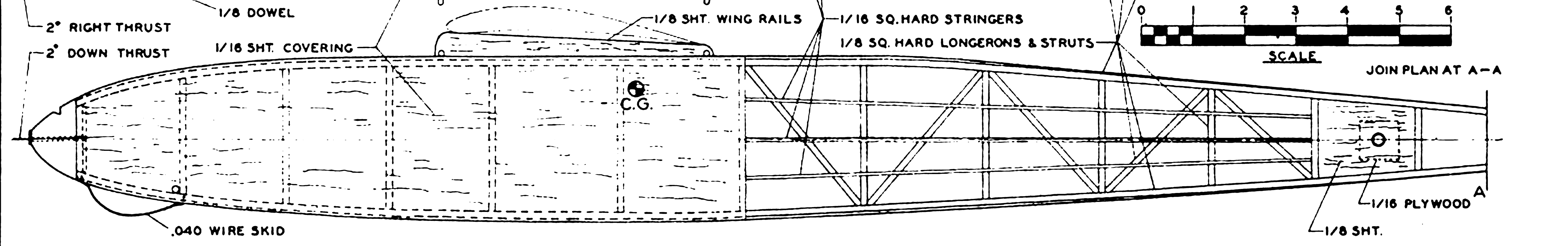
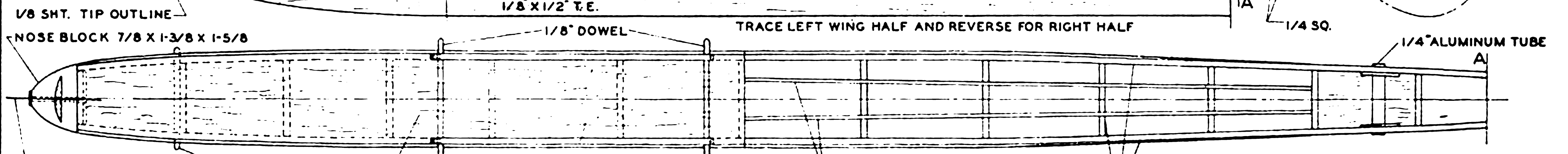
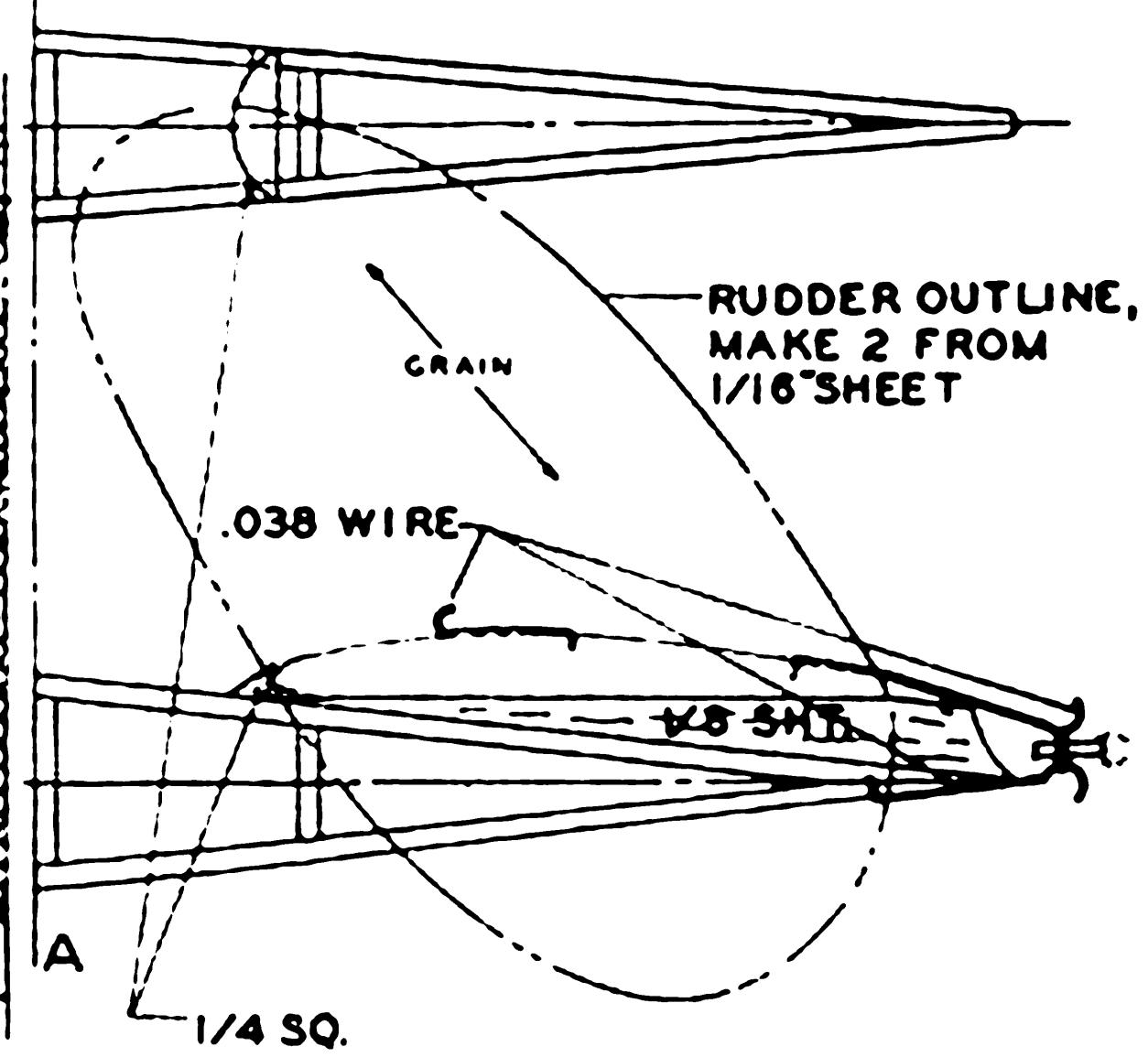
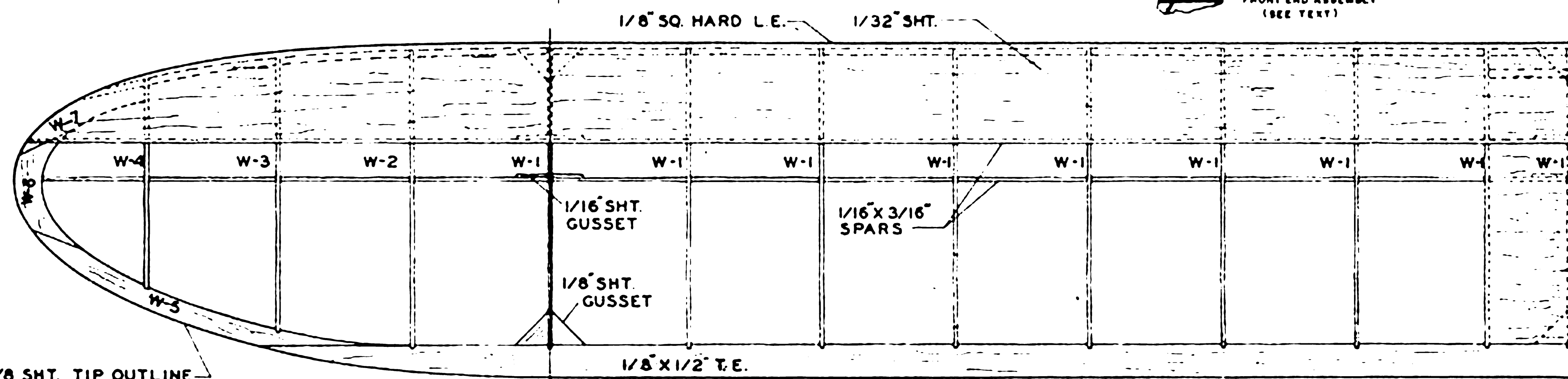
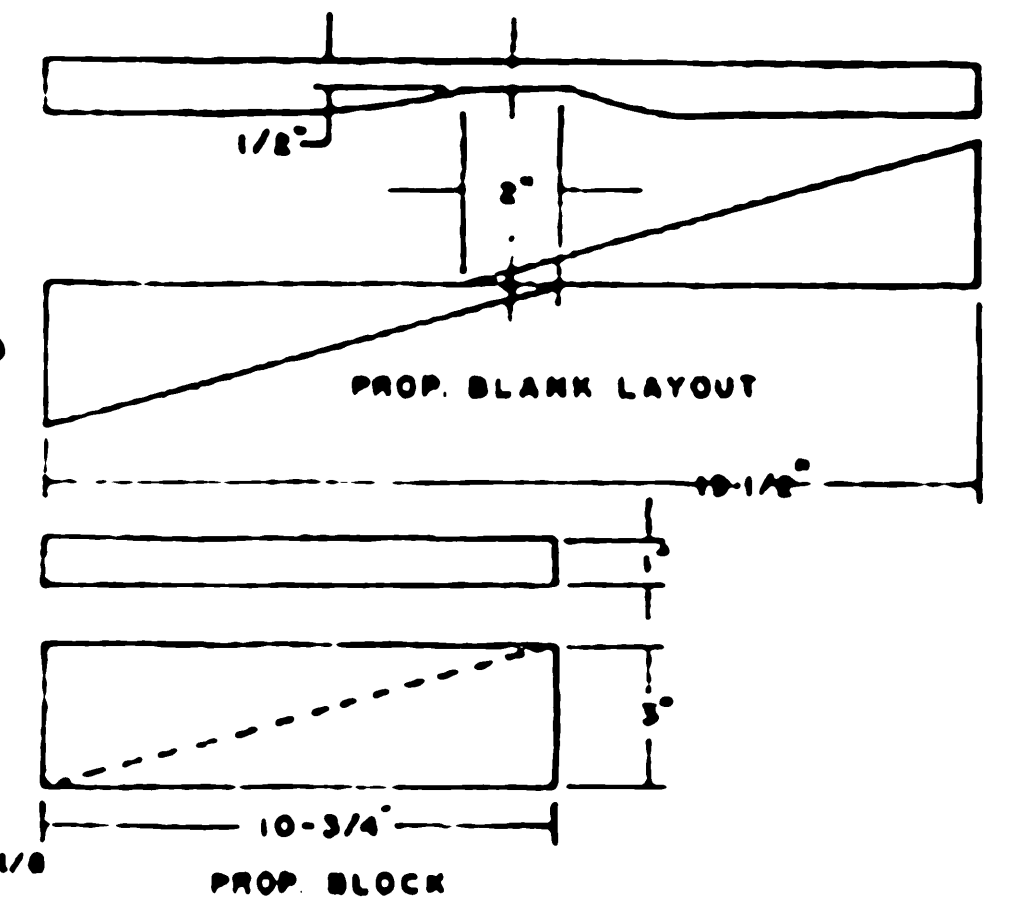
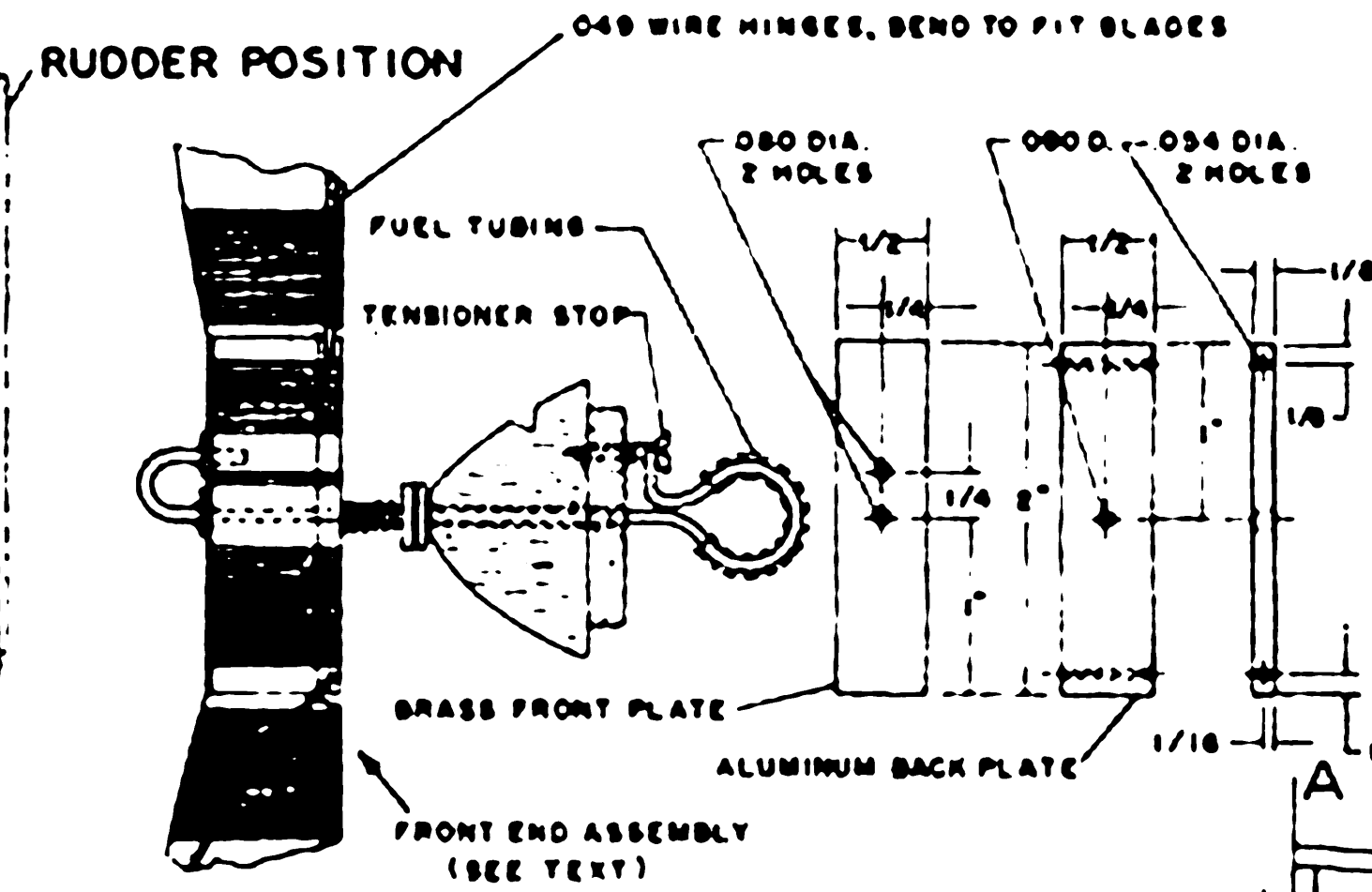
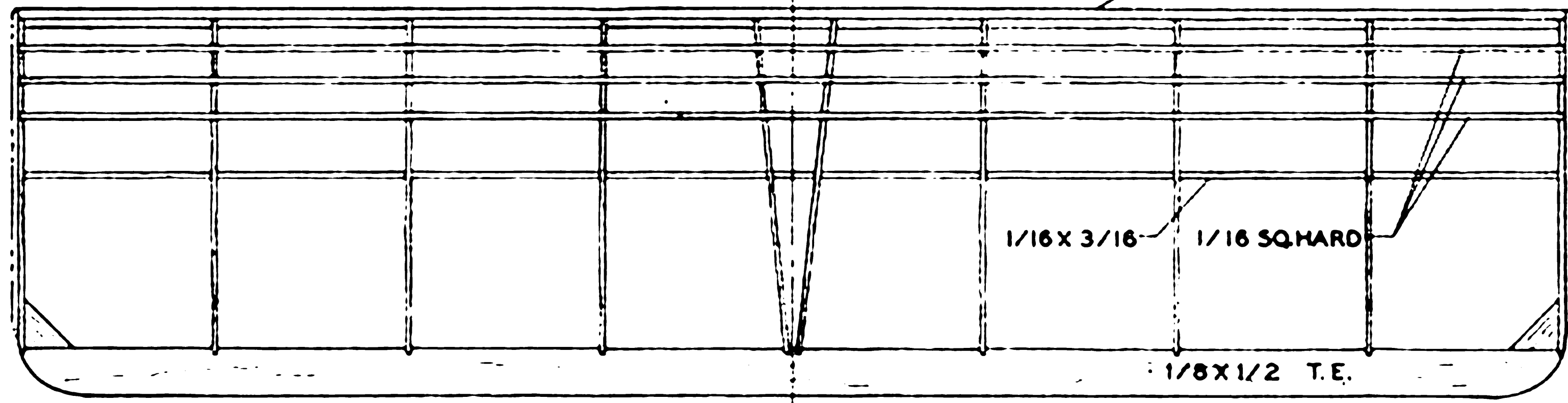
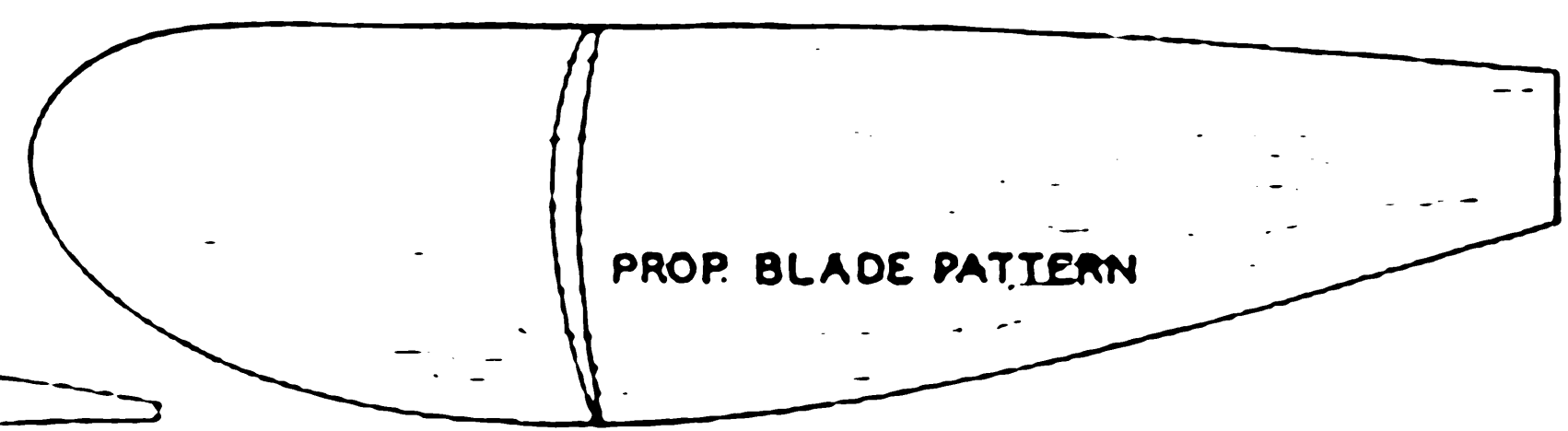
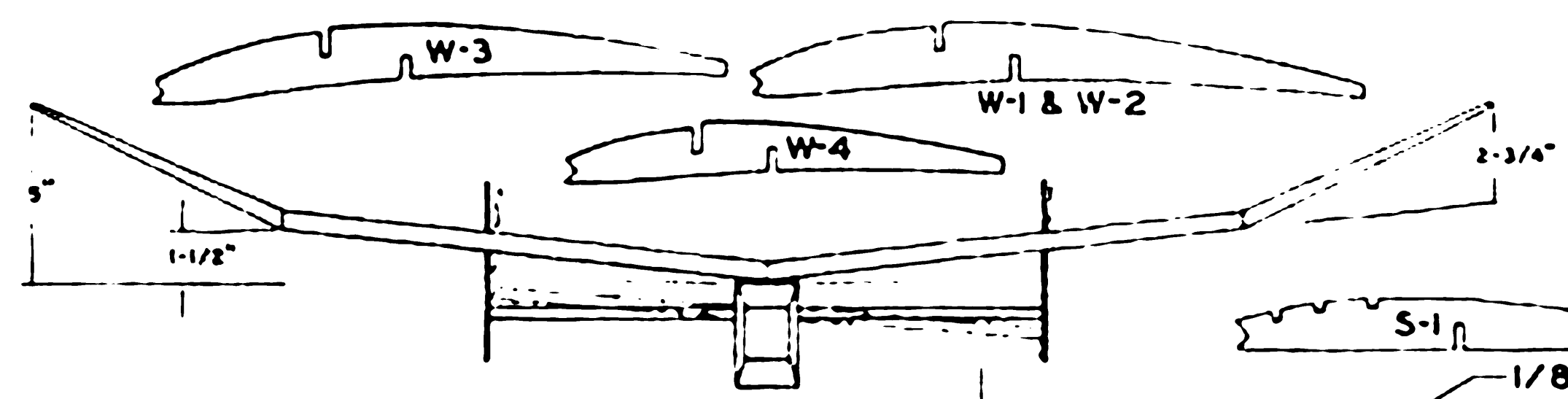


THE  
**CHAMP**

WAKEFIELD RECORD HOLDER  
SPAN 48 1/2" AREA (WING) 210 AREA (STAB) 64  
POWER 12 STRANDS 1/4" FLAT 24" LG.  
(PIRELLI, 50 GRAMS)  
DESIGNED BY POWERS LEFEBVRE & SAL CANNIZZO



JOIN PLAN AT A-A