

The "TWIN GULL"

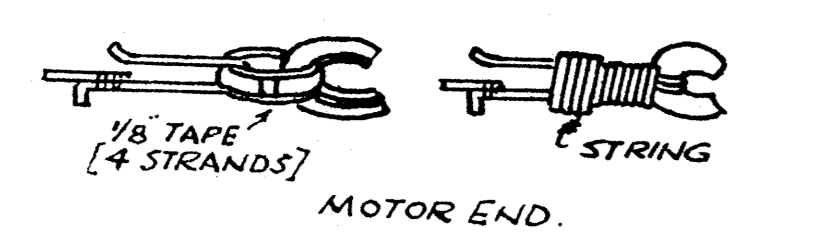
TWIN PUSHER WAKEFIELD DURATION MODEL INCORPORATING THE MOORE DRIVE PATENT NO 514974.

DESIGNED BY C. RUPERT MOORE A.R.C.A.

COPYRIGHT OF THE AEROMODELLER PLANS SERVICE LTD., ALLEN HOUSE, NEWARKE STREET, LEICESTER.

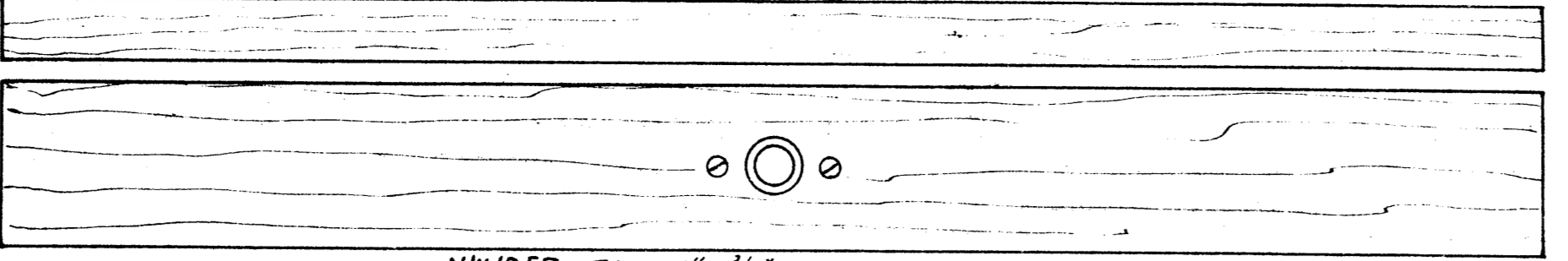
SPAN 46.9 INCHES
WING AREA 208 SQ. INS.
TOTAL WEIGHT 8 OZS.

RUBBER 12 TO 16 STRANDS $\frac{3}{16} \times \frac{1}{16}$
30 TO 40 LONGS ACCORDING TO GEAR BOX USED.

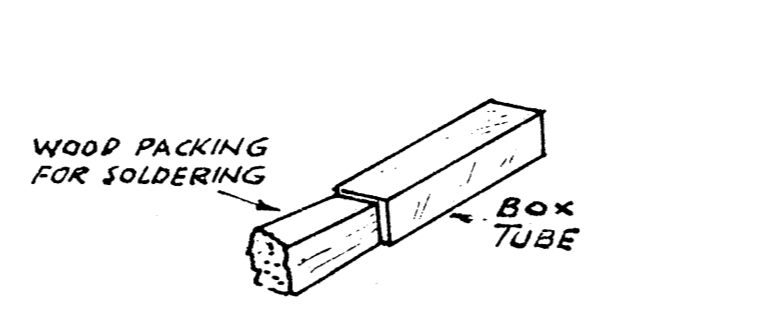


THRUST ADJUSTMENT - PRICK PEG IN MIDDLE ENDS OF WINDING BLOCK. NOTE - FOR DOWNTHRUST PRICK TOP OF MIDDLE ENDS.

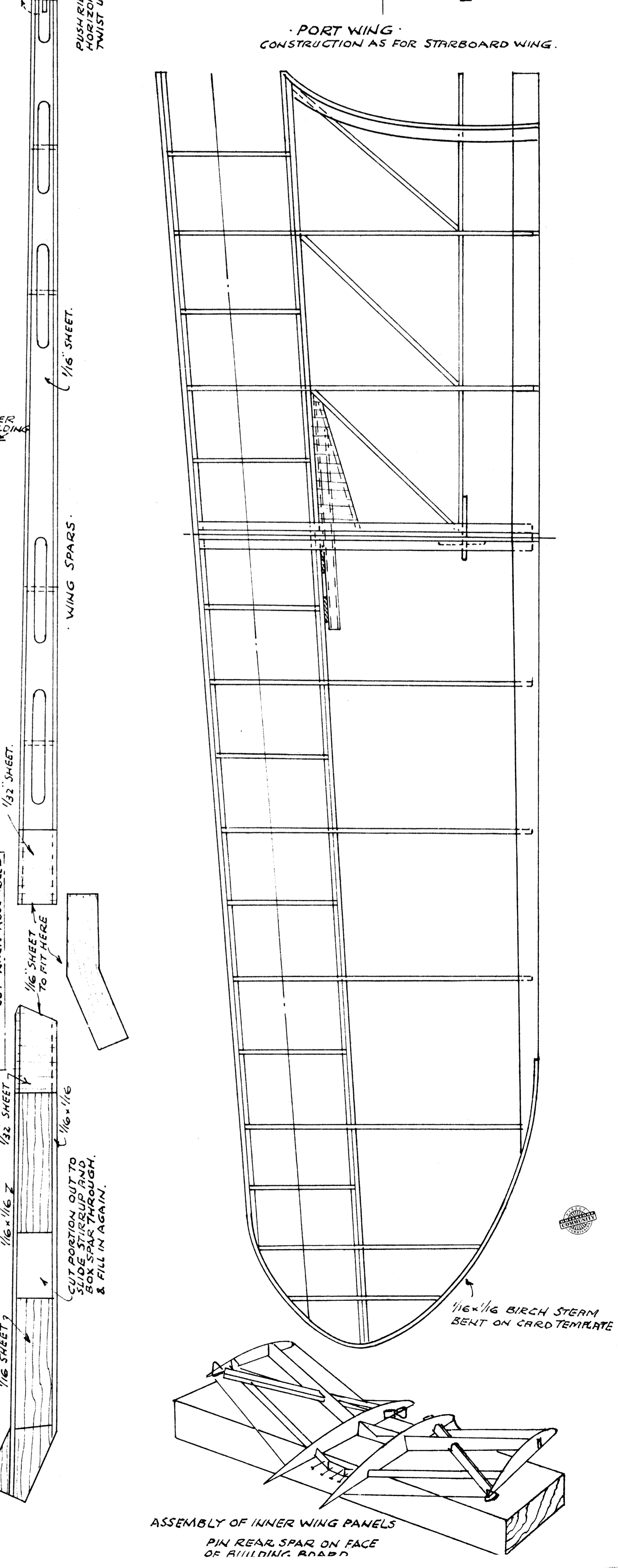
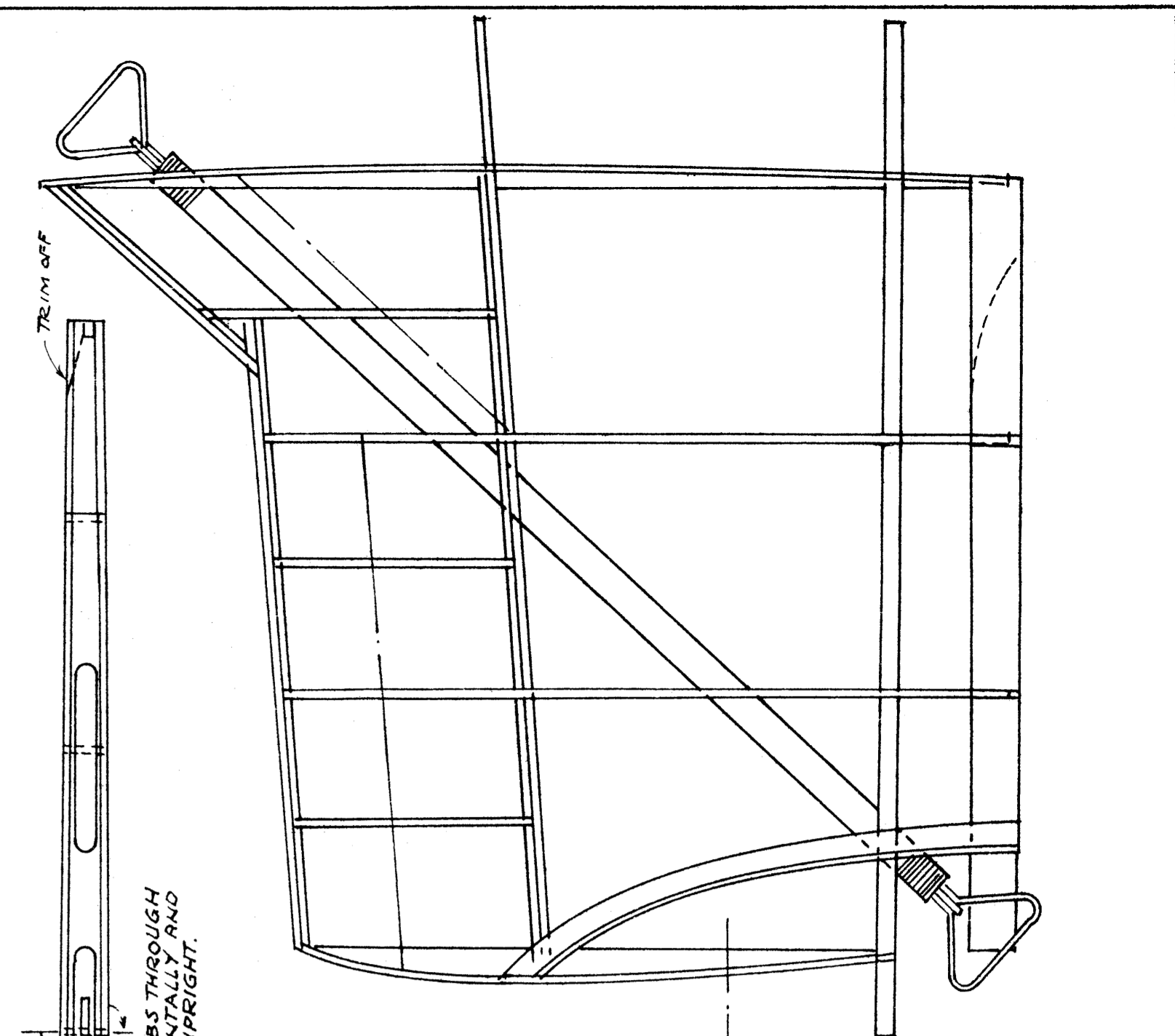
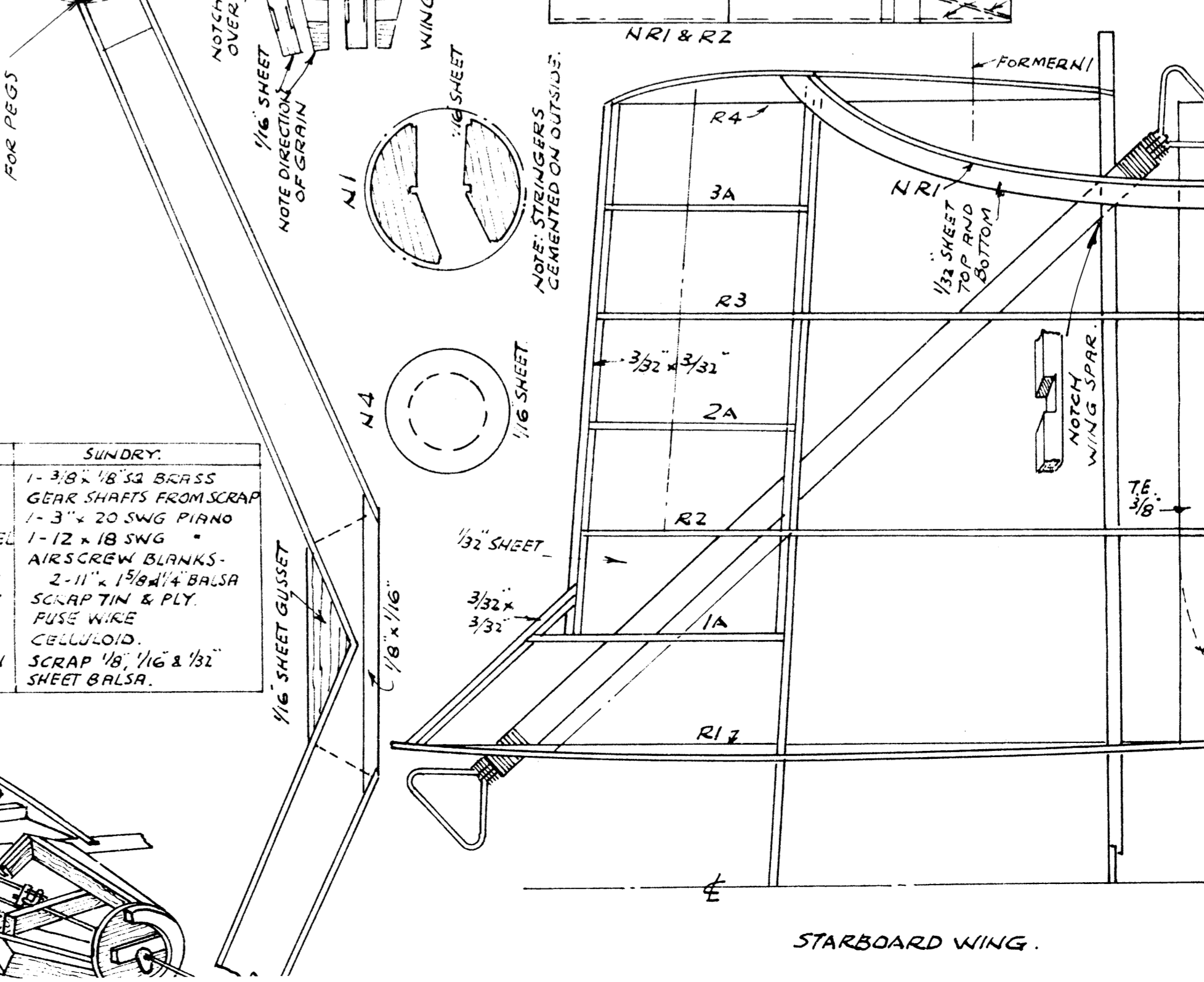
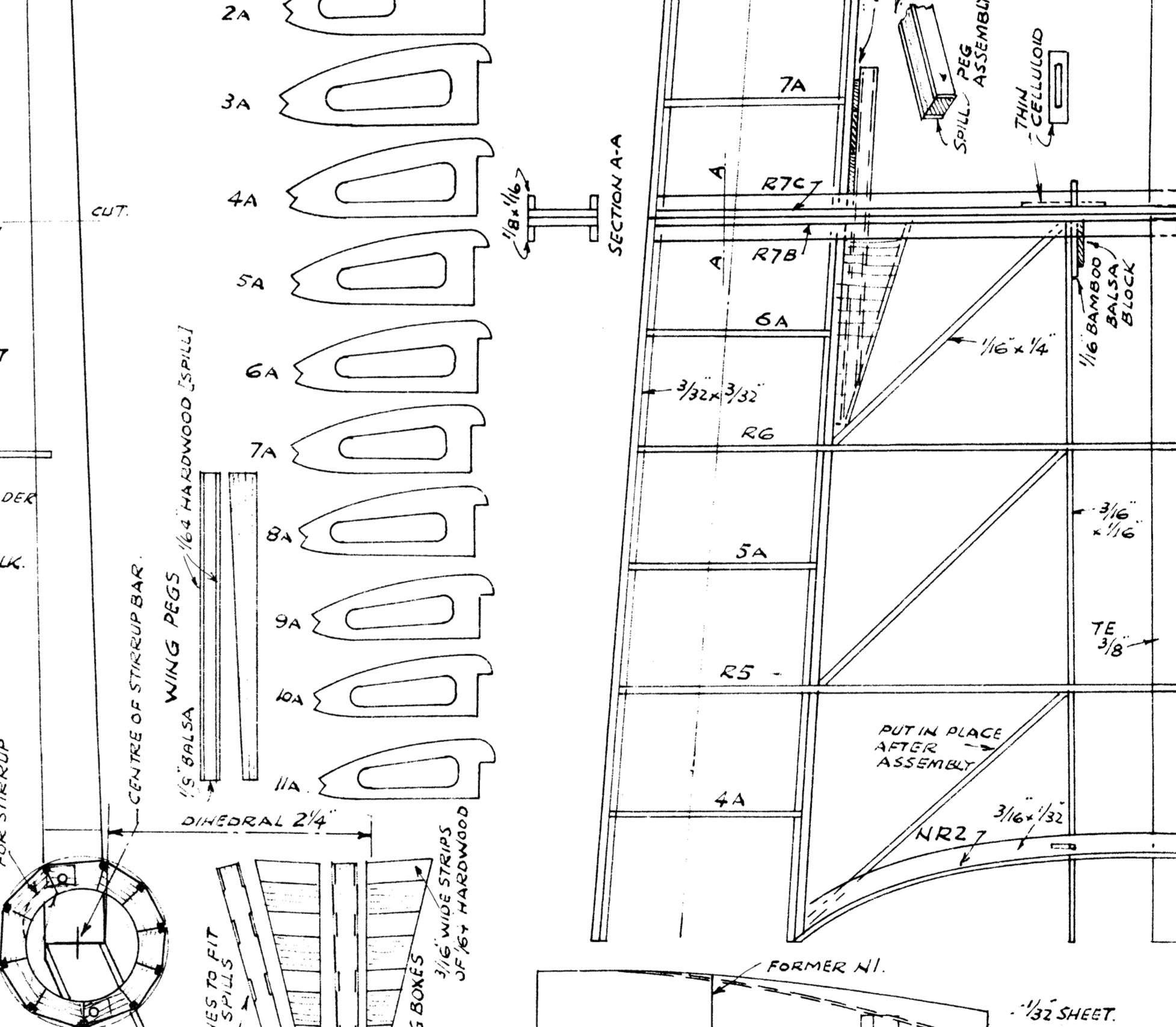
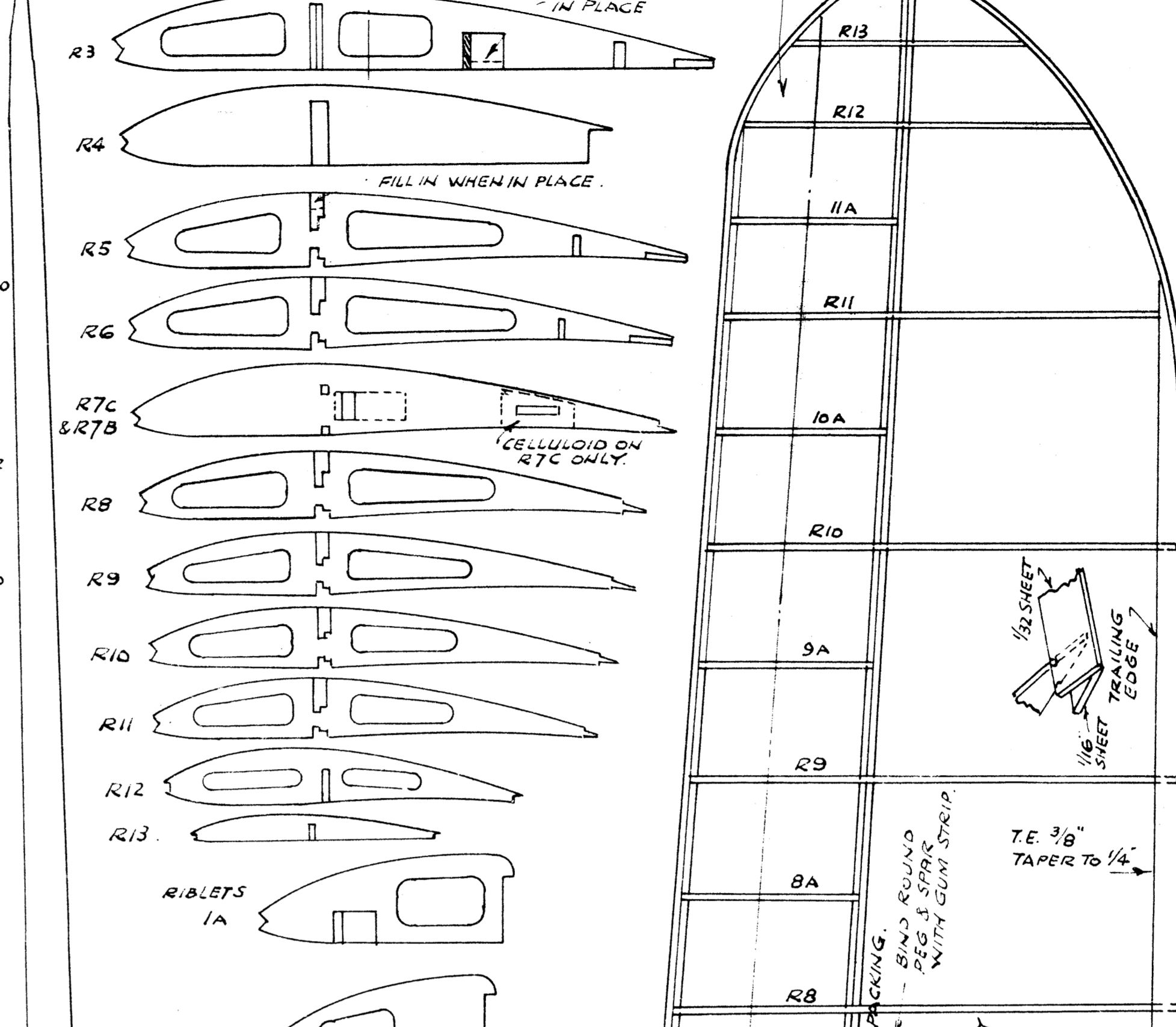
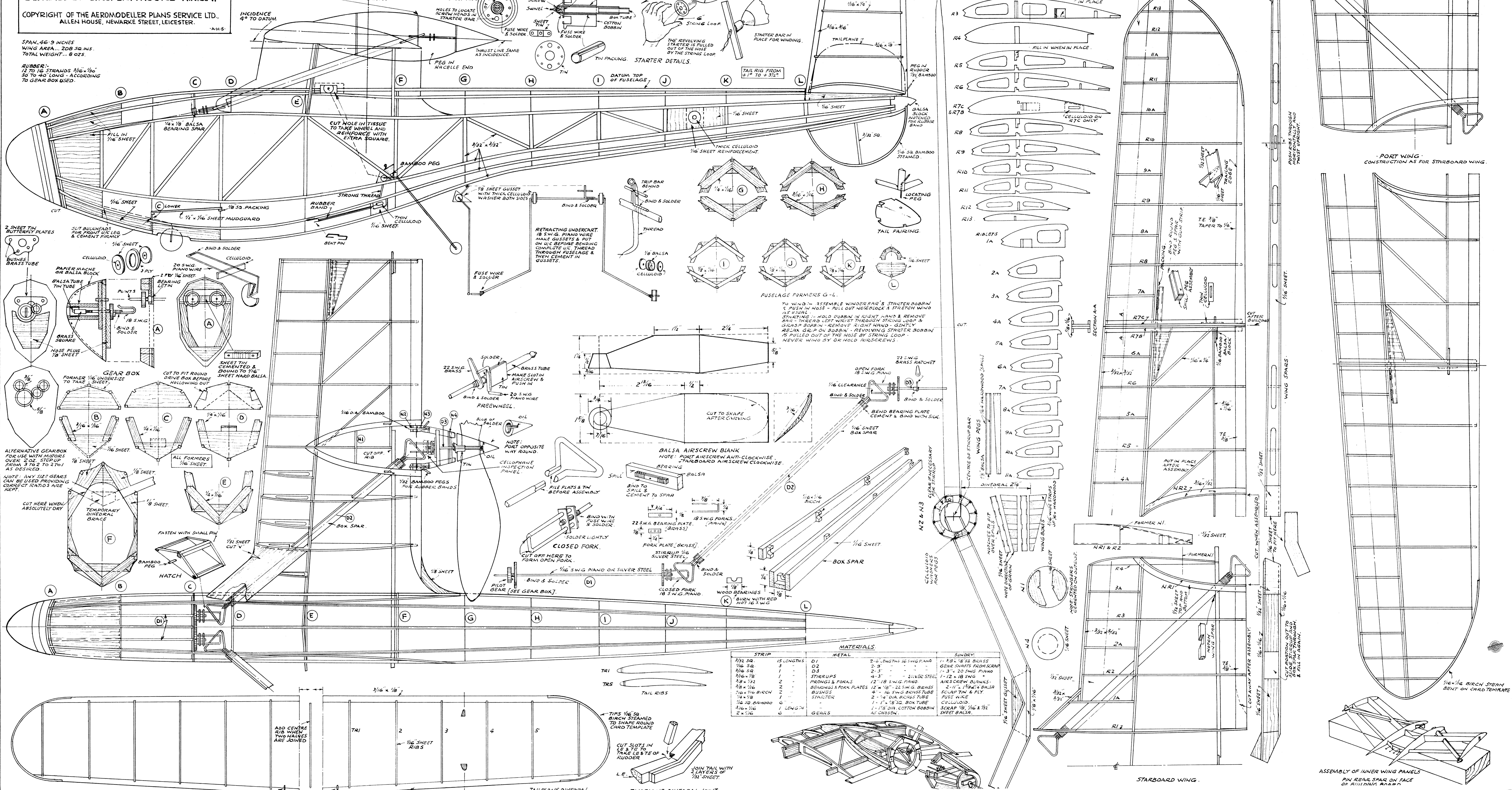
CENTRE OF GRAVITY.
INCIDENCE 4° TO DATUM



WINDER BAR 1" x $\frac{1}{8}$ " HARDWOOD
GIMP PINS
SHEET TIN
HOLES TO LOCATE SCREW HEADS IN STARTER BAR



WOOD PACKING FOR SOLDERING
BOX TUBE
THE REVOLVING STARTER IS PULLED OUT OF THE NOSE BY THE STRING LOOP



MATERIALS			
STRIP	IS LENGTHS	METAL	SUNDRY
$\frac{1}{16}$ SQ.	15	D1	2 - 2 LENGTHS 18 SWG PIANO
$\frac{1}{16}$ SQ.	3	D2	2 - 3" 20 SWG PIANO
$\frac{1}{16}$ SQ.	2	D3	2 - 3" 20 SWG PIANO
$\frac{1}{16}$ SQ.	1	STIRRUPS	4 - 3" 20 SWG PIANO
$\frac{1}{16}$ SQ.	2	FRONTS & FORMS	12 - 18 SWG PIANO
$\frac{1}{16}$ SQ.	2	BUSHES & FORK PLATES	12 - 18 SWG PIANO
$\frac{1}{16}$ SQ.	2	BUSHES	4 - 16 SWG BRASS TUBE
$\frac{1}{16}$ SQ.	2	STARTER	2 - 14 DIA. BRASS TUBE
$\frac{1}{16}$ SQ.	1	GEARS	1 - 17 DIA. BRASS TUBE
$\frac{1}{16}$ SQ.	1	GEARS	1 - 15 DIA. COTTON BOBBIN
$\frac{1}{16}$ SQ.	1	GEARS	1 - 15 DIA. COTTON BOBBIN

ASSEMBLY OF INNER WING PANELS ON REAR SPAR ON FACE OF BUILDING BOARD