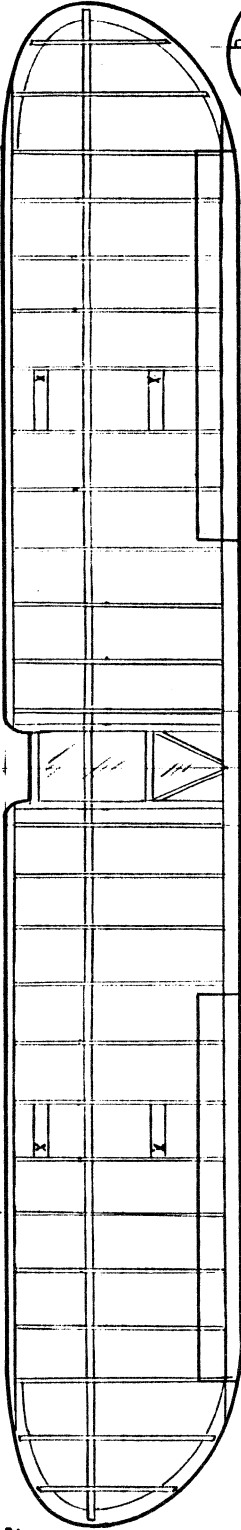


WING TIPS FROM 1/16 TH SHEET

PITOT TUBE LOCATION

WING LEADING EDGE 1/16 BY 3/16

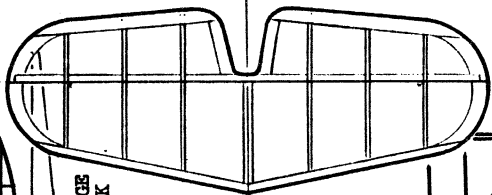


WING

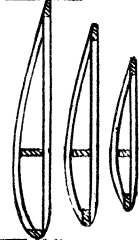
STRUT LOCATION ON THE WING MARKED BY "X"

WING SPAR FROM 1/16 TH SHEET

TAIL TIPS, SPAR, LEADING EDGE AND TRAILING EDGE 1/16 THICK RIBS 1/32ND THICK



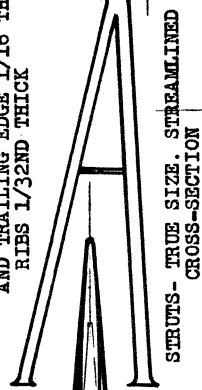
COWL TOP AND BOTTOM CARVED FROM BLOCK BALSA SIDES ARE MADE OF 1/16 TH SHEET BALSA



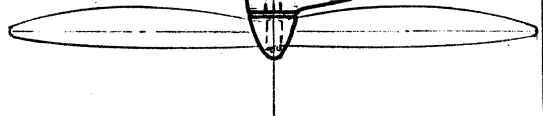
PLASTIC PROPELLER AND THRUST PLUG

FUSELAGE TOP VIEW

TYPICAL WING RIBS SLICE FROM 1/32ND THICK SHEET BALSA



STRUTS- TRUE SIZE. STREAMLINED CROSS-SECTION



DOWEL OR ALUMINUM TUBE EXHAUST STACKS

BASIC FUSELAGE STRUCTURE IS 1/16 TH THICK

ALL PARTS ARE BALSA UNLESS OTHERWISE NOTED  
PEANUT SCALE REARWIN SPEEDSTER

WHEEL PANTS ARE THREE LAYERS OF BALSA SHEET, THICK CENTER IS 1/4 TH THICK OUTER LAYERS ARE 1/16 TH

By *Nate Morney*

FRONT VIEW

LANDING GEAR WIRE IS ENCASED IN SHEET BALSA FAIRINGS

