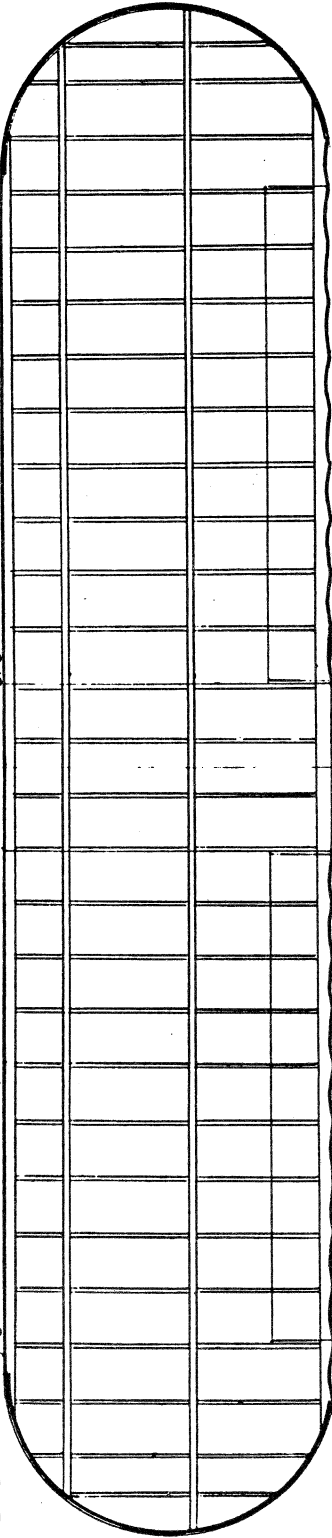
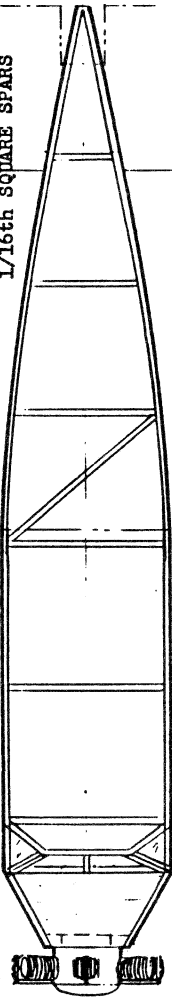


LAMINATED TIPS, 3 LAYERS OF .020 BY 1/16th MODEL RAILROAD BASSWOOD 3/32nd BY 1/4 Balsa LEADING EDGE 1/32nd SHEET Balsa RIBS



1/16th SQUARE SPARS

1/16th BY 1/8th Balsa TRAILING EDGES-NOTE SCALLOPS

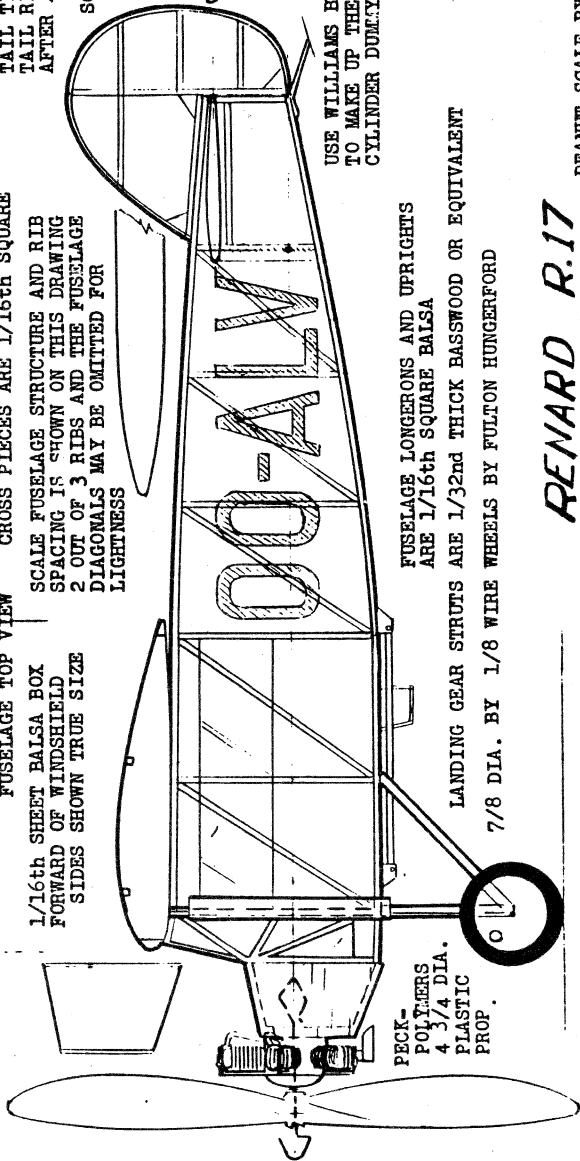


FUSELAGE TOP VIEW
1/16th SHEET Balsa BOX FORWARD OF WINDSHIELD SIDES SHOWN TRUE SIZE

CROSS PIECES ARE 1/16th SQUARE
SCALE FUSELAGE STRUCTURE AND RIB SPACING IS SHOWN ON THIS DRAWING
2 OUT OF 3 RIBS AND THE FUSELAGE DIAGONALS MAY BE OMITTED FOR LIGHTNESS

TAIL TIPS TWO LAYERS OF .020 BY 1/16th BASSWOOD
TAIL RIBS AND SPARS 3/32nd THICK BY WIDTH SHOWN
AFTER ASSEMBLY SAND TO STREAMLINED AIRFOIL SECTION

SCALE DIHEDRAL SHOWN



PECK-POLYMERS
4 3/4 DIA.
PLASTIC
PROP.

FUSELAGE LONGERONS AND UPRIGHTS ARE 1/16th SQUARE Balsa

LANDING GEAR STRUTS ARE 1/32nd THICK BASSWOOD OR EQUIVALENT

7/8 DIA. BY 1/8 WIRE WHEELS BY FULTON HUNGERFORD

USE WILLIAMS BROS CYLINDER TO MAKE UP THE FIVE CYLINDER DUMPEY MOTOR

STREAM-LINED Balsa SHOCK STRUT FAIRING

USE 1/32nd DIA. PIANO WIRE FOR LANDING GEAR STRUCTURE DO NOT CEMENT TO STRUTS

RENARD R.17

PEANUT SCALE BY WALT MOONEY