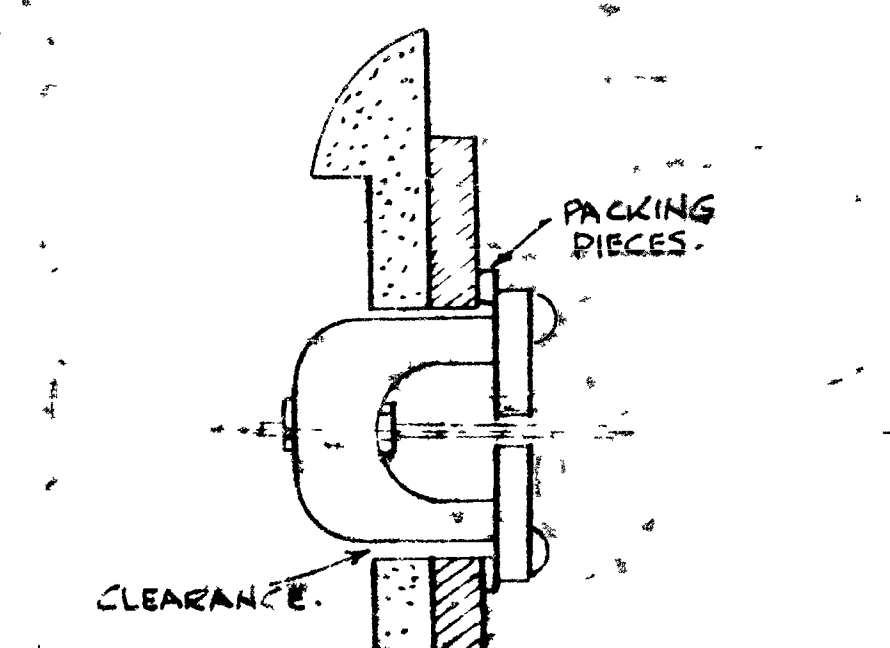
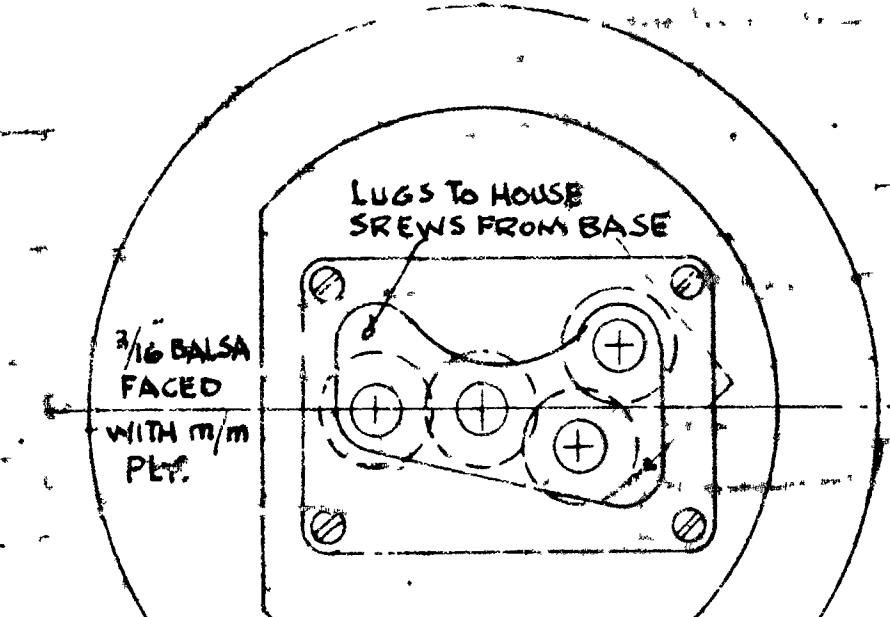
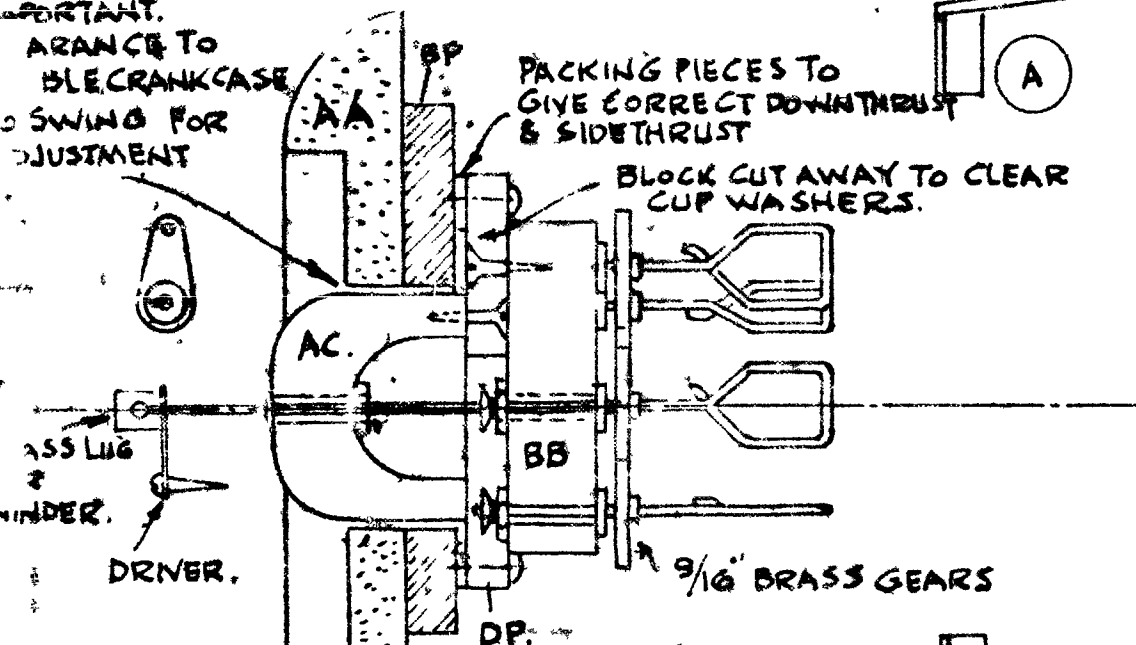


THESE FORMERS (2) ARE ADDED AFTER PAPER COVERING & THEN COVERED WITH PAPER TO FORM FAIRINGS.



WING CONSTRUCTION - WINGS ARE BUILT IN TWO HALVES & HELD TOGETHER BY RUBBER BANDS IN BOTH L.E. & T.E. OUTER PANELS ARE ADDED TO CENTRE SECTIONS. WHEEL BOX FORMATIONS ARE MADE AFTER THE LEADING EDGE OF WHICH IS BUILT UP FROM SCRAP. L.E. IS COVERED WITH 1/32 SHEET FOR LIGHTNESS AFTER COVERING. TRAILING EDGE WITH 1/32 SHEET STRIP 3/4" WIDE PINNED TO BOARD, RIBS LAID ON IN POSITION & TOP 1/2" Balsa GLUED INTO PLACE, ALSO CUT AWAY FOR LIGHTNESS.

WING CONSTRUCTION - WINGS ARE BUILT IN TWO HALVES & HELD TOGETHER BY RUBBER BANDS IN BOTH L.E. & T.E. OUTER PANELS ARE ADDED TO CENTRE SECTIONS. WHEEL BOX FORMATIONS ARE MADE AFTER THE LEADING EDGE OF WHICH IS BUILT UP FROM SCRAP. L.E. IS COVERED WITH 1/32 SHEET FOR LIGHTNESS AFTER COVERING. TRAILING EDGE WITH 1/32 SHEET STRIP 3/4" WIDE PINNED TO BOARD, RIBS LAID ON IN POSITION & TOP 1/2" Balsa GLUED INTO PLACE, ALSO CUT AWAY FOR LIGHTNESS.

L.E. CUT AWAY FOR LANDING LIGHT. LINE WITH SILVER PAPER & COVER WITH CELLULOID.

CENTRE SECTION FOR DUMMY W/CART WITH RIB 2A.

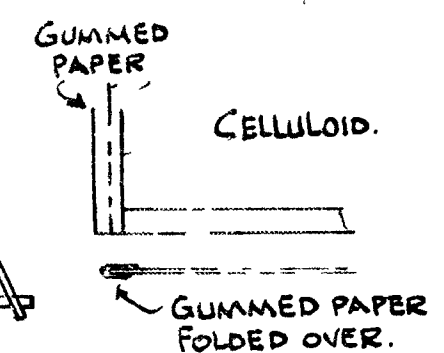
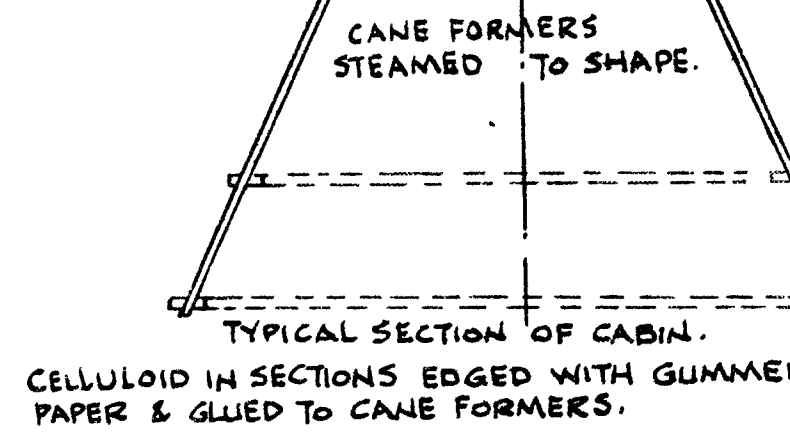
END OF CAPPING STRIP.

"HARVARD II."
1 INCH TO THE FOOT
FLYING SCALE MODEL
DESIGNED BY
H. J. TOWNER.

Distributed by AIRCRAFT (TECHNICAL) PUBLICATIONS LTD on behalf of the publishers
AEROMODELLER PLANS SERVICE LTD 38, CLARENDON ROAD, WATFORD, HERTS.

POWER WITH GEAR BOX: 4 STRANDS 3/16" RUBBER 20" LONG PER SPINDLE DRIVING 10" DIA. PROP. SAFE TURNS APPROX. 800.
POWER WITHOUT GEAR BOX: 16 STRANDS 3/16" RUBBER 20" LONG DRIVING 12" DIA. PROP. SAFE TURNS APPROX. 400.

COPYRIGHT OF THE AEROMODELLER PLANS SERVICE LTD



REINFORCEMENT STRIP

REINFORCEMENT STRIP

FAIRING

INSTRUMENT PANEL BLACK BACKING PAPER AS USED ON PHOTO FILMS WITH INSTRUMENTS DRAWN IN WHITE.

LINING UP OF FORMERS. REPRESENTS CENTRE OF LONGITUDINAL JIG SUCH AS 1 1/2" OR AVAILABLE STOUT WOOD WITH TEMPORARY LOCATING CROSS STRUTS AS PER SKETCH. SLIDING RIF ON JIG. AFTER ASSEMBLY JIG IS WITHDRAWN & JURY STRUTS REMOVED.

APPROX. POSITION OF STRINGERS 1/16" x 1/8"

ALL RIBS & SPARS 1/16" FLAT STOCK.

FITS IN TUBES AT 1/4" - 1/2"

TAIL WHEEL FORK CONSTRUCTION

CAN BE USED AS REAR MOTOR FIXING

1/16" WIRE WOUND ROUND FORMER ONE END FORMING AXLE & BENT ROUND & UP INSIDE SPRING

3/16" Balsa - CENTRE CUT OUT TO BE PUSH FIT FOR FRONT.

CONSTRUCTION OF FORMERS. OUTER RING 1/64" WOOD WRAPPED ROUND INNER FORMER TO A THICKNESS OF 1/16" GLUED BETWEEN LAYERS THUS FORMING 'L' SECTION. NOTE FILLETS IN ACUTE BENDS & 1/16" x 1/8" VERTICAL SPACERS IN FORMERS 'D' & 'E'.

SPARS CUT TO SECTION AFTER ASSEMBLY FOR LIGHTNESS

COMPLETED OUTER PANEL IS TURNED THRU 15° TO ENGAGE SLOTS IN M.S. TO ENGAGE IN RIB 3 WHILE SS IS SPRUNG INTO PLACE.

ACTUAL ANGLE OF CRANK IN UP POSITION

WOOD BLOCK TO CARRY BEARING

LEGS MADE OF HARDWOOD OR PLASTIC.

CUT AWAY

STEP TO ACCOMMODATE WIRE

NOT CORRECT POSITION

HARD WOOD BLOCK

SUITABLE GEARS TO MESH BETWEEN CENTRE SECTIONS REVOLVED BY ONE SCREW ONLY.

WING TIPS 1/8" Balsa HOLLOWED OUT FOR LIGHTNESS.

1/32 COVERING BEFORE LIGHTENING