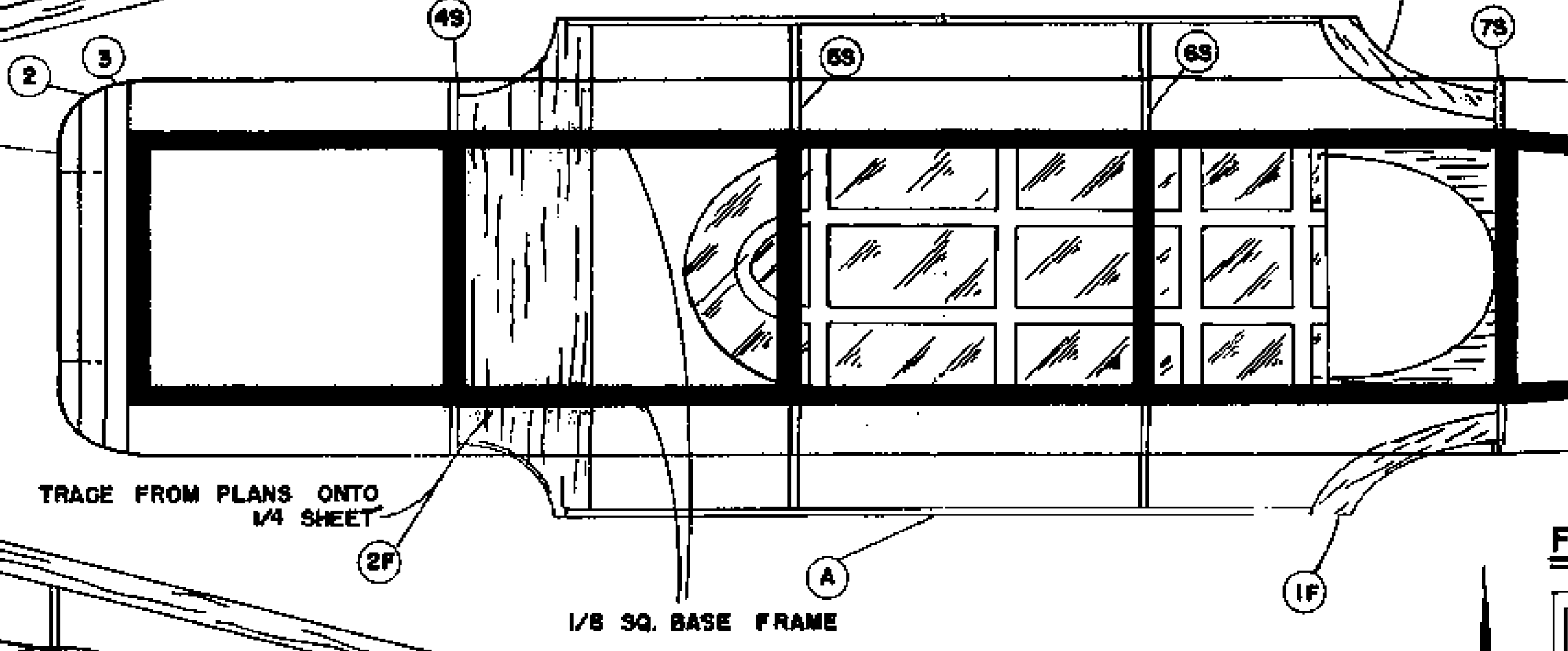
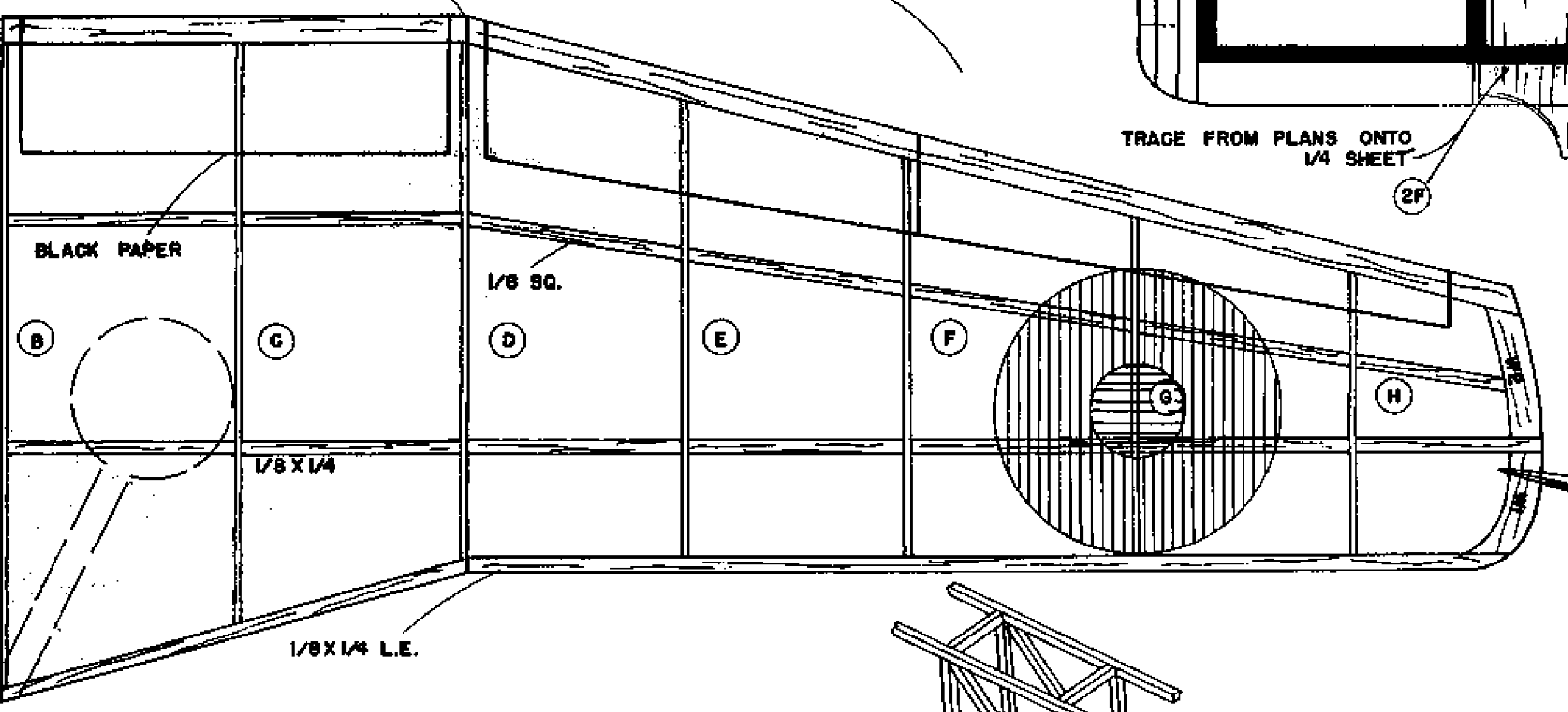
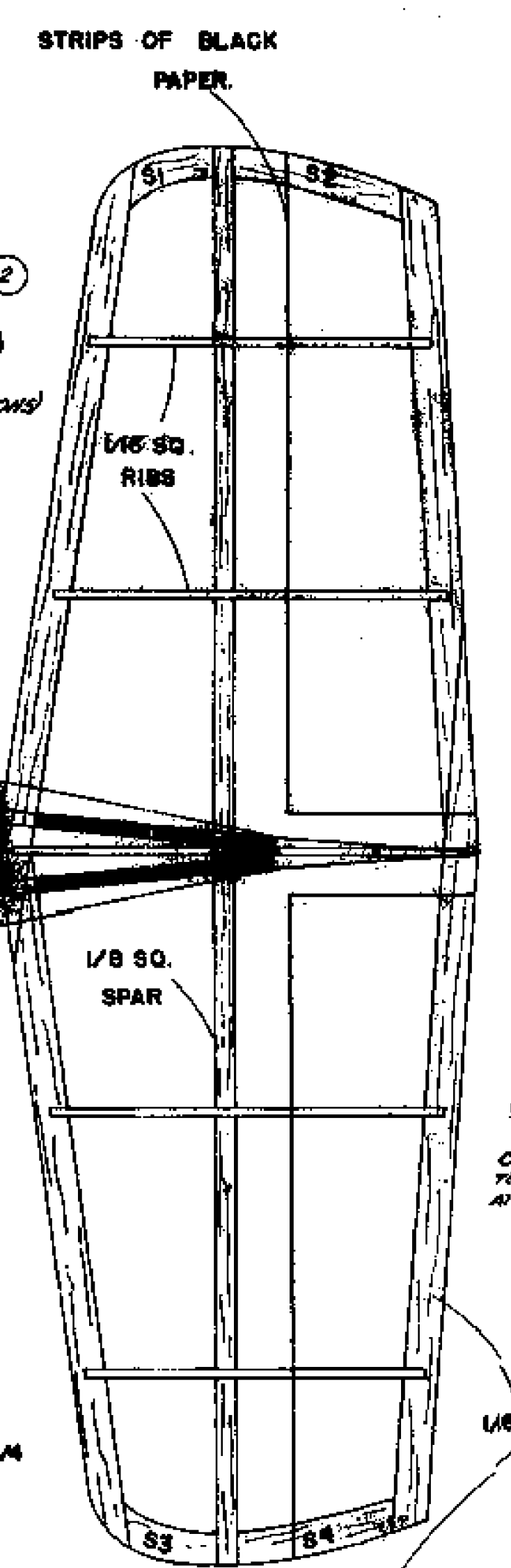
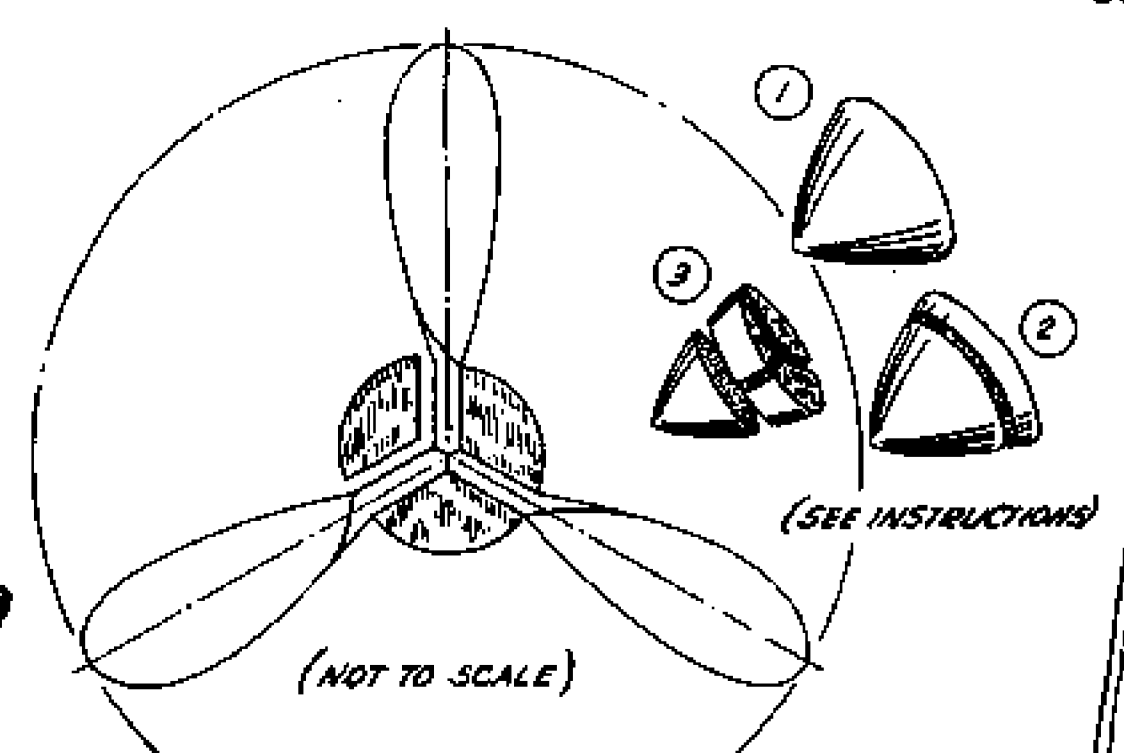
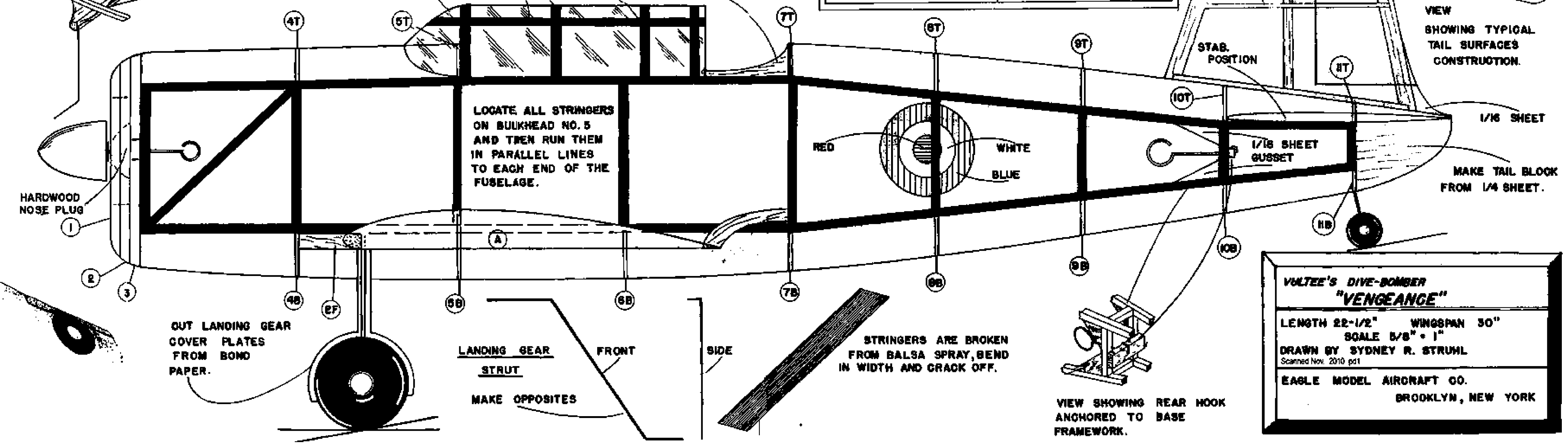
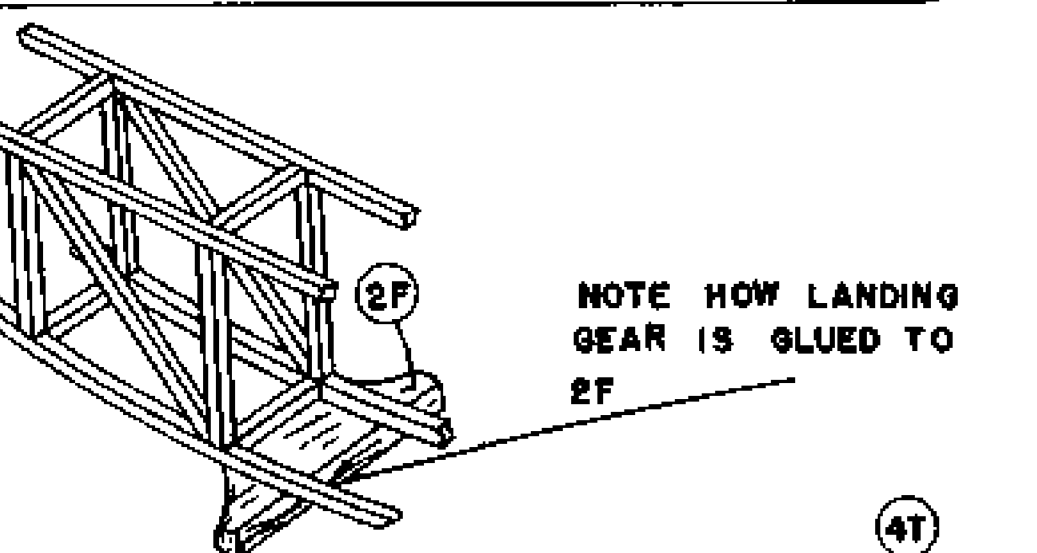
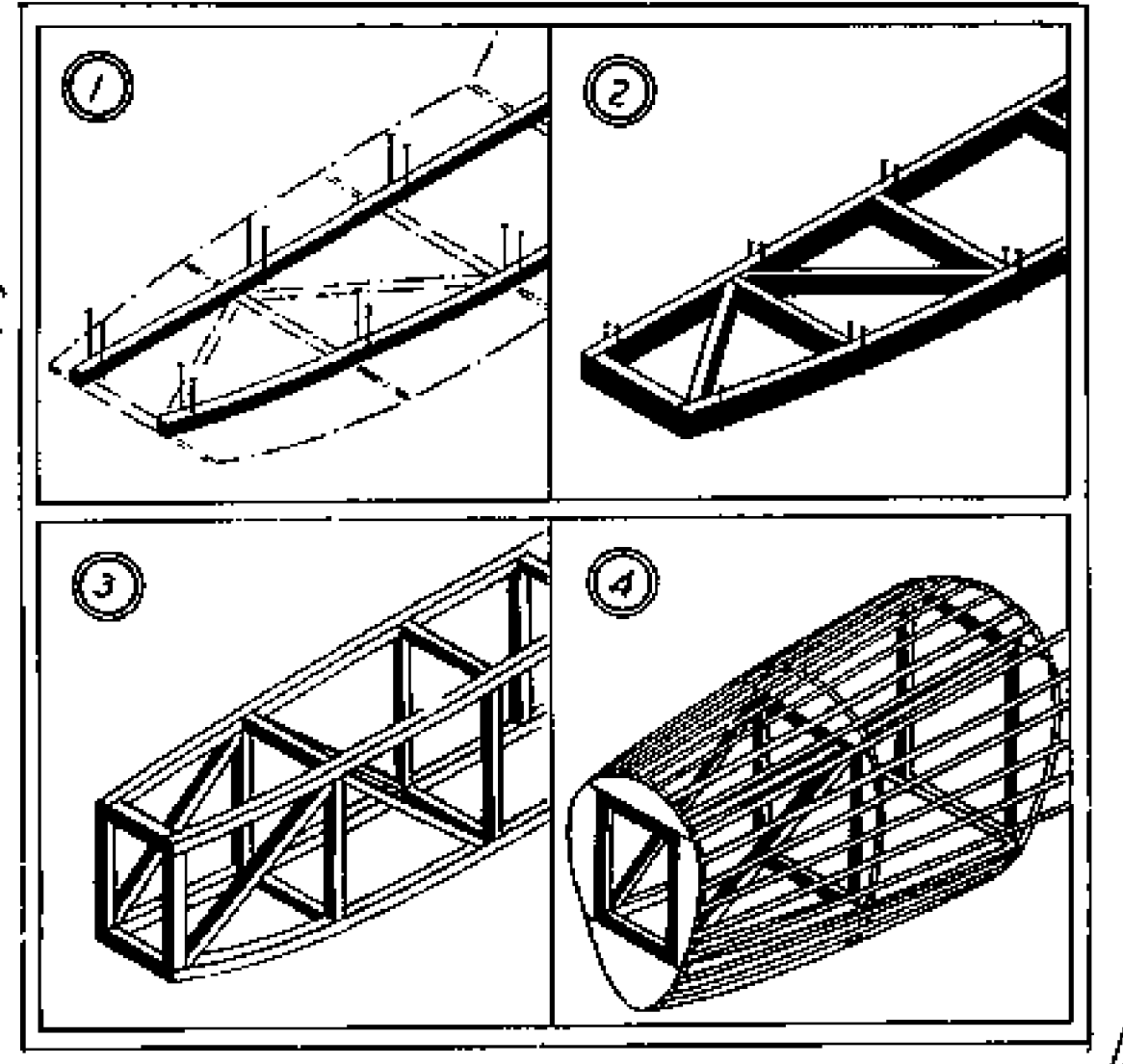


PROPELLER DETAIL



FUSELAGE CONSTRUCTION



BUILDING INSTRUCTIONS

Study the plan carefully before you start cutting the wood. After you have familiarized yourself with the construction and details, there will be less chance for errors. To prevent the wood from sticking to the plan, use wax paper.

Fuselage

First glue together the plan (Fig. 1) (marked in black). If strips are not long enough, splice them before gluing to plan. Next cut cross members to size (cut a set each) and start gluing them to topboard. Build other half on top to assure perfect alignment (Fig. 2) allow to dry. Now cut topboard members (a set each) and start gluing sides beginning at the nose and working back towards the tail post (Fig. 3). While glue flows to the base frame in positions marked on plan. Now start putting stringers on. First the top and bottom and next your work towards the center. If sections do not line up neatly cut another set of stringers which are set at line will show up but after the model is covered (Fig. 4).

Wing

Cut ribs and wing tips out and sand leading and trailing edges. Place wing spars on plan and glue the ribs in place then cement leading and trailing edges and wing tips.

Rudder & Stabilizer

Cut out rudder and glue sections together then bend 1/4 of rudder surface and cement to leading edge. After glue has set, sand to streamline shape.

Propeller

Cut propeller as indicated on plan (Fig. 5). The rear portion is divided into 3 segments (two degrees each) and is not (Fig. 6). Cut away thickness of propeller blades. Propeller blades are glued together and prop shaft is inserted. Now cement the segments between blades then glue the front part of propeller to the rest of the assembly.

Covering

Each part to be covered before assembly. Use clear dope as an adhesive to apply tissue. Tissue to be applied as follows: in small sections not more than one former at a time. Tail and wing are covered by only applying dope on leading and trailing edges. After model is covered, spray lightly with water. When water dries it will stretch paper to a smooth surface.

Assembly

Glue stabilizer and rudder in place. Make sure they line up (see front view). Glue wing to center section and maintain the dihedral indicated. Now glue model and glue fuselage in place with cement.

VOLTZ'S DIVE-BOMBER "VENGEANCE"

LENGTH 22-1/2" WINGSPAN 30"
SCALE 5/8" = 1"
DRAWN BY SYDNEY R. STRUHL
Scanned Nov. 2010 p01
EAGLE MODEL AIRCRAFT CO.
BROOKLYN, NEW YORK

