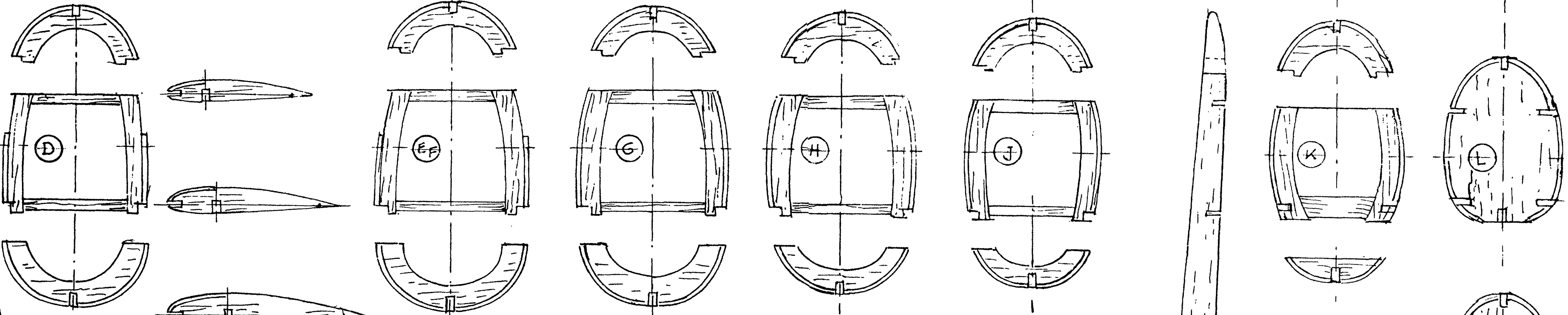
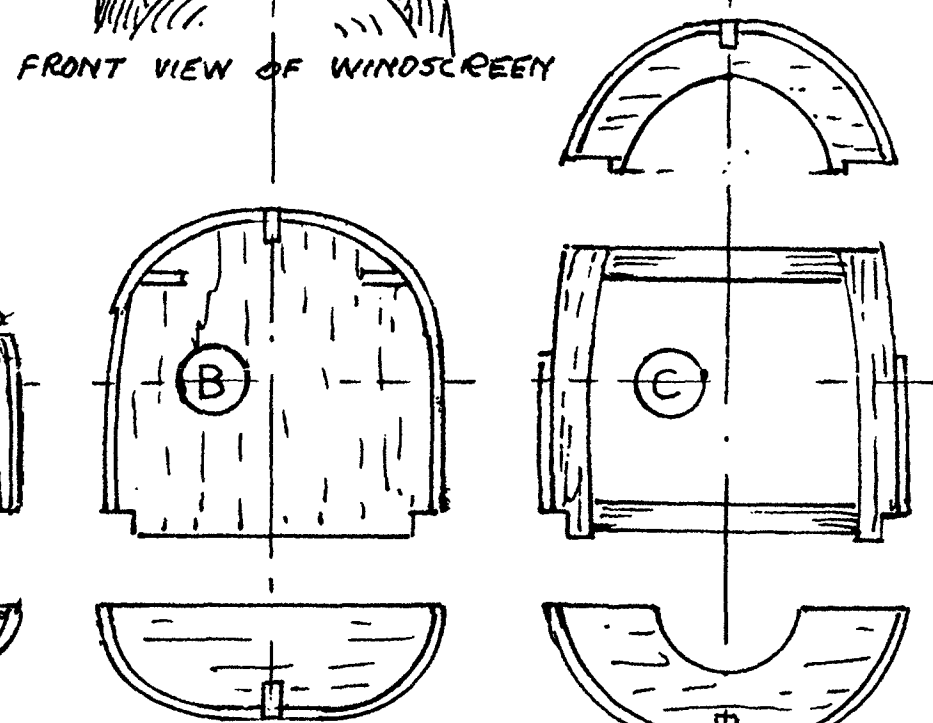
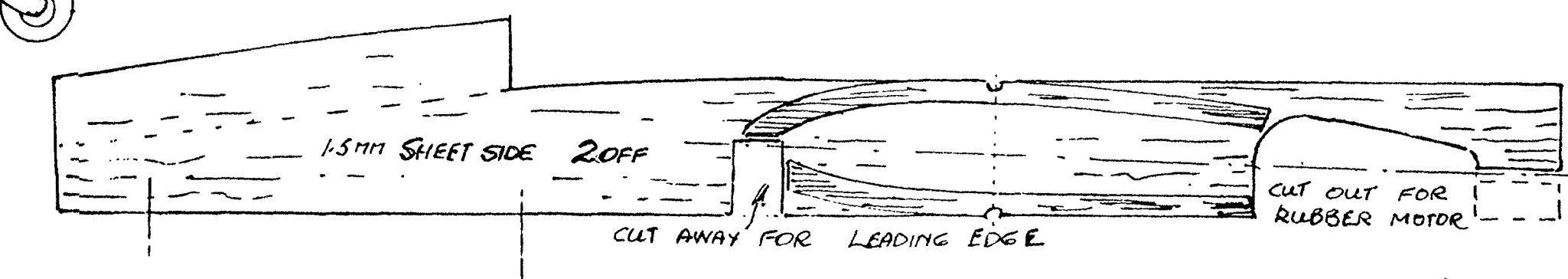
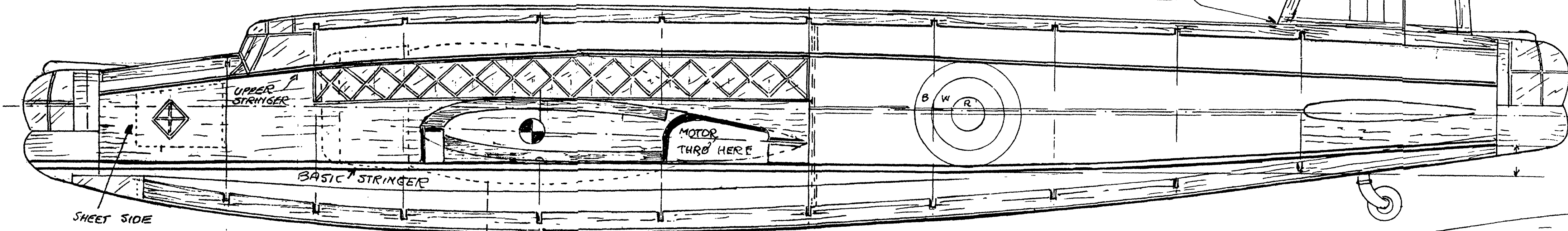


VICKERS-ARMSTRONG WELLINGTON I C

FLYING SCALE MODEL for RUBBER or POWER TWO .020 MOTORS

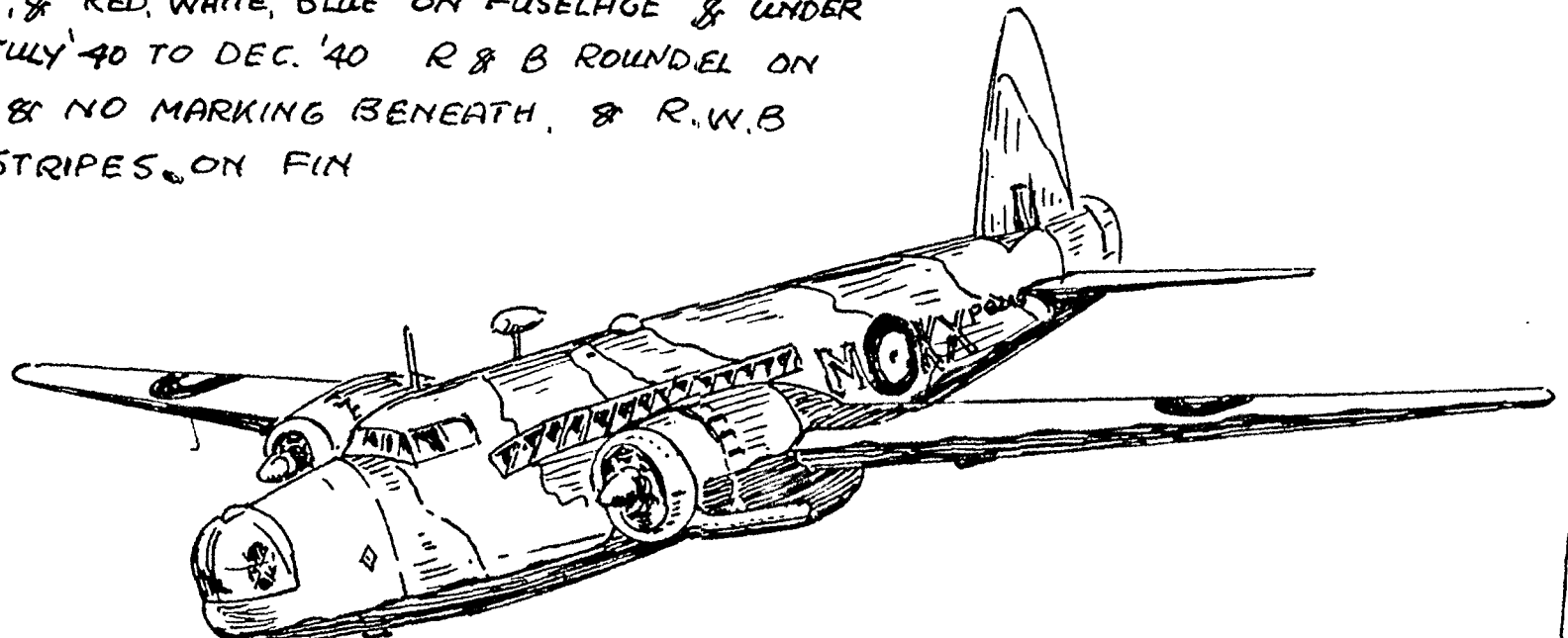
Designed and Drawn by Harold J. Town.

WELLINGTON I.C. HEAVY NIGHT BOMBER AND ANTI-SUBMARINE PATROL BOMBER, BUILT TO SPECIFICATION B9/32. TORPEDO BOMBER IN THE MEDITERRANEAN THEATRE. CREW OF SIX BUILT TO WALLIS GEODETIC SYSTEM, POWERED BY TWO BRISTOL PEGASUS XVIII AIR COOLER RADIAL MOTORS, 1000HP AT 2600 REVS AT 3000 FT. TWIN .303 M.G.S IN NASH & THOMPSON POWER DRIVEN TURRETS IN NOSE & TAIL & ONE .303 M.G. FIRING THROUGH EACH SIDE WINDOW AMIDSHIPS. BOMB LOAD OF 4500 LB. CARRIED IN BELLY. A TORPEDO COULD BE CARRIED IN LIEU OF BOMBS ON MODIFIED CRAFT.



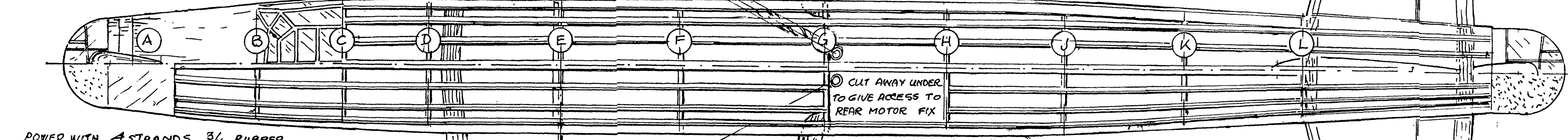
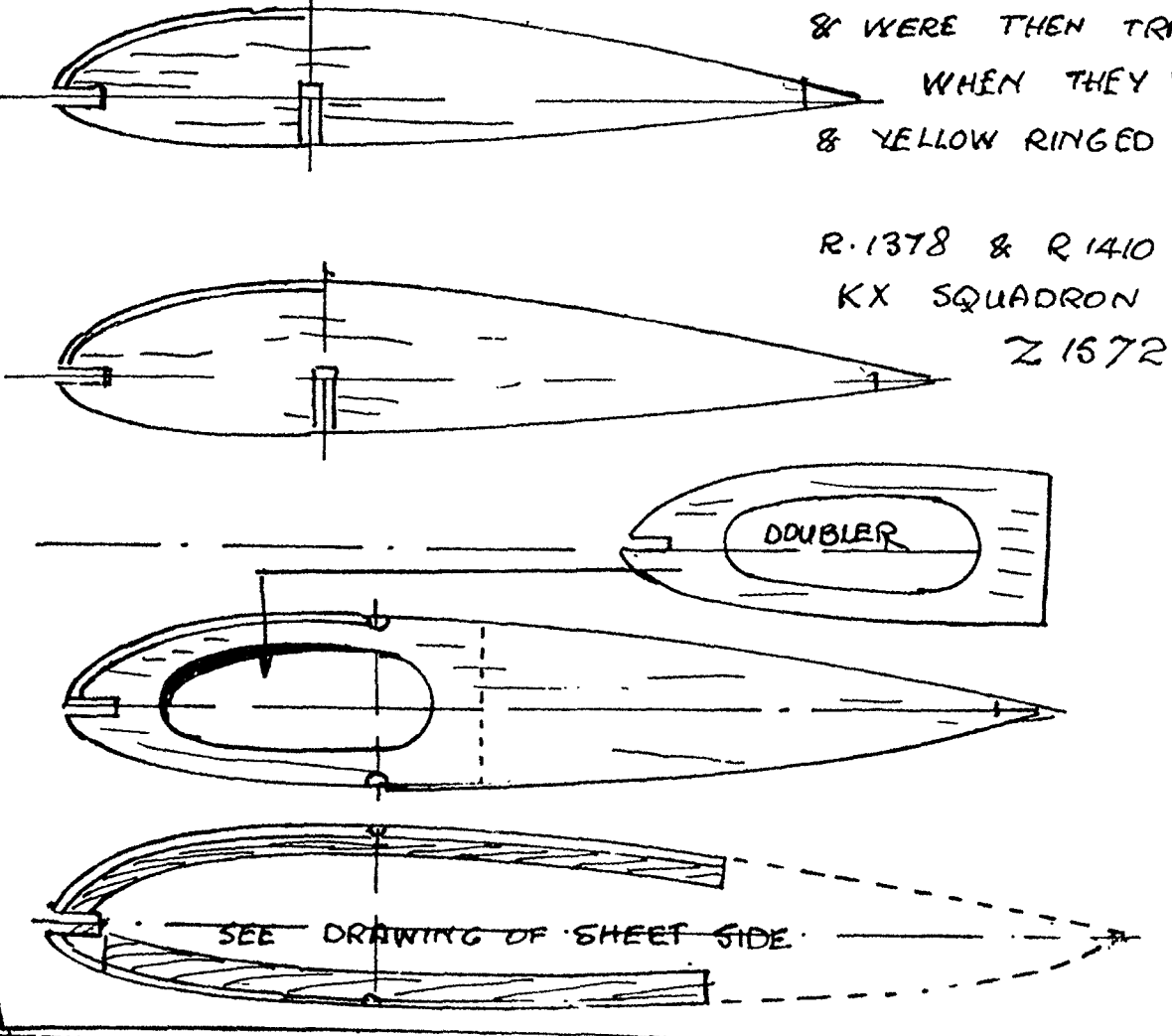
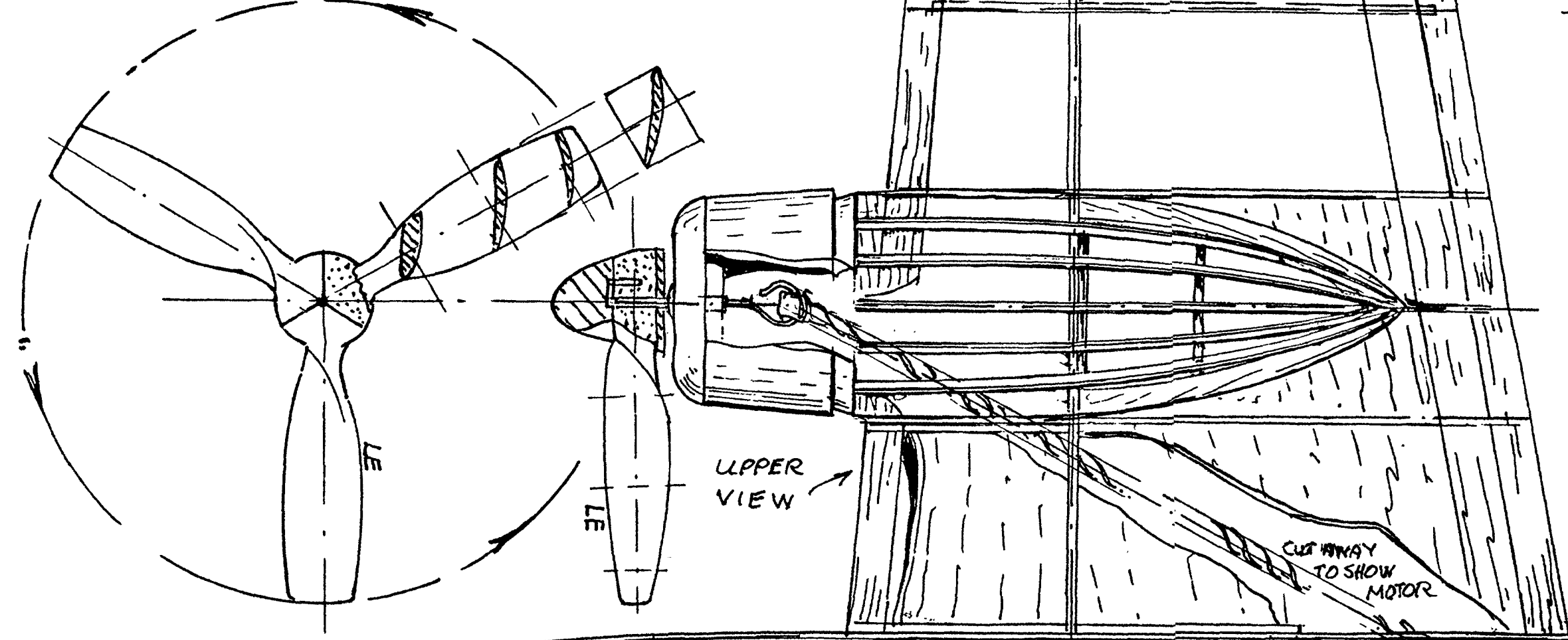
CONSTRUCTION:- THE CENTRE PARTS OF FORMERS ARE SET UP VERTICALLY ON THE TWO BASIC STRINGERS WHICH ARE PINNED DOWN TO BUILDING BOARD & THE REAR ENDS SUPPORTED TO TO ACHIEVE CURVE
THE TWO UPPER FULL LENGTH STRINGERS ARE FIXED IN PLACE & THE TOPS OF THE FORMERS ADDED.
THE WING SPARS ARE NOW FIXED IN PLACE & THESE, TOGETHER WITH THE UPPER PORTIONS OF NACELLES & WING OUTLINE, THEN THE RIBS.
THIS SYSTEM ENSURES A TRUE LINEUP.
THE MODEL IS REMOVED FROM THE BOARD & THE LOWER PARTS FITTED
WHERE A DOUBLE OUTLINE IS SHOWN, THE INNER REPRESENTS THAT OF THE FORMER, & THE OUTER, THE FINISHED SHAPE. EITHER 1.5x2.0 MM STRINGERS FOR RUBBER OR 1.5MM SHEET PLANKING FOR POWER
NOTE- STRINGERS ARE CEMENTED DIRECT TO FORMERS TO ELIMINATE NOTCHES, BUT MUST FLOW EVENLY.

COLOUR SCHEMES:- FOR HEAVY BOMBER, SHADON SHADING, DARK GREEN & DARK EARTH UPPER SURFACES & NIGHT BLACK UNDER. FROM SEPT '39 - JULY '40 RED & BLUE ROUNDELS ABOVE WINGS, & RED, WHITE, BLUE ON FUSELAGE & UNDER WINGS. JULY '40 TO DEC. '40 R & B ROUNDEL ON FUSELAGE & NO MARKING BENEATH, & R.W.B VERTICAL STRIPES ON FIN

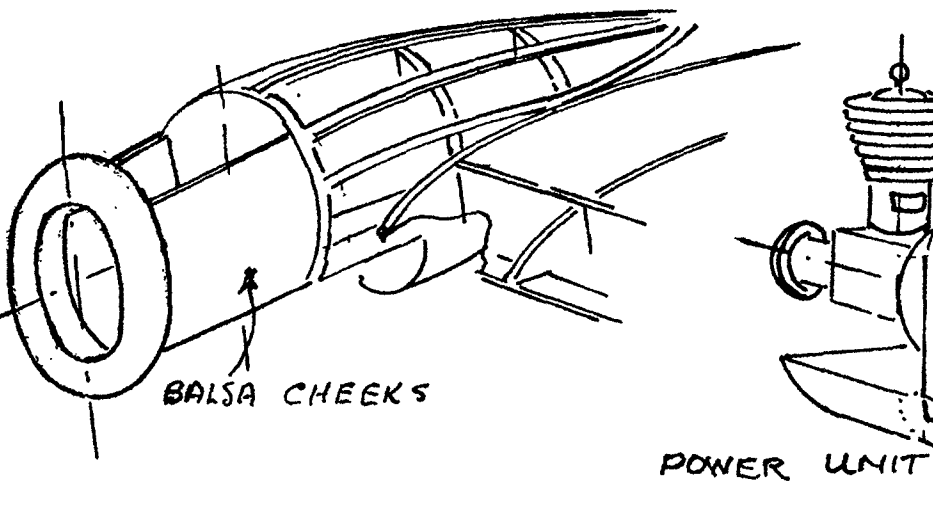
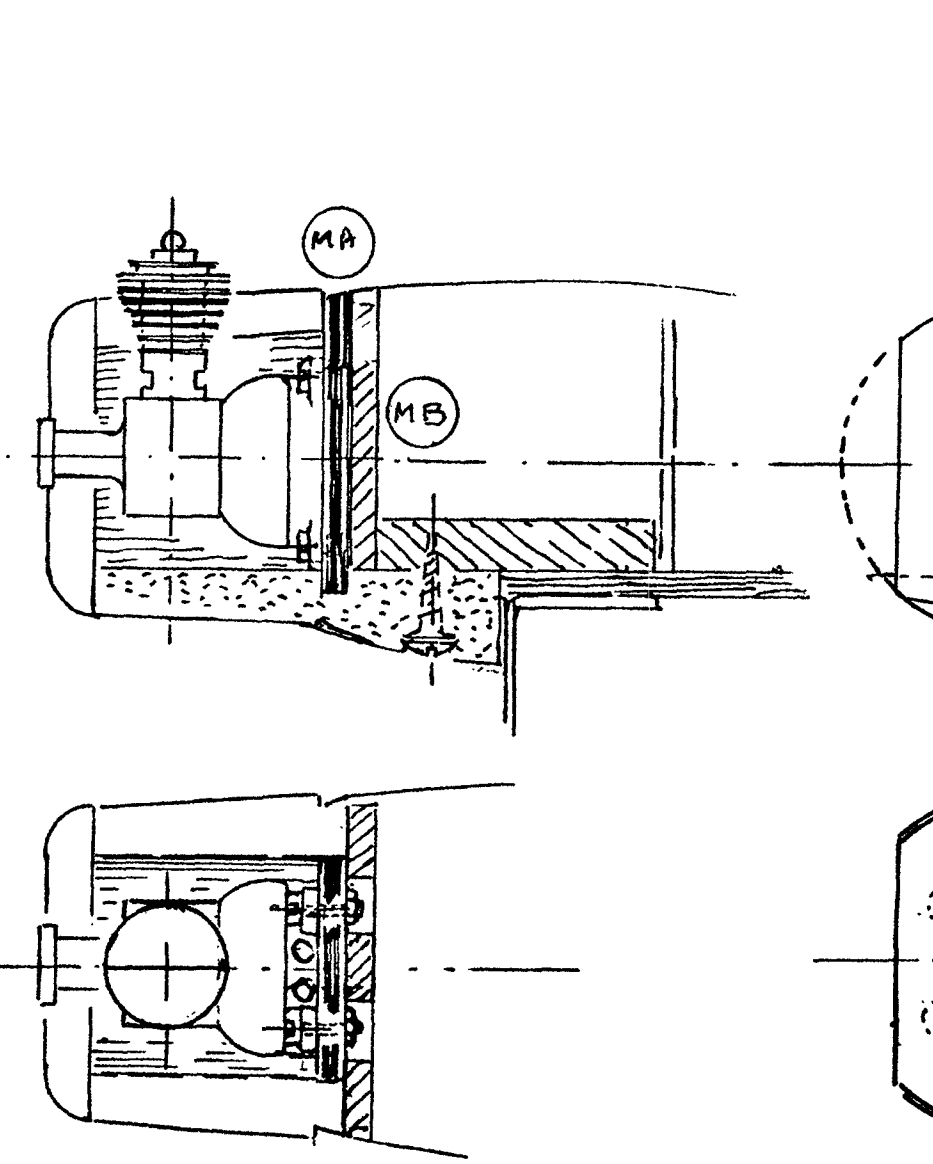
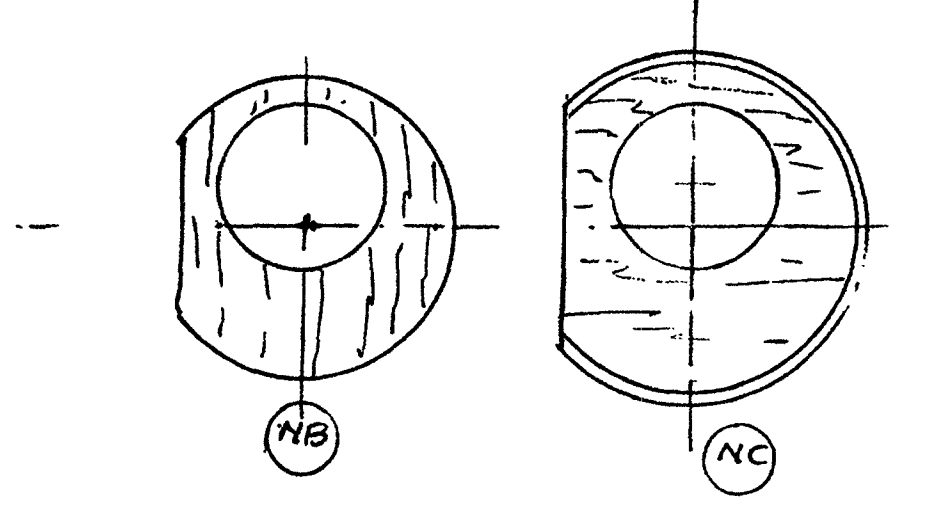


IN 1941 MOST WELLINGTON I.CS WERE REPLACED BY LATER WELLINGTONS OR FOUR ENGINE BOMBERS & WERE THEN TRANSFERRED TO COASTAL COMMAND WHEN THEY WORE DUCKEGG BLUE UNDER & YELLOW RINGED FUSELAGE ROUNDELS

R.1378 & R.1410 BOTH WENT TO KX SQUADRON & QVR BECAME Z 1572.



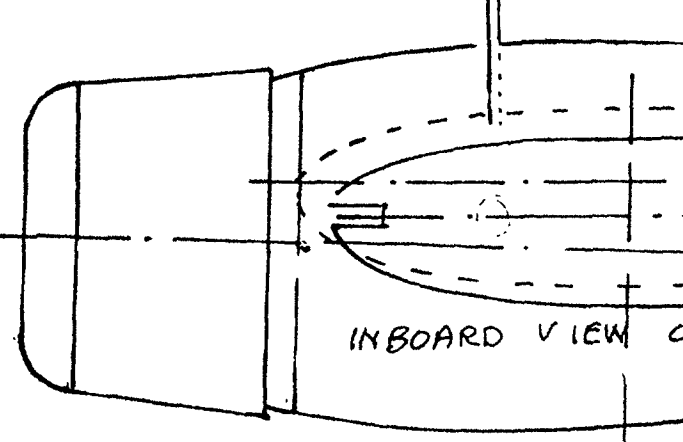
POWER WITH 4 STRANDS 3/4 RUBBER PER MOTOR 12" LONG, PREWIND TO TAKE UP SLACK - 500 TURNS, MAX IF IN GOOD CONDITION



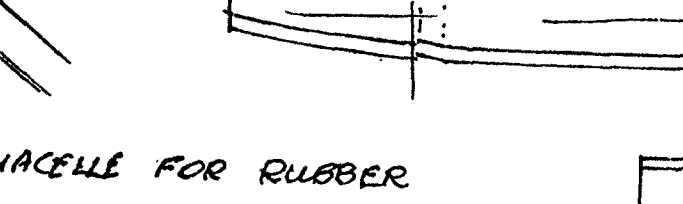
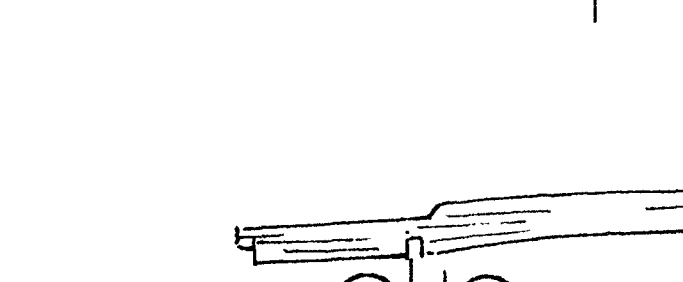
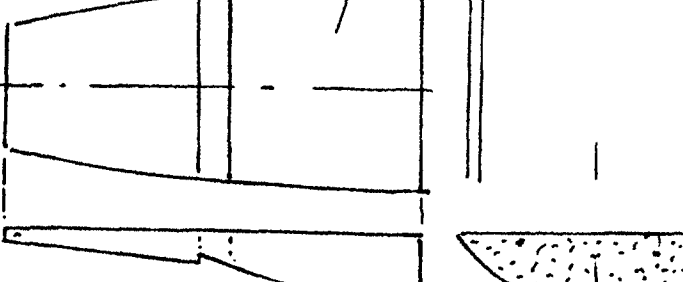
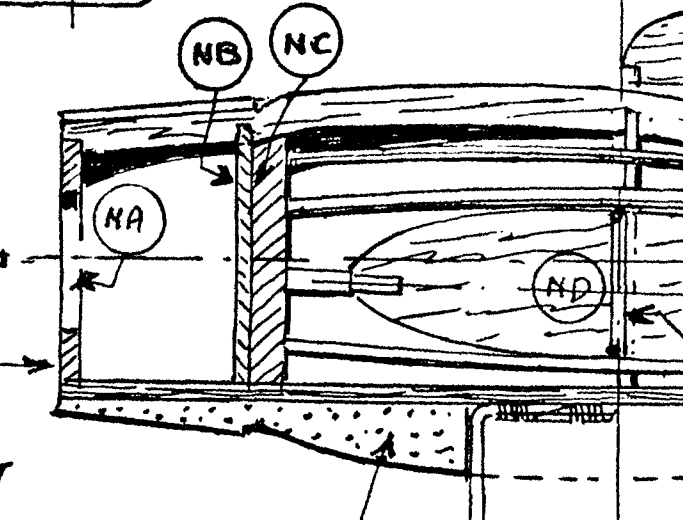
POWER UNIT SLIDES UP BETWEEN BALSA CHECKS & IS RETAINED BY SCREW INTO NACELLE POWER BASE

FOR POWER MODELS IGNORE ALL CUTOUTS ETC. FOR RUBBER, OR FILL-IN.

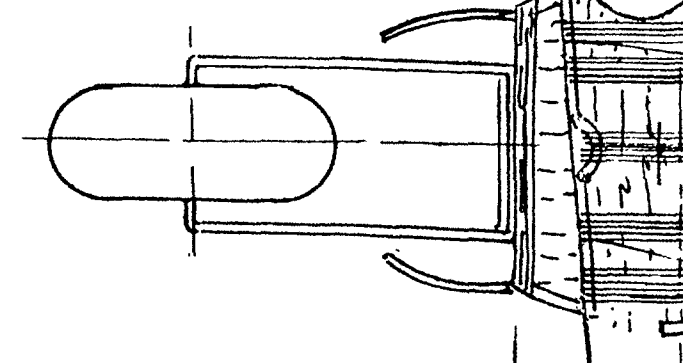
MOTOR FIX COMPRISES DOWEL IN PAPER TUBE ONE PER MOTOR



ALL MATERIAL 1.5MM UNLESS OTHERWISE STATED



16G WIRE BOUND & GLUED TO CENTRE SECTION & THE TWO NACELLES



UPPER STRINGER 2OFF

MAIN SPAR 2.5MM HARD BALSA

WHEEL REVOLVES ABOUT BRASS TUBE

ELEVATOR RIBS

LEGS MOUNTED ON WOOD BLOCK & BOUND & GLUED & CEMENTED NACELLE BASE

NOTE POSITION OF MC FOR POWER MODEL

NACELLE MAIN FORMER 2OFF FOR RUBBER

SKETCH SHOWING WHEEL DOORS OPEN MAKE OF THIN CARD

NACELLE BASE FOR RUBBER

NACELLE BASE FOR POWER

METHOD OF NOTCHING NACELLE STRINGERS & THEN CEMENT NOTCHED SURFACE TO STRENGTHEN